

## Product datasheet for **TA321300S**

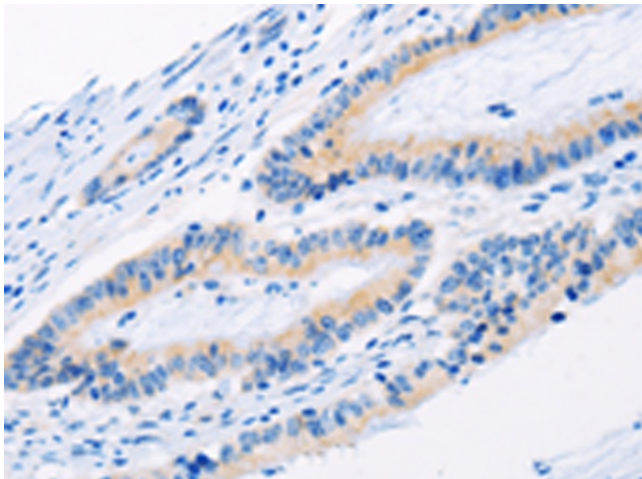
### **BMP3 Rabbit Polyclonal Antibody**

#### **Product data:**

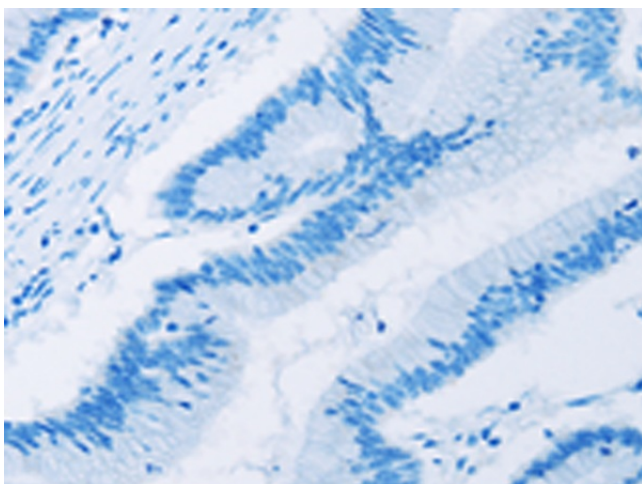
<b>Product Type:</b>	Primary Antibodies
<b>Applications:</b>	IHC
<b>Recommended Dilution:</b>	IHC: 15-50 Positive control: Human colon cancer Predicted cell location: Cytoplasm
<b>Reactivity:</b>	Human, Mouse, Rat
<b>Host:</b>	Rabbit
<b>Isotype:</b>	IgG
<b>Clonality:</b>	Polyclonal
<b>Immunogen:</b>	Fusion protein corresponding to a region derived from 363-472 amino acids of human bone morphogenetic protein 3
<b>Formulation:</b>	PBS pH7.3, 0.05% NaN <sub>3</sub> , 50% glycerol
<b>Purification:</b>	Antigen affinity purification
<b>Conjugation:</b>	Unconjugated
<b>Storage:</b>	Store at -20°C as received.
<b>Stability:</b>	Stable for 12 months from date of receipt.
<b>Gene Name:</b>	bone morphogenetic protein 3
<b>Database Link:</b>	<a href="#">NP_001192</a> <a href="#">Entrez Gene 25667 Rat</a> <a href="#">Entrez Gene 110075 Mouse</a> <a href="#">Entrez Gene 651 Human</a> <a href="#">P12645</a>
<b>Background:</b>	BMP3 belongs to the transforming growth factor-beta (TGFB) superfamily. Bone morphogenic protein, also known as osteogenin, induces bone formation. Negatively regulates bone density. Antagonizes the ability of certain osteogenic BMPs to induce osteoprogenitor differentiation and ossification. Expressed in adult and fetal cartilage. Highly expressed in fracture tissue, particularly in osteoblasts, osteoclasts and chondroblasts.
<b>Synonyms:</b>	BMP-3A
<b>Protein Families:</b>	Druggable Genome, Secreted Protein



[View online »](#)

**Product images:**

Immunohistochemistry of paraffin-embedded Human colon cancer tissue using [TA321300] (BMP3 Antibody) at dilution 1/30 (Original magnification:  $\times 200$ )



Immunohistochemistry of paraffin-embedded Human colon cancer tissue using [TA321300] (BMP3 Antibody) at dilution 1/30, treated with fusion protein. (Original magnification:  $\times 200$ )