

## Product datasheet for **TA321299S**

### Bak (BAK1) Rabbit Polyclonal Antibody

#### Product data:

Product Type:	Primary Antibodies
Applications:	IHC, WB
Recommended Dilution:	WB: 1000-5000 WB positive control: Hela, A431, 293T and Jurkat cells IHC: 50-200 Positive control: Human esophagus cancer Predicted cell location: Cytoplasm
Reactivity:	Human
Host:	Rabbit
Isotype:	IgG
Clonality:	Polyclonal
Immunogen:	Fusion protein corresponding to a region derived from 4-187 amino acids of human BCL2-antagonist/killer 1
Formulation:	PBS pH7.3, 0.05% NaN <sub>3</sub> , 50% glycerol
Purification:	Antigen affinity purification
Conjugation:	Unconjugated
Storage:	Store at -20°C as received.
Stability:	Stable for 12 months from date of receipt.
Predicted Protein Size:	23 kDa
Gene Name:	BCL2 antagonist/killer 1
Database Link:	<a href="#">NP_001179</a> <a href="#">Entrez Gene 578 Human</a> <a href="#">Q16611</a>



[View online »](#)

**Background:**

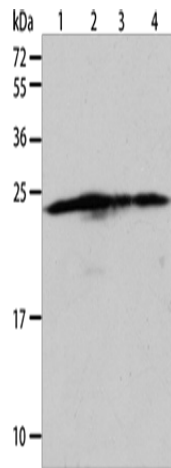
The protein encoded by this gene belongs to the BCL2 protein family. BCL2 family members form oligomers or heterodimers and act as anti- or pro-apoptotic regulators that are involved in a wide variety of cellular activities. This protein localizes to mitochondria, and functions to induce apoptosis. It interacts with and accelerates the opening of the mitochondrial voltage-dependent anion channel, which leads to a loss in membrane potential and the release of cytochrome c. This protein also interacts with the tumor suppressor P53 after exposure to cell stress.?

**Synonyms:**

BAK; BAK-LIKE; BCL2L7; CDN1

**Protein Families:**

Druggable Genome, Stem cell - Pluripotency, Transmembrane

**Product images:**


Gel: 12%SDS-PAGE

Lysate: 40  $\mu$ g

Lane 1-4: HeLa cells

A431 cells

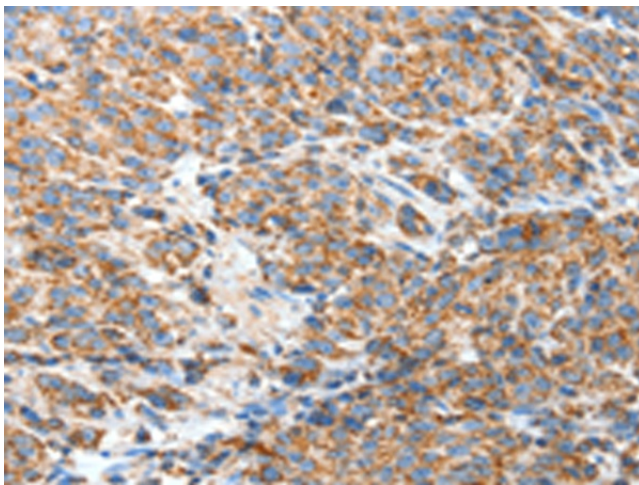
293T cells

Jurkat cells

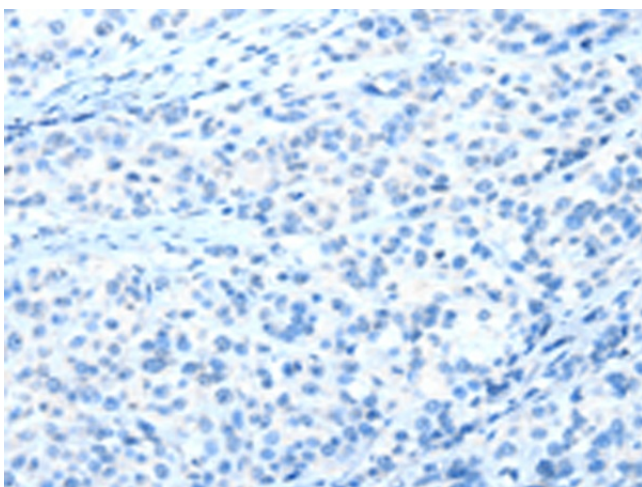
Primary antibody: [TA321299] (BAK1 Antibody) at dilution 1/900

Secondary antibody: Goat anti rabbit IgG at 1/8000 dilution

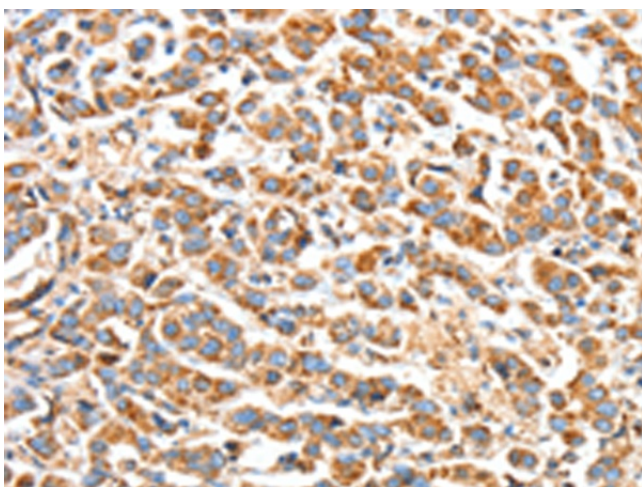
Exposure time: 5 seconds



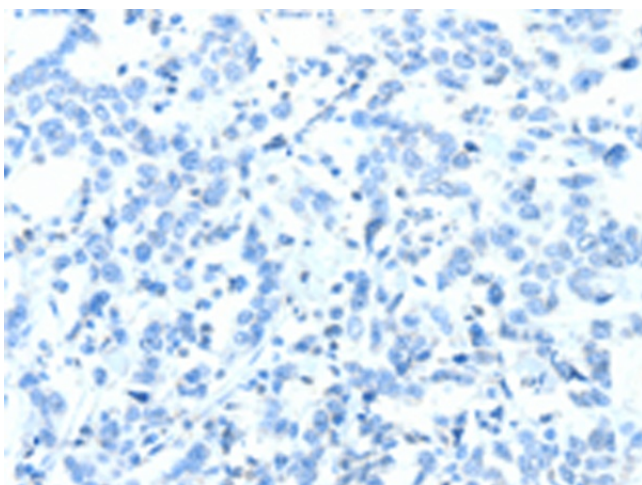
Immunohistochemistry of paraffin-embedded Human esophagus cancer tissue using [TA321299] (BAK1 Antibody) at dilution 1/50 (Original magnification:  $\times$ 200)



Immunohistochemistry of paraffin-embedded Human esophagus cancer tissue using [TA321299] (BAK1 Antibody) at dilution 1/50, treated with fusion protein. (Original magnification:  $\times 200$ )



Immunohistochemistry of paraffin-embedded Human breast cancer tissue using [TA321299] (BAK1 Antibody) at dilution 1/50 (Original magnification:  $\times 200$ )



Immunohistochemistry of paraffin-embedded Human breast cancer tissue using [TA321299] (BAK1 Antibody) at dilution 1/50, treated with fusion protein. (Original magnification:  $\times 200$ )