

Product datasheet for **TA321292S**

Annexin VII (ANXA7) Rabbit Polyclonal Antibody

Product data:

Product Type:	Primary Antibodies
Applications:	IHC
Recommended Dilution:	IHC: 50-200 Positive control: Human lung cancer Predicted cell location: Cytoplasm, Cell membrane
Reactivity:	Human, Mouse
Host:	Rabbit
Isotype:	IgG
Clonality:	Polyclonal
Immunogen:	Fusion protein corresponding to C terminal 232 amino acids of Human Annexin A7
Formulation:	PBS pH7.3, 0.05% NaN ₃ , 50% glycerol
Purification:	Antigen affinity purification
Conjugation:	Unconjugated
Storage:	Store at -20°C as received.
Stability:	Stable for 12 months from date of receipt.
Gene Name:	annexin A7
Database Link:	NP_001147 Entrez Gene 11750 Mouse Entrez Gene 310 Human P20073



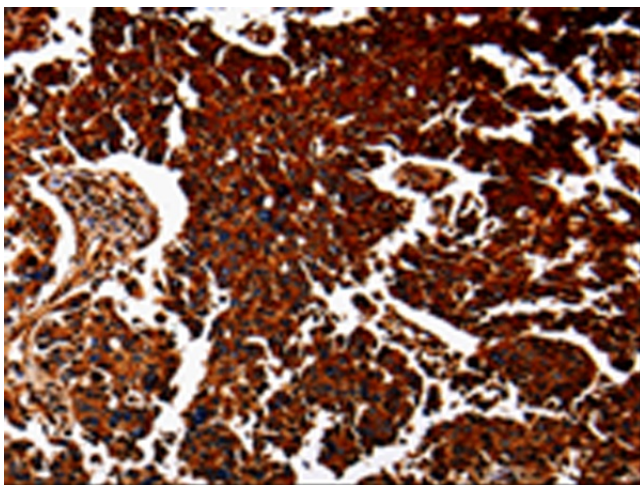
[View online »](#)

Background:

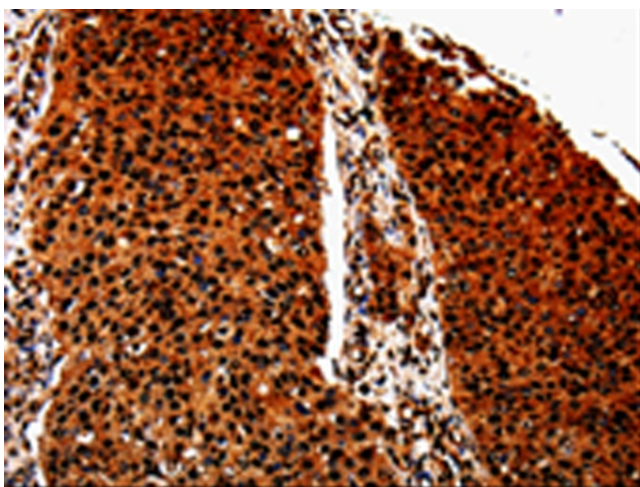
Annexin VII is a member of the annexin family of calcium-dependent phospholipid binding proteins. The Annexin VII gene contains 14 exons and spans approximately 34 kb of DNA. An alternatively spliced cassette exon results in two mRNA transcripts of 2.0 and 2.4 kb which are predicted to generate two protein isoforms differing in their N-terminal domain. The alternative splicing event is tissue specific and the mRNA containing the cassette exon is prevalent in brain; heart and skeletal muscle. The transcripts also differ in their 3'-non coding regions by the use of two alternative poly(A) signals. Annexin VII encodes a protein with a molecular weight of approximately 51 kDa with a unique; highly hydrophobic N-terminal domain of 167 amino acids and a conserved C-terminal region of 299 amino acids. The latter domain is composed of alternating hydrophobic and hydrophilic segments. Structural analysis of the protein suggests that Annexin VII is a membrane binding protein with diverse properties; including voltage-sensitive calcium channel activity; ion selectivity and membrane fusion.

Synonyms:

ANX7; SNX; SYNEXIN

Product images:

Immunohistochemistry of paraffin-embedded Human lung cancer tissue using [TA321292] (ANXA7 Antibody) at dilution 1/40. (Original magnification: ×200)



Immunohistochemistry of paraffin-embedded Human renal cancer tissue using [TA321292] (ANXA7 Antibody) at dilution 1/40. (Original magnification: $\times 200$)