

## Product datasheet for **TA321291S**

### Annexin VI (ANXA6) Rabbit Polyclonal Antibody

#### Product data:

Product Type:	Primary Antibodies
Applications:	IHC, WB
Recommended Dilution:	WB: 200-500 WB positive control: Mouse kidney tissue IHC: 25-100 Positive control: Human esophagus cancer Predicted cell location: Cytoplasm, Cell membrane
Reactivity:	Human, Mouse, Rat
Host:	Rabbit
Isotype:	IgG
Clonality:	Polyclonal
Immunogen:	Fusion protein corresponding to C terminal 350 amino acids of human annexin A6
Formulation:	PBS pH7.3, 0.05% NaN <sub>3</sub> , 50% glycerol
Purification:	Antigen affinity purification
Conjugation:	Unconjugated
Storage:	Store at -20°C as received.
Stability:	Stable for 12 months from date of receipt.
Predicted Protein Size:	76 kDa
Gene Name:	annexin A6
Database Link:	<a href="#">NP_001146</a> <a href="#">Entrez Gene 11749 MouseEntrez Gene 79125 RatEntrez Gene 309 Human P08133</a>



[View online »](#)

**Background:**

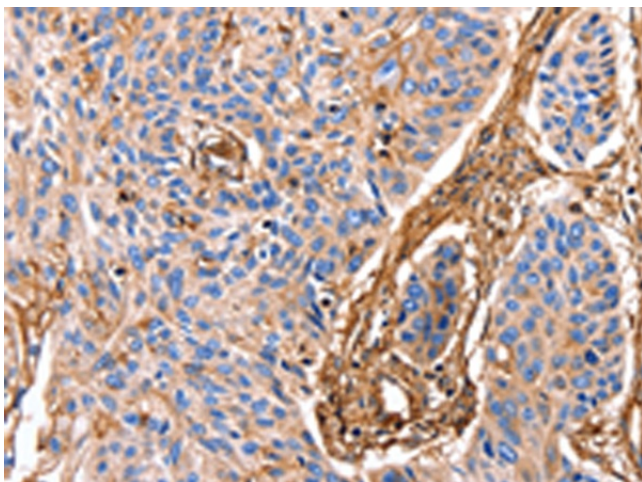
Annexin VI belongs to a family of calcium-dependent membrane and phospholipid binding proteins. Several members of the annexin family have been implicated in membrane-related events along exocytotic and endocytotic pathways. The annexin VI gene is approximately 60 kbp long and contains 26 exons. It encodes a protein of about 68 kDa that consists of eight 68-amino acid repeats separated by linking sequences of variable lengths. It is highly similar to human annexins I and II sequences; each of which contain four such repeats. Annexin VI has been implicated in mediating the endosome aggregation and vesicle fusion in secreting epithelia during exocytosis. Alternatively spliced transcript variants have been described.

**Synonyms:**

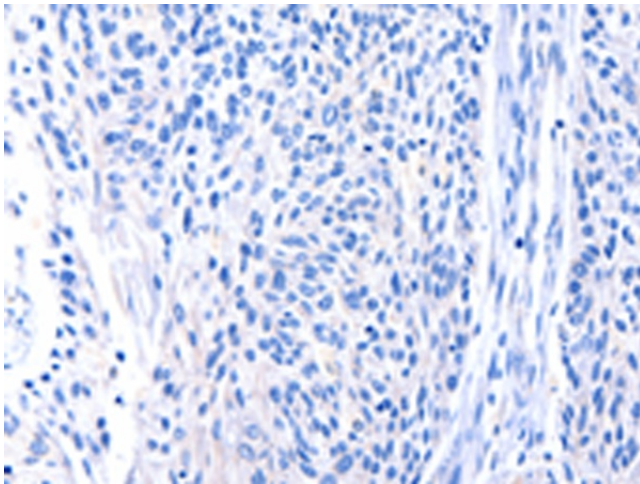
ANX6; CBP68

**Product images:**

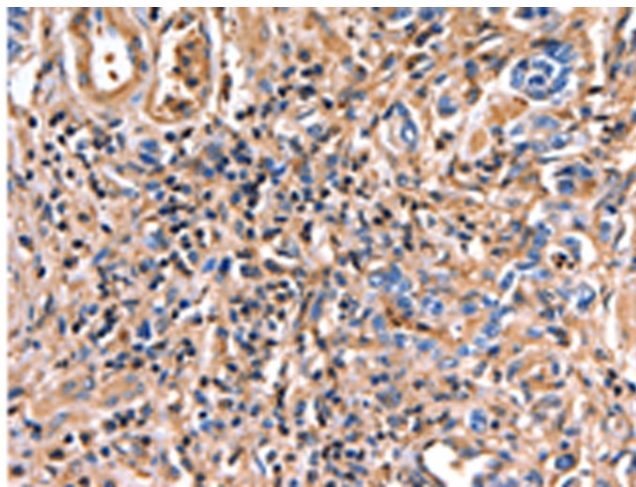
Gel: 10%SDS-PAGE  
Lysate: 30  $\mu$ g  
Lane: Mouse kidney tissue  
Primary antibody: [TA321291] (ANXA6 Antibody) at dilution 1/350  
Secondary antibody: Goat anti rabbit IgG at 1/8000 dilution  
Exposure time: 10 seconds



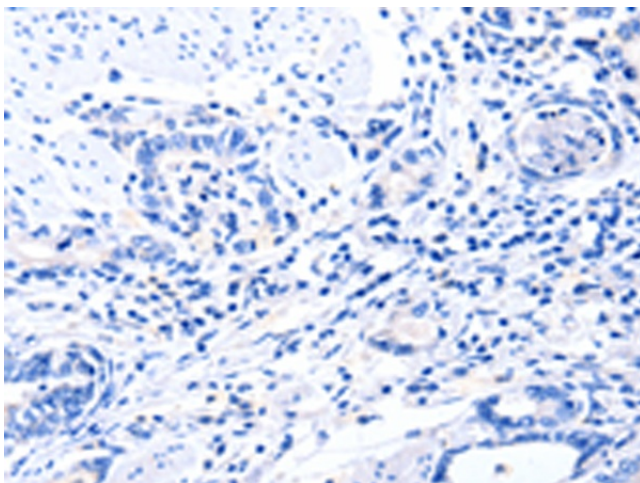
Immunohistochemistry of paraffin-embedded Human esophagus cancer tissue using [TA321291] (ANXA6 Antibody) at dilution 1/17 (Original magnification:  $\times$ 200)



Immunohistochemistry of paraffin-embedded Human esophagus cancer tissue using [TA321291] (ANXA6 Antibody) at dilution 1/17, treated with fusion protein. (Original magnification: ×200)



Immunohistochemistry of paraffin-embedded Human gastric cancer tissue using [TA321291] (ANXA6 Antibody) at dilution 1/17 (Original magnification: ×200)



Immunohistochemistry of paraffin-embedded Human gastric cancer tissue using [TA321291] (ANXA6 Antibody) at dilution 1/17, treated with fusion protein. (Original magnification: ×200)