

## Product datasheet for **TA321288**

### Annexin V (ANXA5) Rabbit Polyclonal Antibody

#### Product data:

Product Type:	Primary Antibodies
Applications:	IHC, WB
Recommended Dilution:	WB: 500-2000 WB positive control: Mouse eyes and heart, Human cervical cancer tissue, OP9 and RAW264.7 cells IHC: 50-200 Positive control: Human colon cancer Predicted cell location: Cytoplasm
Reactivity:	Human, Mouse, Rat
Host:	Rabbit
Isotype:	IgG
Clonality:	Polyclonal
Immunogen:	Fusion protein corresponding to a region derived from 49-263 amino acids of human annexin A5
Formulation:	PBS pH7.3, 0.05% NaN <sub>3</sub> , 50% glycerol
Concentration:	lot specific
Purification:	Antigen affinity purification
Conjugation:	Unconjugated
Storage:	Store at -20°C as received.
Stability:	Stable for 12 months from date of receipt.
Predicted Protein Size:	36 kDa
Gene Name:	annexin A5
Database Link:	<a href="#">NP_001145</a> <a href="#">Entrez Gene 11747 Mouse</a> <a href="#">Entrez Gene 25673 Rat</a> <a href="#">Entrez Gene 308 Human</a> <a href="#">P08758</a>



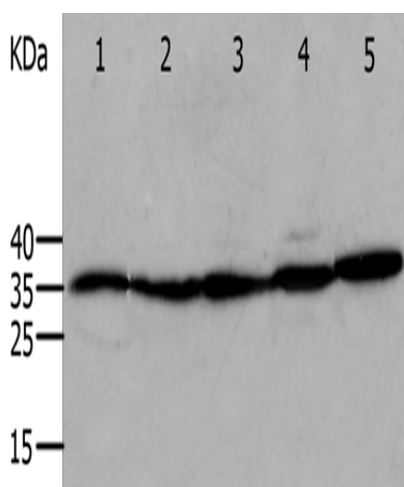
[View online »](#)

**Background:**

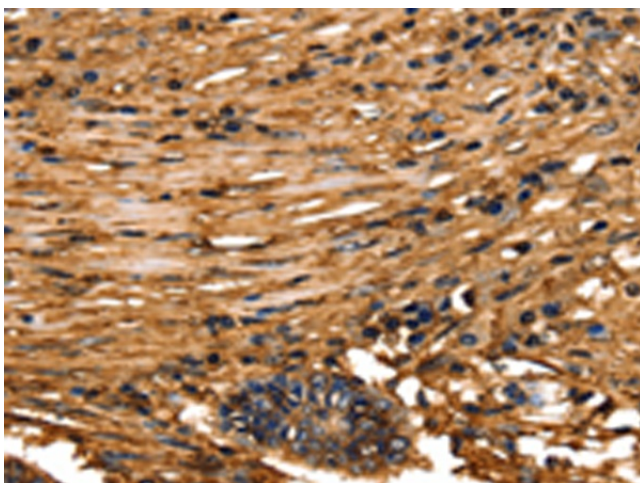
The protein encoded by this gene belongs to the annexin family of calcium-dependent phospholipid binding proteins some of which have been implicated in membrane-related events along exocytotic and endocytotic pathways. Annexin 5 is a phospholipase A2 and protein kinase C inhibitory protein with calcium channel activity and a potential role in cellular signal transduction; inflammation; growth and differentiation. Annexin 5 has also been described as placental anticoagulant protein I; vascular anticoagulant-alpha; endonexin II; lipocortin V; placental protein 4 and anchorin CII. The gene spans 29 kb containing 13 exons; and encodes a single transcript of approximately 1.6 kb and a protein product with a molecular weight of about 35 kDa.

**Synonyms:**

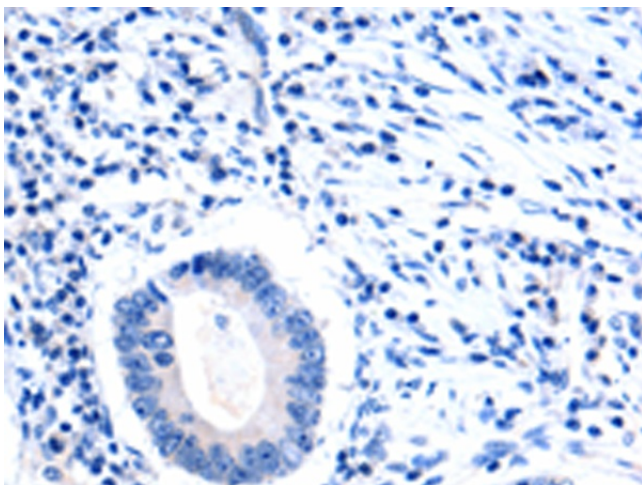
ANX5; ENX2; HEL-S-7; PP4; RPRGL3

**Product images:**


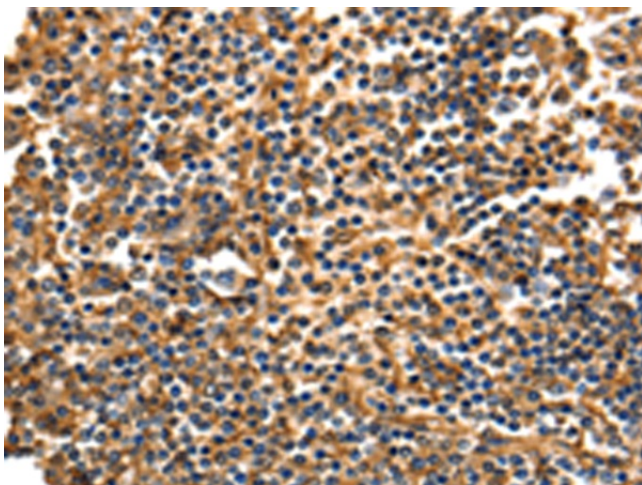
Gel: 12%SDS-PAGE  
 Lysate: 40  $\mu$ g  
 Lane 1-5: Mouse eyes tissue  
 Mouse heart tissue  
 Human cervical cancer tissue  
 OP9 cells  
 RAW264.7 cells  
 Primary antibody: TA321288 (ANXA5 Antibody) at dilution 1/750  
 Secondary antibody: Goat anti rabbit IgG at 1/8000 dilution  
 Exposure time: 1 minute



Immunohistochemistry of paraffin-embedded Human colon cancer tissue using TA321288 (ANXA5 Antibody) at dilution 1/40 (Original magnification:  $\times$ 200)



Immunohistochemistry of paraffin-embedded Human colon cancer tissue using TA321288 (ANXA5 Antibody) at dilution 1/40, treated with fusion protein. (Original magnification: ×200)



Immunohistochemistry of paraffin-embedded Human tonsil tissue using TA321288 (ANXA5 Antibody) at dilution 1/40 (Original magnification: ×200)



Immunohistochemistry of paraffin-embedded Human tonsil tissue using TA321288 (ANXA5 Antibody) at dilution 1/40, treated with fusion protein. (Original magnification: ×200)