

Product datasheet for **TA321287**

SLC25A4 Rabbit Polyclonal Antibody

Product data:

Product Type:	Primary Antibodies
Applications:	IHC, WB
Recommended Dilution:	WB: 500-2000 WB positive control: Human heart tissue lysate IHC: 25-50 Positive control: Human tonsil Predicted cell location: Cytoplasm
Reactivity:	Human, Mouse, Rat
Host:	Rabbit
Isotype:	IgG
Clonality:	Polyclonal
Immunogen:	Synthetic peptide corresponding to a region derived from 40-52 amino acids of human solute carrier family 25 (mitochondrial carrier; adenine nucleotide translocator), member 4
Formulation:	PBS pH7.3, 0.05% NaN ₃ , 50% glycerol
Concentration:	lot specific
Purification:	Antigen affinity purification
Conjugation:	Unconjugated
Storage:	Store at -20°C as received.
Stability:	Stable for 12 months from date of receipt.
Predicted Protein Size:	33 kDa
Gene Name:	solute carrier family 25 member 4
Database Link:	NP_001142 Entrez Gene 11739 Mouse Entrez Gene 85333 Rat Entrez Gene 291 Human P12235



[View online »](#)

Background: This gene is a member of the mitochondrial carrier subfamily of solute carrier protein genes. The product of this gene functions as a gated pore that translocates ADP from the mitochondrial matrix into the cytoplasm. The protein forms a homodimer embedded in the inner mitochondria membrane. Mutations in this gene have been shown to result in autosomal dominant progressive external ophthalmoplegia and familial hypertrophic cardiomyopathy.

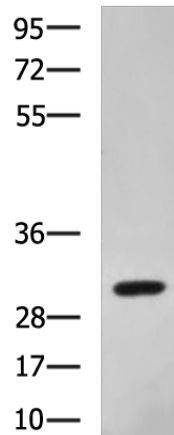
Synonyms: 1; AAC1; ANT; ANT 1; ANT1; MTDPS12; PEO2; PEO3; T1

Protein Families: Druggable Genome, Transmembrane

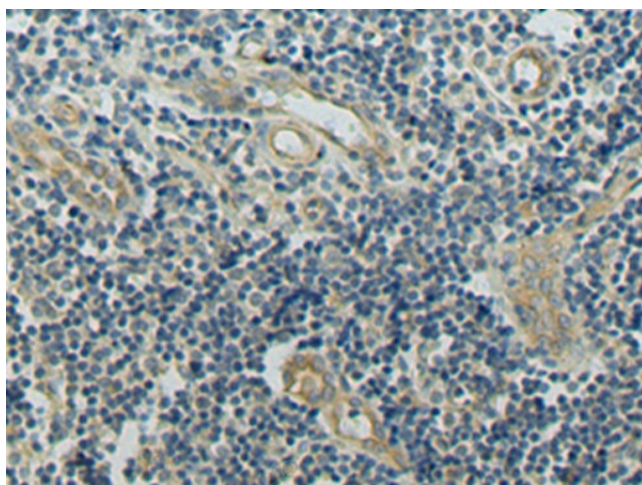
Protein Pathways: Calcium signaling pathway, Huntington's disease, Parkinson's disease

Product images:

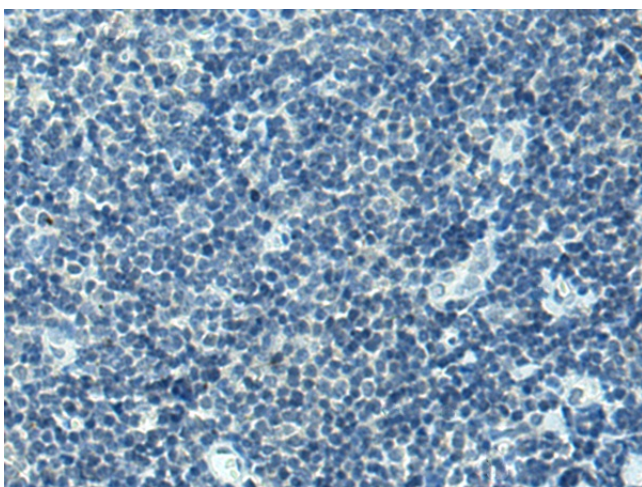
kDa



Gel: 8%SDS-PAGE
Lysate: 40 µg
Lane: Human heart tissue lysate
Primary antibody: TA321287 (SLC25A4 Antibody) at dilution 1/800
Secondary antibody: Goat anti rabbit IgG at 1/5000 dilution
Exposure time: 3 minutes



Immunohistochemistry of paraffin-embedded Human tonsil tissue using TA321287 (SLC25A4 Antibody) at dilution 1/35 (Original magnification: ×200)



Immunohistochemistry of paraffin-embedded Human tonsil tissue using TA321287 (SLC25A4 Antibody) at dilution 1/35, treated with synthetic peptide. (Original magnification: $\times 200$)