

## Product datasheet for **TA321285**

### Angiopoietin 1 (ANGPT1) Rabbit Polyclonal Antibody

#### Product data:

Product Type:	Primary Antibodies
Applications:	IHC, WB
Recommended Dilution:	WB: 200-1000 WB positive control: Human prostate tissue lysate IHC: 25-100 Positive control: Human liver cancer Predicted cell location: Cytoplasm
Reactivity:	Human, Mouse, Rat
Host:	Rabbit
Isotype:	IgG
Clonality:	Polyclonal
Immunogen:	Full length fusion protein
Formulation:	PBS pH7.3, 0.05% NaN <sub>3</sub> , 50% glycerol
Concentration:	lot specific
Purification:	Antigen affinity purification
Conjugation:	Unconjugated
Storage:	Store at -20°C as received.
Stability:	Stable for 12 months from date of receipt.
Gene Name:	angiopoietin 1
Database Link:	<a href="#">NP_001137</a> <a href="#">Entrez Gene 11600 Mouse</a> <a href="#">Entrez Gene 89807 Rat</a> <a href="#">Entrez Gene 284 Human</a> <a href="#">Q15389</a>



[View online »](#)

**Background:**

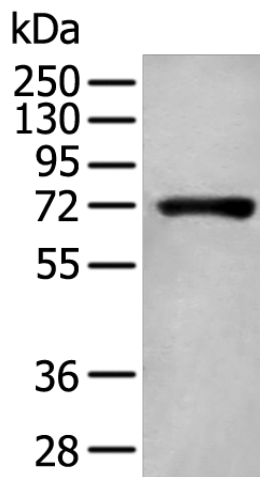
Angiotensins are proteins with important roles in vascular development and angiogenesis. All angiotensins bind with similar affinity to an endothelial cell-specific tyrosine-protein kinase receptor. The protein encoded by this gene is a secreted glycoprotein that activates the receptor by inducing its tyrosine phosphorylation. It plays a critical role in mediating reciprocal interactions between the endothelium and surrounding matrix and mesenchyme and inhibits endothelial permeability. The protein also contributes to blood vessel maturation and stability, and may be involved in early development of the heart. Alternative splicing results in multiple transcript variants encoding distinct isoforms.

**Synonyms:**

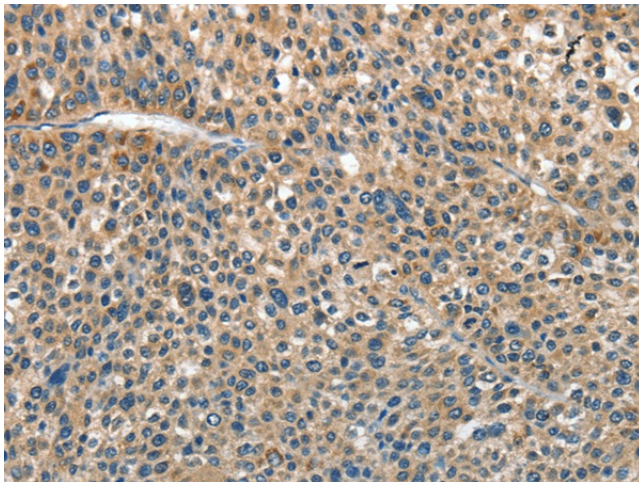
AGP1; AGPT; ANG1

**Protein Families:**

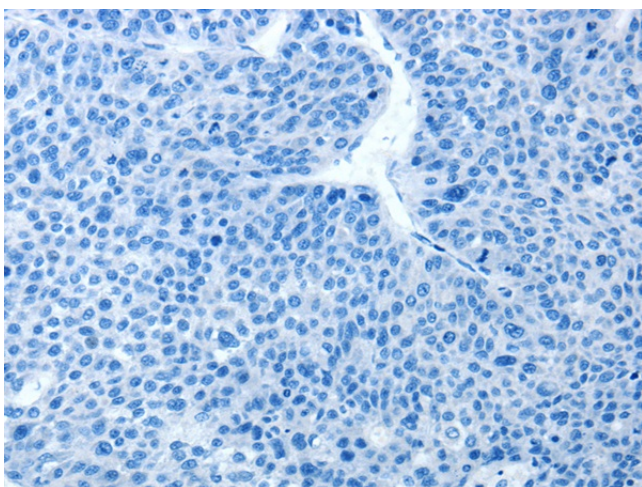
Druggable Genome, ES Cell Differentiation/IPS, Secreted Protein

**Product images:**

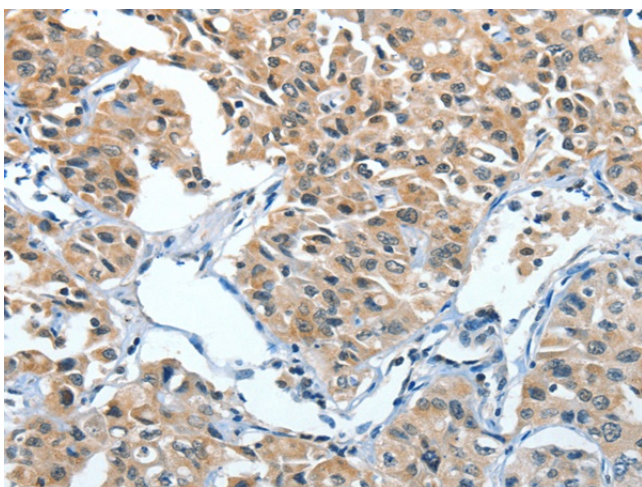
Gel: 8%SDS-PAGE  
Lysate: 40 µg  
Lane: Human prostate tissue lysate  
Primary antibody: TA321285 (ANGPT1 Antibody) at dilution 1/250  
Secondary antibody: Goat anti rabbit IgG at 1/8000 dilution  
Exposure time: 40 seconds



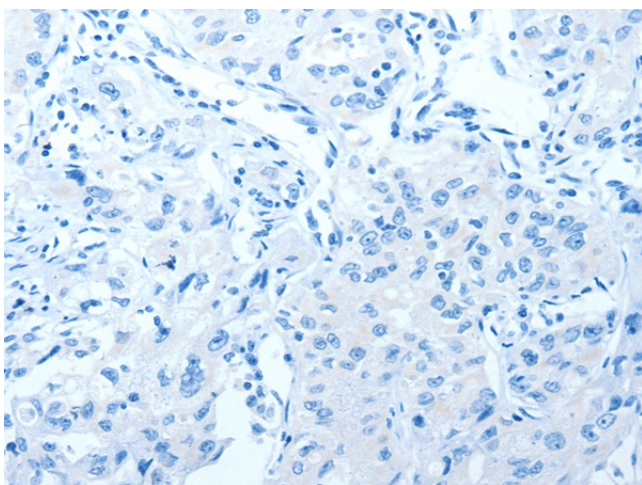
Immunohistochemistry of paraffin-embedded Human liver cancer tissue using TA321285 (ANGPT1 Antibody) at dilution 1/30 (Original magnification: ×200)



Immunohistochemistry of paraffin-embedded Human liver cancer tissue using TA321285 (ANGPT1 Antibody) at dilution 1/30, treated with fusion protein. (Original magnification: x200)



Immunohistochemistry of paraffin-embedded Human lung cancer tissue using TA321285 (ANGPT1 Antibody) at dilution 1/30 (Original magnification: x200)



Immunohistochemistry of paraffin-embedded Human lung cancer tissue using TA321285 (ANGPT1 Antibody) at dilution 1/30, treated with fusion protein. (Original magnification: x200)