

## Product datasheet for **TA321284S**

### Angiotensin 1 (ANGPT1) Rabbit Polyclonal Antibody

#### Product data:

Product Type:	Primary Antibodies
Applications:	IHC, WB
Recommended Dilution:	WB: 500-2000 WB positive control: Human prostate tissue and testis tissue lysates IHC: 50-200 Positive control: Human thyroid cancer Predicted cell location: Cytoplasm
Reactivity:	Human, Mouse, Rat
Host:	Rabbit
Isotype:	IgG
Clonality:	Polyclonal
Immunogen:	Full length fusion protein
Formulation:	PBS pH7.3, 0.05% NaN <sub>3</sub> , 50% glycerol
Purification:	Antigen affinity purification
Conjugation:	Unconjugated
Storage:	Store at -20°C as received.
Stability:	Stable for 12 months from date of receipt.
Gene Name:	angiotensin 1
Database Link:	<a href="#">NP_001137</a> <a href="#">Entrez Gene 11600 Mouse</a> <a href="#">Entrez Gene 89807 Rat</a> <a href="#">Entrez Gene 284 Human</a> <a href="#">Q15389</a>

**Background:** Angiotensins are proteins with important roles in vascular development and angiogenesis. All angiotensins bind with similar affinity to an endothelial cell-specific tyrosine-protein kinase receptor. The protein encoded by this gene is a secreted glycoprotein that activates the receptor by inducing its tyrosine phosphorylation. It plays a critical role in mediating reciprocal interactions between the endothelium and surrounding matrix and mesenchyme and inhibits endothelial permeability. The protein also contributes to blood vessel maturation and stability, and may be involved in early development of the heart. Alternative splicing results in multiple transcript variants encoding distinct isoforms.

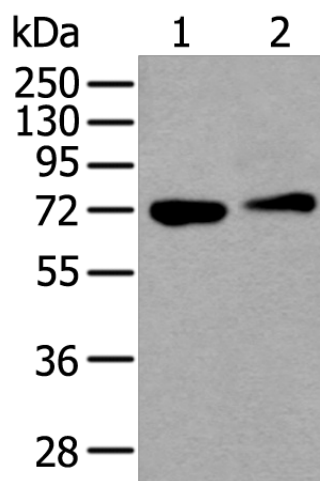


[View online »](#)

Synonyms: AGP1; AGPT; ANG1

Protein Families: Druggable Genome, ES Cell Differentiation/IPS, Secreted Protein

### Product images:



Gel: 8%SDS-PAGE

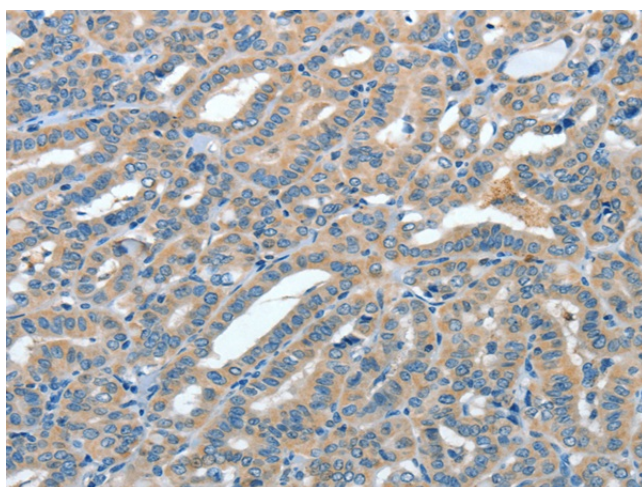
Lysate: 40 µg

Lane 1-2: Human prostate tissue and testis tissue lysates

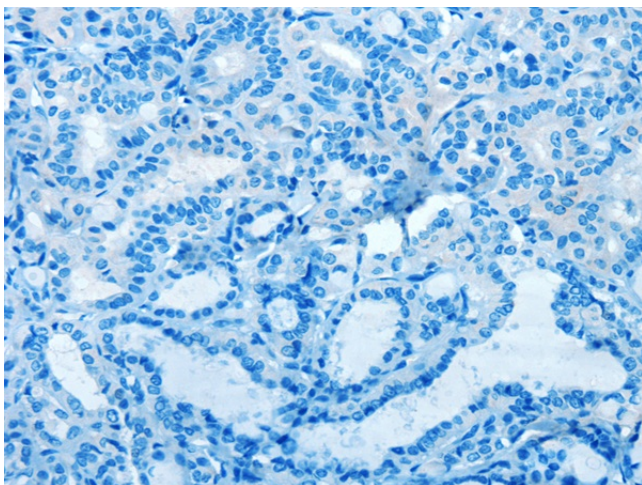
Primary antibody: [TA321284] (ANGPT1 Antibody) at dilution 1/450

Secondary antibody: Goat anti rabbit IgG at 1/8000 dilution

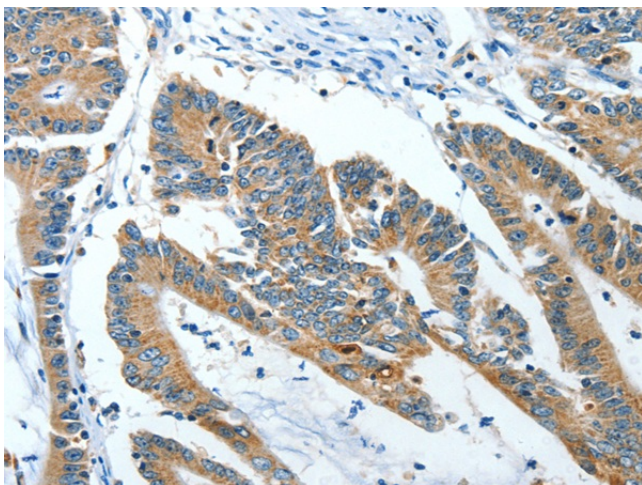
Exposure time: 40 seconds



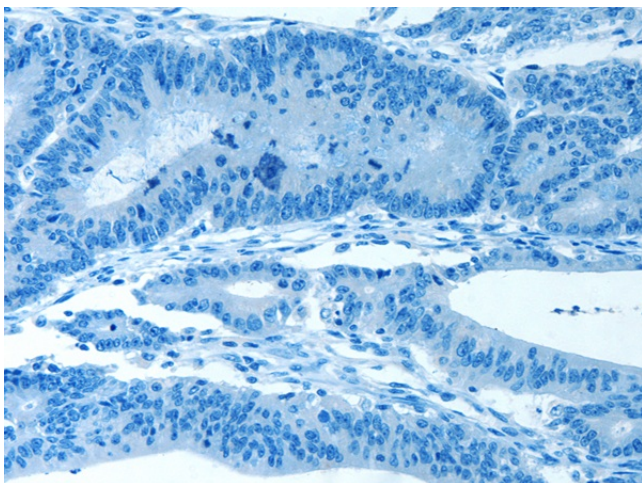
Immunohistochemistry of paraffin-embedded Human thyroid cancer tissue using [TA321284] (ANGPT1 Antibody) at dilution 1/50 (Original magnification: ×200)



Immunohistochemistry of paraffin-embedded Human thyroid cancer tissue using [TA321284] (ANGPT1 Antibody) at dilution 1/50, treated with fusion protein. (Original magnification:  $\times 200$ )



Immunohistochemistry of paraffin-embedded Human colon cancer tissue using [TA321284] (ANGPT1 Antibody) at dilution 1/50 (Original magnification:  $\times 200$ )



Immunohistochemistry of paraffin-embedded Human colon cancer tissue using [TA321284] (ANGPT1 Antibody) at dilution 1/50, treated with fusion protein. (Original magnification:  $\times 200$ )