

## Product datasheet for **TA321282**

### alpha 1 Fetoprotein (AFP) Rabbit Polyclonal Antibody

#### Product data:

|                       |  |
|-----------------------|--|
| Product Type:         | Primary Antibodies   |
| Applications:         | IHC, WB  |
| Recommended Dilution: | WB: 200-1000<br>WB positive control: 231, Hela and HepG2 cell lysates<br>IHC: 30-150<br>Positive control: Human thyroid cancer<br>Predicted cell location: Cytoplasm |
| Reactivity:           | Human  |
| Host:                 | Rabbit   |
| Isotype:              | IgG  |
| Clonality:            | Polyclonal   |
| Immunogen:            | Fusion protein corresponding to C terminal 350 amino acids of Human Alpha-fetoprotein  |
| Formulation:          | PBS pH7.3, 0.05% NaN <sub>3</sub> , 50% glycerol   |
| Concentration:        | lot specific   |
| Purification:         | Antigen affinity purification  |
| Conjugation:          | Unconjugated   |
| Storage:              | Store at -20°C as received.  |
| Stability:            | Stable for 12 months from date of receipt.   |
| Gene Name:            | alpha fetoprotein  |
| Database Link:        | <a href="#">NP_001125</a><br><a href="#">Entrez Gene 174 Human</a><br><a href="#">P02771</a>   |



[View online »](#)

**Background:**

This gene encodes alpha-fetoprotein; a major plasma protein produced by the yolk sac and the liver during fetal life. Alpha-fetoprotein expression in adults is often associated with hepatoma or teratoma. However; hereditary persistence of alpha-fetoprotein may also be found in individuals with no obvious pathology. The protein is thought to be the fetal counterpart of serum albumin; and the alpha-fetoprotein and albumin genes are present in tandem in the same transcriptional orientation on chromosome 4. Alpha-fetoprotein is found in monomeric as well as dimeric and trimeric forms; and binds copper; nickel; fatty acids and bilirubin. The level of alpha-fetoprotein in amniotic fluid is used to measure renal loss of protein to screen for spina bifida and anencephaly.

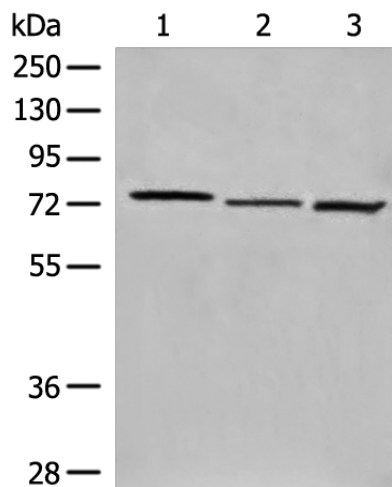
**Synonyms:**

AFPD; FETA; HPAFP

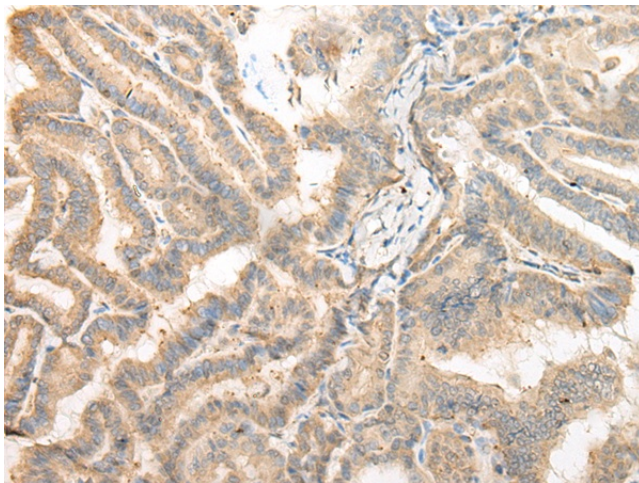
**Protein Families:**

Druggable Genome, Secreted Protein

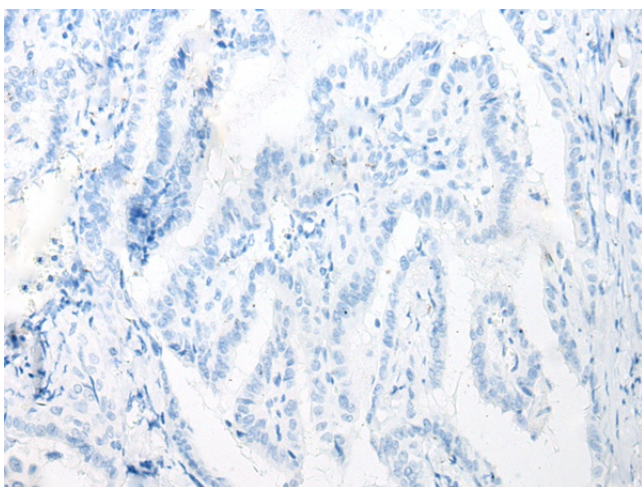
**Product images:**



Gel: 8%SDS-PAGE  
 Lysate: 40 µg  
 Lane 1-3: 231  
 HeLa and HepG2 cell lysates  
 Primary antibody: TA321282 (AFP Antibody) at dilution 1/350  
 Secondary antibody: Goat anti rabbit IgG at 1/8000 dilution  
 Exposure time: 5 seconds



Immunohistochemistry of paraffin-embedded Human thyroid cancer tissue using TA321282 (AFP Antibody) at dilution 1/25 (Original magnification: x200)



Immunohistochemistry of paraffin-embedded Human thyroid cancer tissue using TA321282 (AFP Antibody) at dilution 1/25, treated with fusion protein. (Original magnification: ×200)