

Product datasheet for **TA321279**

ADFP (PLIN2) Rabbit Polyclonal Antibody

Product data:

Product Type:	Primary Antibodies
Applications:	IHC, WB
Recommended Dilution:	WB: 500-2000 WB positive control: Human liver cancer and mouse brain tissue IHC: 25-100 Positive control: Human lung cancer Predicted cell location: Cytoplasm
Reactivity:	Human, Mouse
Host:	Rabbit
Isotype:	IgG
Clonality:	Polyclonal
Immunogen:	Synthetic peptide corresponding to a region derived from 423-437 amino acids of human perilipin 2
Formulation:	PBS pH7.3, 0.05% NaN ₃ , 50% glycerol
Concentration:	lot specific
Purification:	Antigen affinity purification
Conjugation:	Unconjugated
Storage:	Store at -20°C as received.
Stability:	Stable for 12 months from date of receipt.
Predicted Protein Size:	48 kDa
Gene Name:	perilipin 2
Database Link:	NP_001113 Entrez Gene 11520 Mouse Entrez Gene 101055843 Mouse Entrez Gene 123 Human Q99541



[View online »](#)

Background:

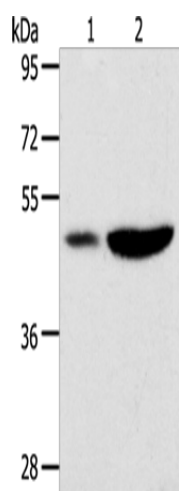
The protein encoded by this gene belongs to the perilipin family; members of which coat intracellular lipid storage droplets. This protein is associated with the lipid globule surface membrane material; and maybe involved in development and maintenance of adipose tissue. However; it is not restricted to adipocytes as previously thought; but is found in a wide range of cultured cell lines; including fibroblasts; endothelial and epithelial cells; and tissues; such as lactating mammary gland; adrenal cortex; Sertoli and Leydig cells; and hepatocytes in alcoholic liver cirrhosis; suggesting that it may serve as a marker of lipid accumulation in diverse cell types and diseases. Alternatively spliced transcript variants have been found for this gene.

Synonyms:

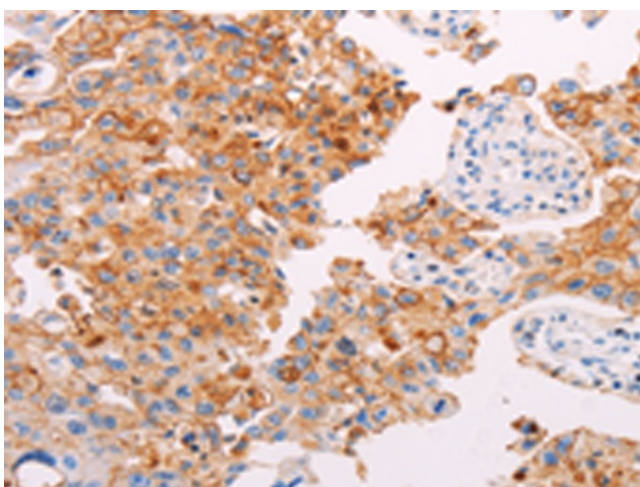
ADFP; ADRP

Protein Families:

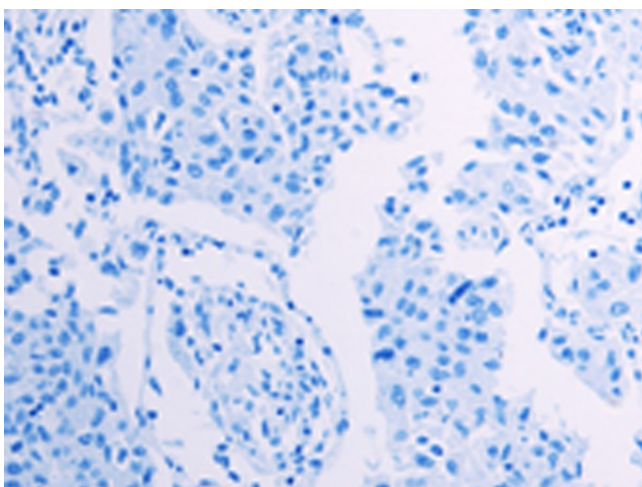
Druggable Genome

Product images:

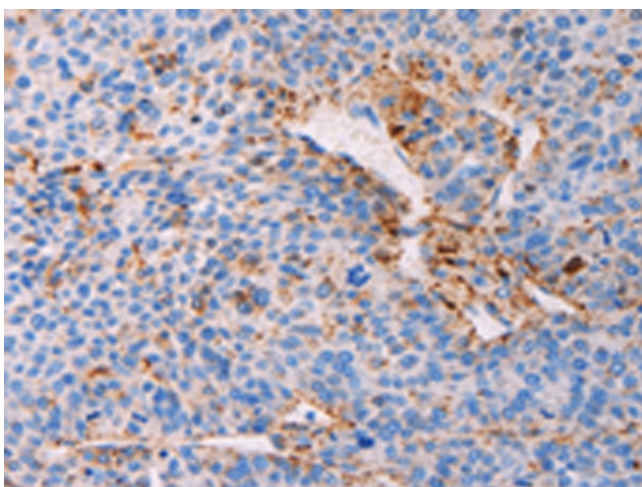
Gel: 10%SDS-PAGE
Lysate: 40 µg
Lane 1-2: Human liver cancer tissue
mouse brain tissue
Primary antibody: TA321279 (PLIN2 Antibody) at
dilution 1/300
Secondary antibody: Goat anti rabbit IgG at
1/8000 dilution
Exposure time: 40 seconds



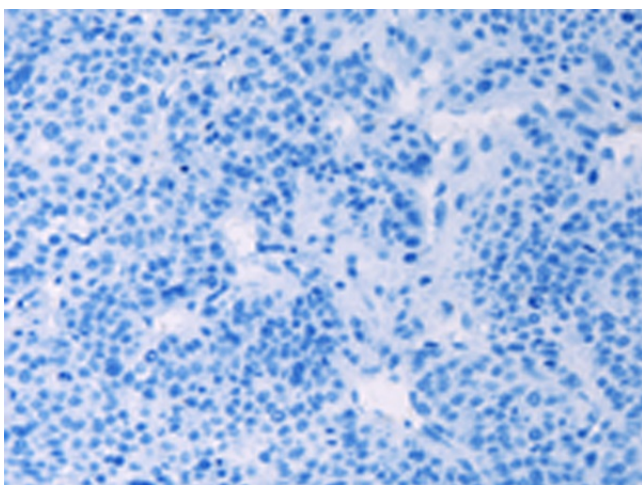
Immunohistochemistry of paraffin-embedded
Human lung cancer tissue using TA321279 (PLIN2
Antibody) at dilution 1/25 (Original magnification:
×200)



Immunohistochemistry of paraffin-embedded Human lung cancer tissue using TA321279 (PLIN2 Antibody) at dilution 1/25, treated with synthetic peptide. (Original magnification: ×200)



Immunohistochemistry of paraffin-embedded Human liver cancer tissue using TA321279 (PLIN2 Antibody) at dilution 1/25 (Original magnification: ×200)



Immunohistochemistry of paraffin-embedded Human liver cancer tissue using TA321279 (PLIN2 Antibody) at dilution 1/25, treated with synthetic peptide. (Original magnification: ×200)