

Product datasheet for **TA321278**

ADFP (PLIN2) Rabbit Polyclonal Antibody

Product data:

| | |
|-------------------------|--|
| Product Type: | Primary Antibodies |
| Applications: | IHC, WB |
| Recommended Dilution: | WB: 500-2000 WB positive control: Human liver cancer and mouse brain tissue IHC: 25-100 Positive control: Human liver cancer Predicted cell location: Cytoplasm |
| Reactivity: | Human, Mouse |
| Host: | Rabbit |
| Isotype: | IgG |
| Clonality: | Polyclonal |
| Immunogen: | Synthetic peptide corresponding to a region derived from 423-437 amino acids of human perilipin 2 |
| Formulation: | PBS pH7.3, 0.05% NaN ₃ , 50% glycerol |
| Concentration: | lot specific |
| Purification: | Antigen affinity purification |
| Conjugation: | Unconjugated |
| Storage: | Store at -20°C as received. |
| Stability: | Stable for 12 months from date of receipt. |
| Predicted Protein Size: | 48 kDa |
| Gene Name: | perilipin 2 |
| Database Link: | NP_001113 Entrez Gene 11520 Mouse Entrez Gene 101055843 Mouse Entrez Gene 123 Human Q99541 |



[View online »](#)

Background:

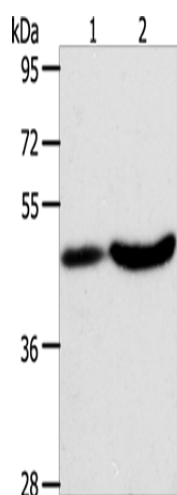
The protein encoded by this gene belongs to the perilipin family; members of which coat intracellular lipid storage droplets. This protein is associated with the lipid globule surface membrane material; and maybe involved in development and maintenance of adipose tissue. However; it is not restricted to adipocytes as previously thought; but is found in a wide range of cultured cell lines; including fibroblasts; endothelial and epithelial cells; and tissues; such as lactating mammary gland; adrenal cortex; Sertoli and Leydig cells; and hepatocytes in alcoholic liver cirrhosis; suggesting that it may serve as a marker of lipid accumulation in diverse cell types and diseases. Alternatively spliced transcript variants have been found for this gene.

Synonyms:

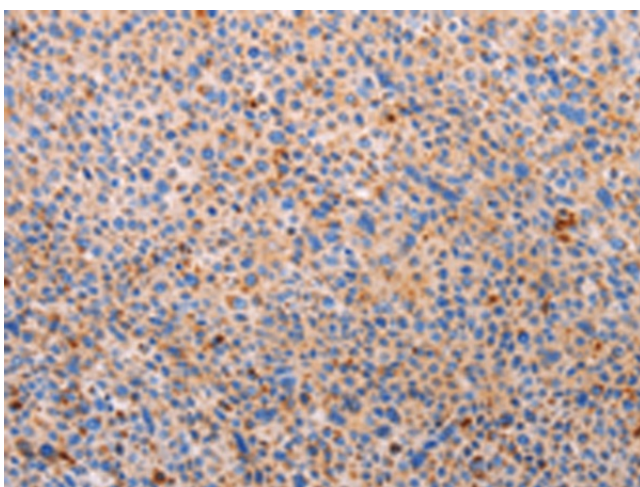
ADFP; ADRP

Protein Families:

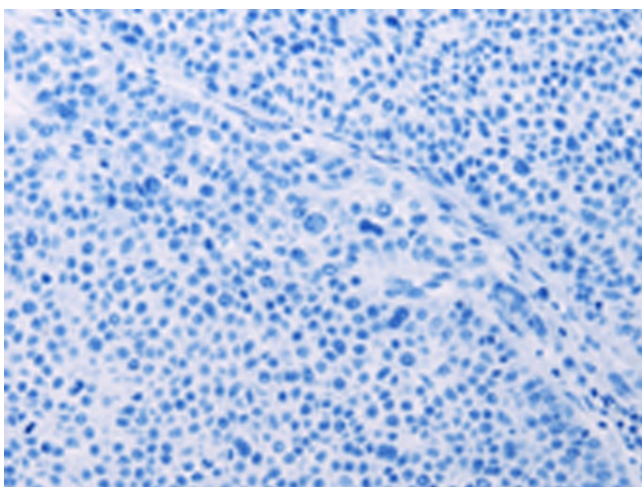
Druggable Genome

Product images:

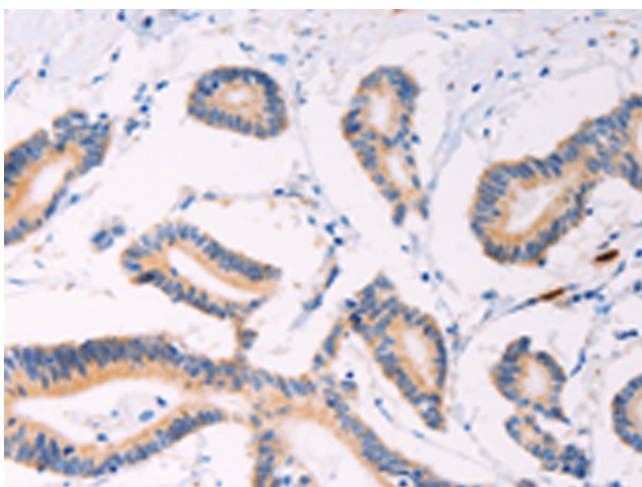
Gel: 10%SDS-PAGE
Lysate: 40 µg
Lane 1-2: Human liver cancer tissue
mouse brain tissue
Primary antibody: TA321278 (PLIN2 Antibody) at dilution 1/200
Secondary antibody: Goat anti rabbit IgG at 1/8000 dilution
Exposure time: 40 seconds



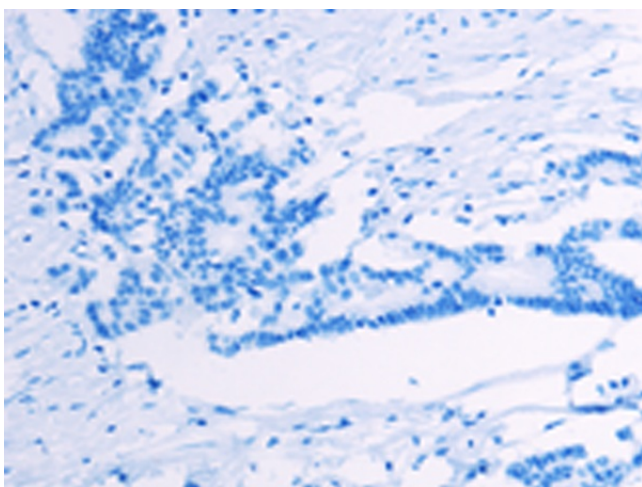
Immunohistochemistry of paraffin-embedded Human liver cancer tissue using TA321278 (PLIN2 Antibody) at dilution 1/20 (Original magnification: ×200)



Immunohistochemistry of paraffin-embedded Human liver cancer tissue using TA321278 (PLIN2 Antibody) at dilution 1/20, treated with synthetic peptide. (Original magnification: $\times 200$)



Immunohistochemistry of paraffin-embedded Human colon cancer tissue using TA321278 (PLIN2 Antibody) at dilution 1/20 (Original magnification: $\times 200$)



Immunohistochemistry of paraffin-embedded Human colon cancer tissue using TA321278 (PLIN2 Antibody) at dilution 1/20, treated with synthetic peptide. (Original magnification: $\times 200$)