

Product datasheet for **TA321277**

alpha Actinin (ACTN1) Rabbit Polyclonal Antibody

Product data:

Product Type:	Primary Antibodies
Applications:	IHC, WB
Recommended Dilution:	WB: 500-2000 WB positive control: 231□A549 and Hela cell□Human fetal muscle tissue lysates IHC: 15-50 Positive control: Human thyroid cancer Predicted cell location: Cytoplasm
Reactivity:	Human, Mouse, Rat
Host:	Rabbit
Isotype:	IgG
Clonality:	Polyclonal
Immunogen:	Fusion protein corresponding to N terminal 2470 amino acids of human actinin, alpha 1
Formulation:	PBS pH7.3, 0.05% NaN ₃ , 50% glycerol
Concentration:	lot specific
Purification:	Antigen affinity purification
Conjugation:	Unconjugated
Storage:	Store at -20°C as received.
Stability:	Stable for 12 months from date of receipt.
Gene Name:	actinin alpha 1
Database Link:	NP_001093 Entrez Gene 81634 Rat Entrez Gene 109711 Mouse Entrez Gene 87 Human P12814



[View online »](#)

Background:

Alpha actinins belong to the spectrin gene superfamily which represents a diverse group of cytoskeletal proteins, including the alpha and beta spectrins and dystrophins. Alpha actinin is an actin-binding protein with multiple roles in different cell types. In nonmuscle cells, the cytoskeletal isoform is found along microfilament bundles and adherens-type junctions, where it is involved in binding actin to the membrane. In contrast, skeletal, cardiac, and smooth muscle isoforms are localized to the Z-disc and analogous dense bodies, where they help anchor the myofibrillar actin filaments. This gene encodes a nonmuscle, cytoskeletal, alpha actinin isoform and maps to the same site as the structurally similar erythroid beta spectrin gene. Three transcript variants encoding different isoforms have been found for this gene.

Synonyms:

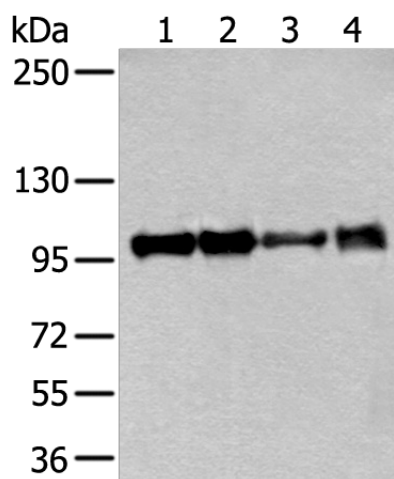
BDPLT15

Protein Families:

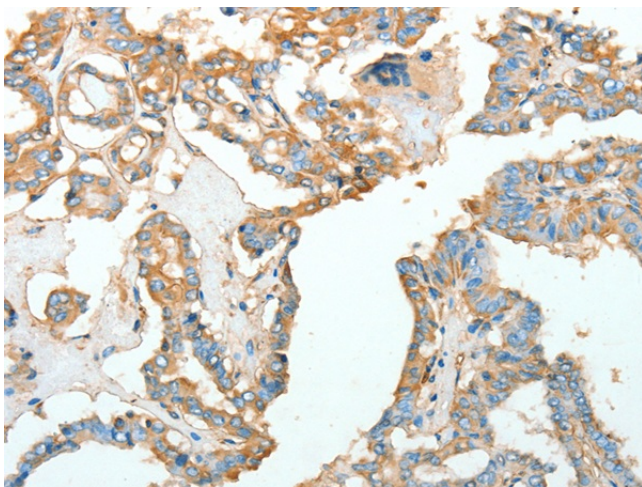
Druggable Genome, ES Cell Differentiation/IPS

Protein Pathways:

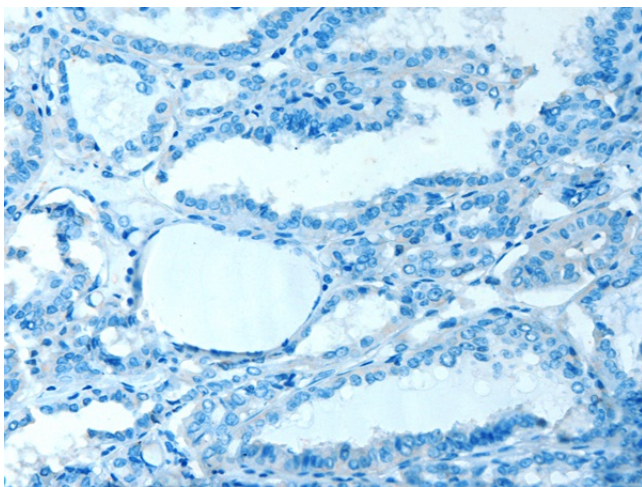
Adherens junction, Arrhythmogenic right ventricular cardiomyopathy (ARVC), Focal adhesion, Leukocyte transendothelial migration, Regulation of actin cytoskeleton, Systemic lupus erythematosus, Tight junction

Product images:

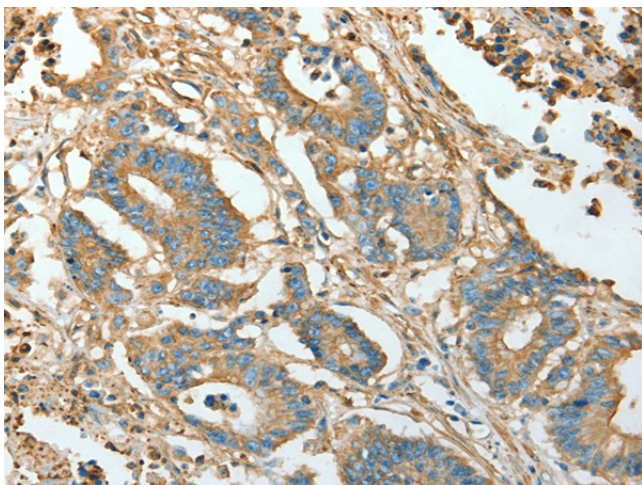
Gel: 6%SDS-PAGE
Lysate: 40 μ g
Lane 1-4: 231
A549 and HeLa cell
Human fetal muscle tissue lysates
Primary antibody: TA321277 (ACTN1 Antibody) at dilution 1/500
Secondary antibody: Goat anti rabbit IgG at 1/8000 dilution
Exposure time: 20 seconds



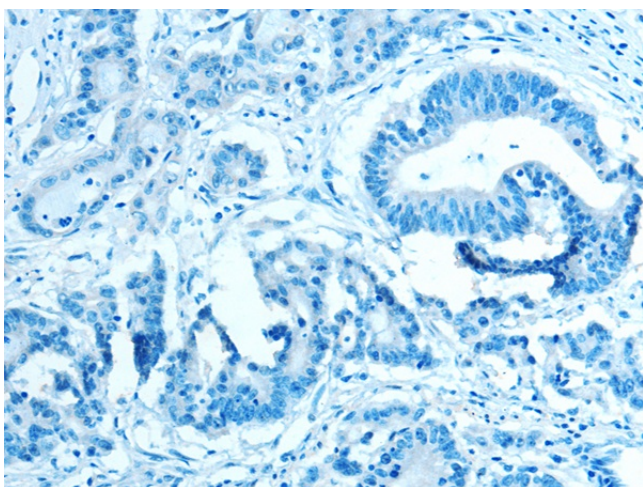
Immunohistochemistry of paraffin-embedded Human thyroid cancer tissue using TA321277 (ACTN1 Antibody) at dilution 1/10 (Original magnification: $\times 200$)



Immunohistochemistry of paraffin-embedded Human thyroid cancer tissue using TA321277 (ACTN1 Antibody) at dilution 1/10, treated with fusion protein. (Original magnification: $\times 200$)



Immunohistochemistry of paraffin-embedded Human colon cancer tissue using TA321277 (ACTN1 Antibody) at dilution 1/10 (Original magnification: $\times 200$)



Immunohistochemistry of paraffin-embedded Human colon cancer tissue using TA321277 (ACTN1 Antibody) at dilution 1/10, treated with fusion protein. (Original magnification: ×200)