

Product datasheet for **TA321276**

Aconitase 2 (ACO2) Rabbit Polyclonal Antibody

Product data:

Product Type:	Primary Antibodies
Applications:	IHC, WB
Recommended Dilution:	WB: 500-2000 WB positive control: Mouse heart tissue and hela cells IHC: 50-200 Positive control: Human breast cancer Predicted cell location: Cytoplasm, Nucleus
Reactivity:	Human, Mouse, Rat
Host:	Rabbit
Isotype:	IgG
Clonality:	Polyclonal
Immunogen:	Synthetic peptide corresponding to a region derived from 766-780 amino acids of human aconitase 2, mitochondrial
Formulation:	PBS pH7.3, 0.05% NaN ₃ , 50% glycerol
Concentration:	lot specific
Purification:	Antigen affinity purification
Conjugation:	Unconjugated
Storage:	Store at -20°C as received.
Stability:	Stable for 12 months from date of receipt.
Predicted Protein Size:	85 kDa
Gene Name:	aconitase 2
Database Link:	NP_001089 Entrez Gene 11429 Mouse Entrez Gene 79250 Rat Entrez Gene 50 Human Q99798



[View online »](#)

Background:

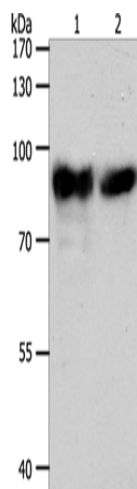
The protein encoded by this gene belongs to the aconitase/IPM isomerase family. It is an enzyme that catalyzes the interconversion of citrate to isocitrate via cis-aconitate in the second step of the TCA cycle. This protein is encoded in the nucleus and functions in the mitochondrion. It was found to be one of the mitochondrial matrix proteins that are preferentially degraded by the serine protease 15 (PRSS15), also known as Lon protease, after oxidative modification.?

Synonyms:

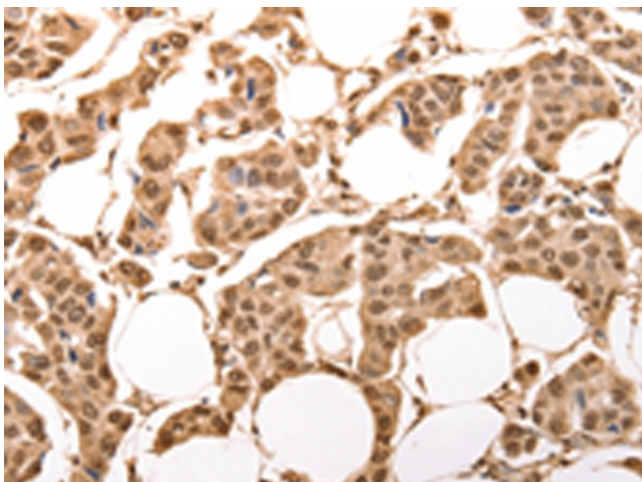
ACONM; HEL-S-284; ICRD; OCA8; OPA9

Protein Pathways:

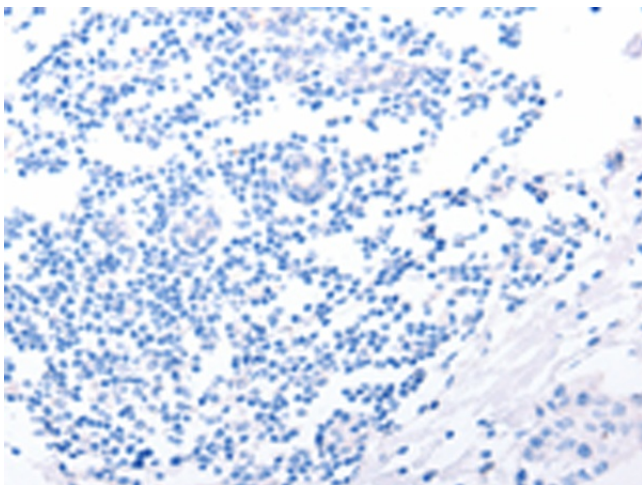
Citrate cycle (TCA cycle), Glyoxylate and dicarboxylate metabolism, Metabolic pathways

Product images:

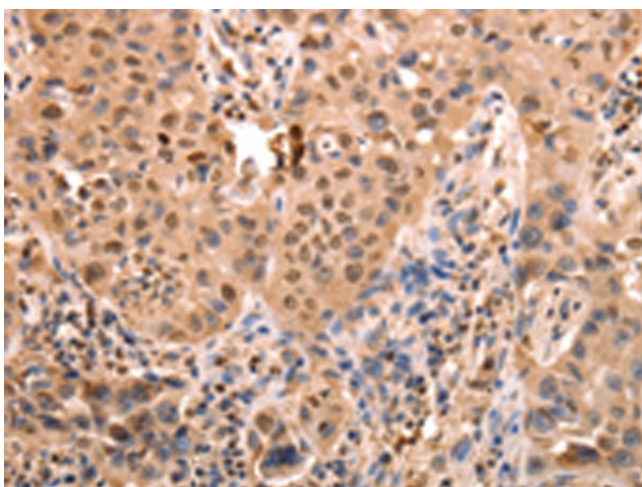
Gel: 8%SDS-PAGE
Lysate: 40 μ g
Lane 1-2: Mouse heart tissue
hela cells
Primary antibody: TA321276 (ACO2 Antibody) at dilution 1/400
Secondary antibody: Goat anti rabbit IgG at 1/8000 dilution
Exposure time: 3 seconds



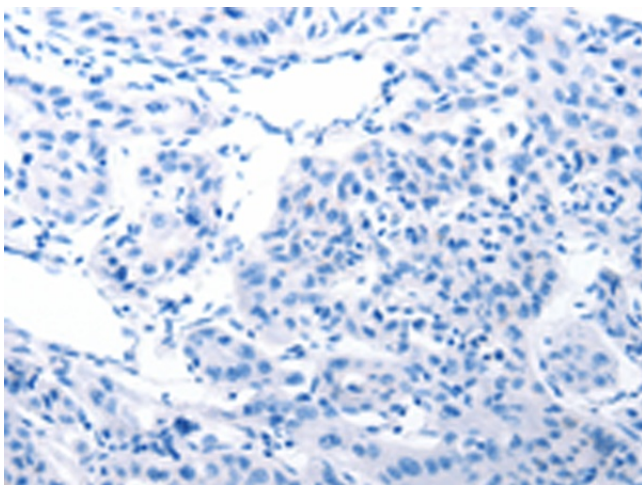
Immunohistochemistry of paraffin-embedded Human breast cancer tissue using TA321276 (ACO2 Antibody) at dilution 1/30 (Original magnification: \times 200)



Immunohistochemistry of paraffin-embedded Human breast cancer tissue using TA321276 (ACO2 Antibody) at dilution 1/30, treated with synthetic peptide. (Original magnification: ×200)



Immunohistochemistry of paraffin-embedded Human lung cancer tissue using TA321276 (ACO2 Antibody) at dilution 1/30 (Original magnification: ×200)



Immunohistochemistry of paraffin-embedded Human lung cancer tissue using TA321276 (ACO2 Antibody) at dilution 1/30, treated with synthetic peptide. (Original magnification: ×200)