

Product datasheet for **TA321274**

ODZ3 (TENM3) Rabbit Polyclonal Antibody

Product data:

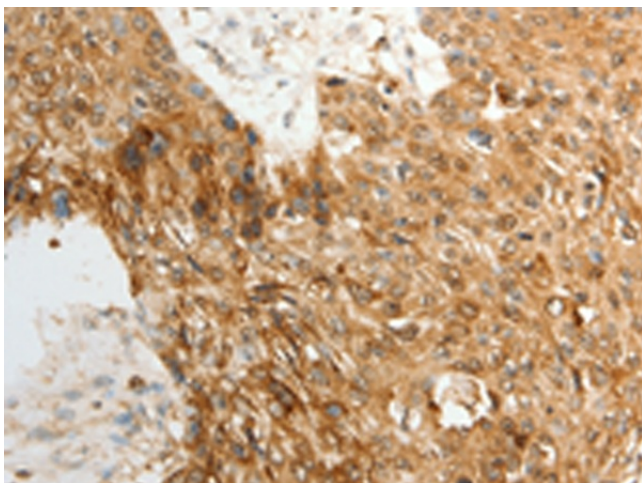
Product Type:	Primary Antibodies
Applications:	IHC
Recommended Dilution:	IHC: 50-200 Positive control: Human esophagus cancer Predicted cell location: Nucleus, Cytoplasm
Reactivity:	Human, Mouse
Host:	Rabbit
Isotype:	IgG
Clonality:	Polyclonal
Immunogen:	Synthetic peptide corresponding to a region derived from 2390-2402 amino acids of human teneurin transmembrane protein 3
Formulation:	PBS pH7.3, 0.05% NaN ₃ , 50% glycerol
Concentration:	lot specific
Purification:	Antigen affinity purification
Conjugation:	Unconjugated
Storage:	Store at -20°C as received.
Stability:	Stable for 12 months from date of receipt.
Gene Name:	teneurin transmembrane protein 3
Database Link:	NP_001073946 Entrez Gene 23965 Mouse Entrez Gene 55714 Human Q9P273
Background:	This protein involved in neural development; regulating the establishment of proper connectivity within the nervous system. It promotes axon guidance and homophilic cell adhesion. And it plays a role in the development of the visual pathway; regulates the formation in ipsilateral retinal mapping to both the dorsal lateral geniculate nucleus (dLGN) and the superior colliculus (SC). May be involved in the differentiation of the fibroblast-like cells in the superficial layer of mandibular condylar cartilage into chondrocytes.
Synonyms:	MCOPCB9; ODZ3; Ten-m3; TNM3



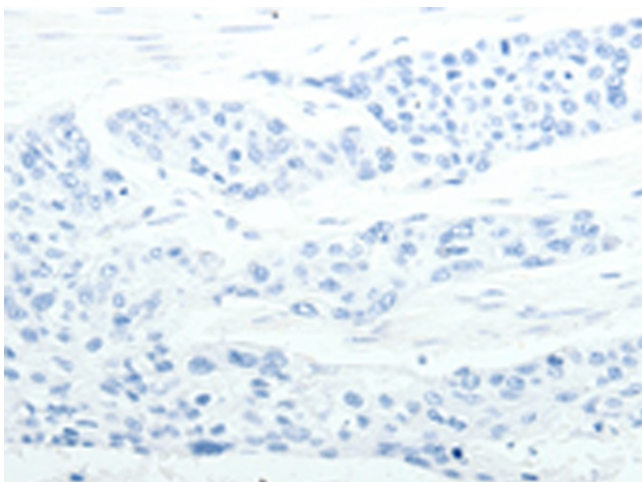
[View online »](#)

Protein Families: Druggable Genome, Transmembrane

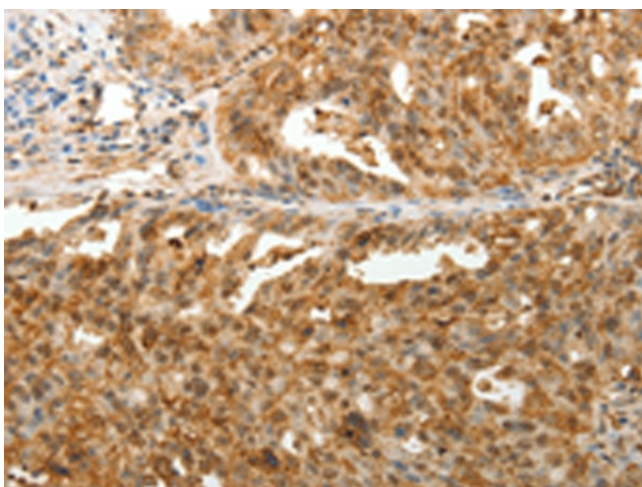
Product images:



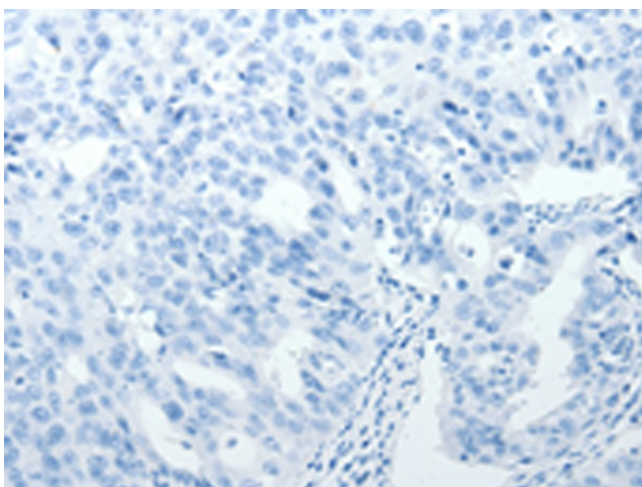
Immunohistochemistry of paraffin-embedded Human esophagus cancer tissue using TA321274 (TENM3 Antibody) at dilution 1/50 (Original magnification: $\times 200$)



Immunohistochemistry of paraffin-embedded Human esophagus cancer tissue using TA321274 (TENM3 Antibody) at dilution 1/50, treated with synthetic peptide. (Original magnification: $\times 200$)



Immunohistochemistry of paraffin-embedded Human ovarian cancer tissue using TA321274 (TENM3 Antibody) at dilution 1/50 (Original magnification: $\times 200$)



Immunohistochemistry of paraffin-embedded Human ovarian cancer tissue using TA321274 (TENM3 Antibody) at dilution 1/50, treated with synthetic peptide. (Original magnification: $\times 200$)