

## Product datasheet for **TA321273S**

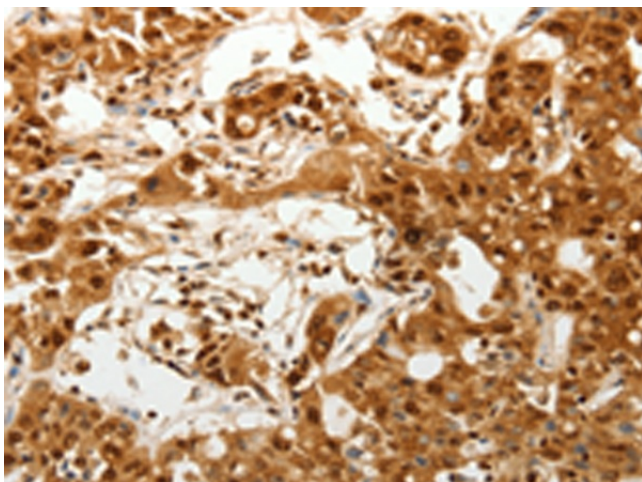
### ODZ3 (TENM3) Rabbit Polyclonal Antibody

#### Product data:

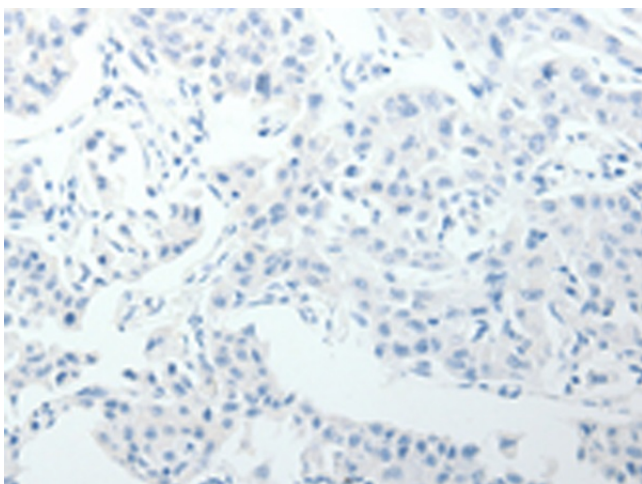
|                       |  |
|-----------------------|--|
| Product Type:         | Primary Antibodies   |
| Applications:         | IHC  |
| Recommended Dilution: | IHC: 100-300<br>Positive control: Human ovarian cancer<br>Predicted cell location: Nucleus, Cytoplasm  |
| Reactivity:           | Human, Mouse   |
| Host:                 | Rabbit   |
| Isotype:              | IgG  |
| Clonality:            | Polyclonal   |
| Immunogen:            | Synthetic peptide corresponding to a region derived from 2390-2402 amino acids of human teneurin transmembrane protein 3   |
| Formulation:          | PBS pH7.3, 0.05% NaN <sub>3</sub> , 50% glycerol   |
| Purification:         | Antigen affinity purification  |
| Conjugation:          | Unconjugated   |
| Storage:              | Store at -20°C as received.  |
| Stability:            | Stable for 12 months from date of receipt.   |
| Gene Name:            | teneurin transmembrane protein 3   |
| Database Link:        | <a href="#">NP_001073946</a><br><a href="#">Entrez Gene 23965 Mouse</a> <a href="#">Entrez Gene 55714 Human</a><br><a href="#">Q9P273</a>  |
| Background:           | This protein involved in neural development; regulating the establishment of proper connectivity within the nervous system. It promotes axon guidance and homophilic cell adhesion. And it plays a role in the development of the visual pathway; regulates the formation in ipsilateral retinal mapping to both the dorsal lateral geniculate nucleus (dLGN) and the superior colliculus (SC). May be involved in the differentiation of the fibroblast-like cells in the superficial layer of mandibular condylar cartilage into chondrocytes. |
| Synonyms:             | MCOPCB9; ODZ3; Ten-m3; TNM3  |
| Protein Families:     | Druggable Genome, Transmembrane  |



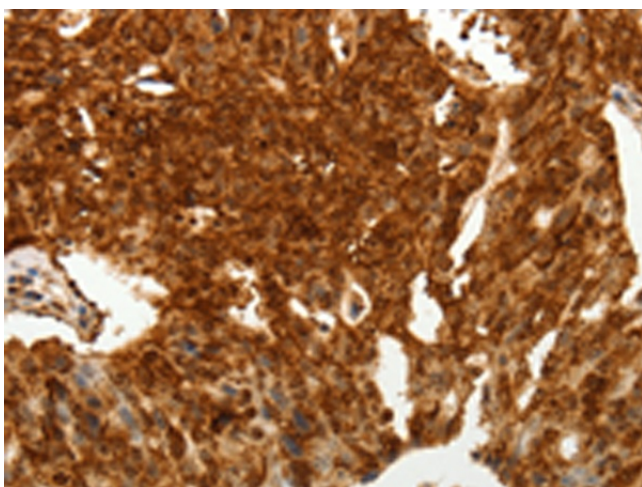
[View online »](#)

**Product images:**

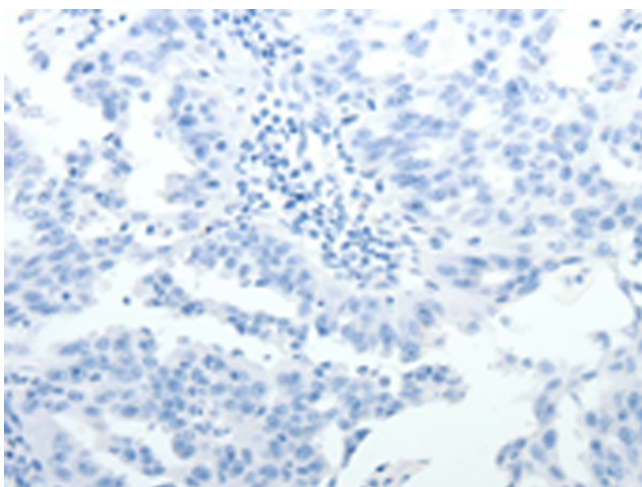
Immunohistochemistry of paraffin-embedded Human ovarian cancer tissue using [TA321273] (TENM3 Antibody) at dilution 1/50 (Original magnification: ×200)



Immunohistochemistry of paraffin-embedded Human ovarian cancer tissue using [TA321273] (TENM3 Antibody) at dilution 1/50, treated with synthetic peptide. (Original magnification: ×200)



Immunohistochemistry of paraffin-embedded Human lung cancer tissue using [TA321273] (TENM3 Antibody) at dilution 1/50 (Original magnification:  $\times 200$ )



Immunohistochemistry of paraffin-embedded Human lung cancer tissue using [TA321273] (TENM3 Antibody) at dilution 1/50, treated with synthetic peptide. (Original magnification:  $\times 200$ )