

Product datasheet for **TA321271**

Somatostatin Receptor 2 (SSTR2) Rabbit Polyclonal Antibody

Product data:

Product Type:	Primary Antibodies
Applications:	IHC, WB
Recommended Dilution:	WB: 200-1000 WB positive control: Human fetal brain tissue lysate IHC: 40-200 Positive control: Human cervical cancer Predicted cell location: Cytoplasm and Cell membrane
Reactivity:	Human, Mouse, Rat
Host:	Rabbit
Isotype:	IgG
Clonality:	Polyclonal
Immunogen:	Synthetic peptide corresponding to a region derived from 355-369 amino acids of human somatostatin receptor 2
Formulation:	PBS pH7.3, 0.05% NaN ₃ , 50% glycerol
Concentration:	lot specific
Purification:	Antigen affinity purification
Conjugation:	Unconjugated
Storage:	Store at -20°C as received.
Stability:	Stable for 12 months from date of receipt.
Predicted Protein Size:	41 kDa
Gene Name:	somatostatin receptor 2
Database Link:	NP_001041 Entrez Gene 20606 Mouse Entrez Gene 54305 Rat Entrez Gene 6752 Human P30874



[View online »](#)

Background:

Somatostatin acts at many sites to inhibit the release of many hormones and other secretory proteins. The biologic effects of somatostatin are probably mediated by a family of G protein-coupled receptors that are expressed in a tissue-specific manner. SSTR2 is a member of the superfamily of receptors having seven transmembrane segments and is expressed in highest levels in cerebrum and kidney.

Synonyms:

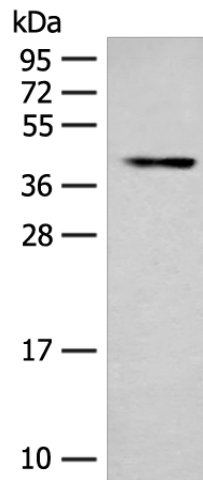
SRIF-1; SS2R

Protein Families:

Druggable Genome, GPCR, Transmembrane

Protein Pathways:

Neuroactive ligand-receptor interaction

Product images:


Gel: 12%SDS-PAGE

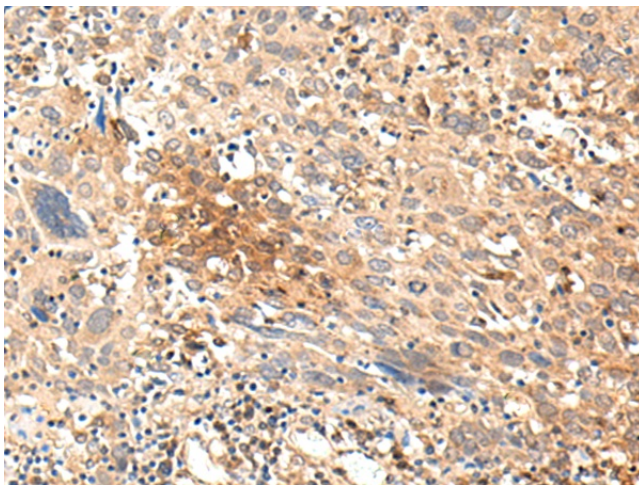
Lysate: 40 µg

Lane: Human fetal brain tissue lysate

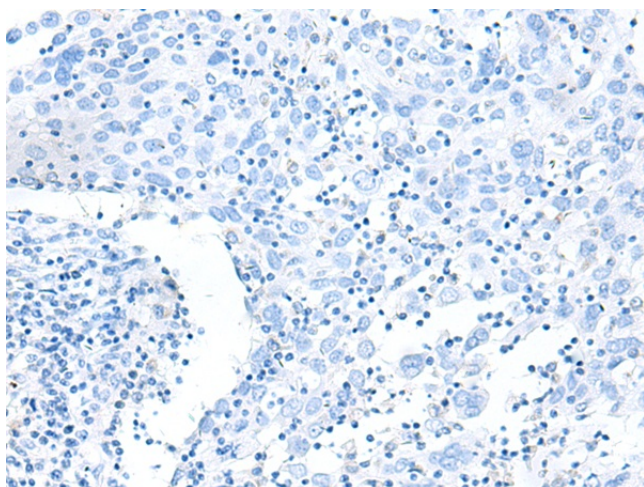
Primary antibody: TA321271 (SSTR2 Antibody) at dilution 1/200

Secondary antibody: Goat anti rabbit IgG at 1/8000 dilution

Exposure time: 30 seconds



Immunohistochemistry of paraffin-embedded Human cervical cancer tissue using TA321271 (SSTR2 Antibody) at dilution 1/35 (Original magnification: ×200)



Immunohistochemistry of paraffin-embedded Human cervical cancer tissue using TA321271 (SSTR2 Antibody) at dilution 1/35, treated with synthetic peptide. (Original magnification: ×200)