

## Product datasheet for **TA321267S**

### Transferrin (TF) Rabbit Polyclonal Antibody

#### Product data:

Product Type:	Primary Antibodies
Applications:	IHC, WB
Recommended Dilution:	WB: 500-2000 WB positive control: Human kidney and prostate tissue IHC: 25-100 Positive control: Human prostate cancer Predicted cell location: Cytoplasm
Reactivity:	Human
Host:	Rabbit
Isotype:	IgG
Clonality:	Polyclonal
Immunogen:	Synthetic peptide corresponding to a region derived from 562-577 amino acids of Human Transferrin
Formulation:	PBS pH7.3, 0.05% NaN <sub>3</sub> , 50% glycerol
Purification:	Antigen affinity purification
Conjugation:	Unconjugated
Storage:	Store at -20°C as received.
Stability:	Stable for 12 months from date of receipt.
Predicted Protein Size:	77 kDa
Gene Name:	transferrin
Database Link:	<a href="#">NP_001054</a> <a href="#">Entrez Gene 7018 Human</a> <a href="#">P02787</a>



[View online »](#)

**Background:**

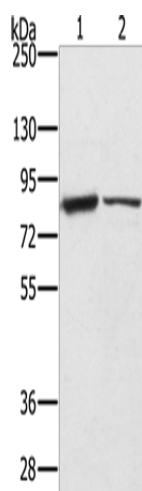
This gene encodes a glycoprotein with an approximate molecular weight of 76.5 kDa. It is thought to have been created as a result of an ancient gene duplication event that led to generation of homologous C and N-terminal domains each of which binds one ion of ferric iron. The function of this protein is to transport iron from the intestine; reticuloendothelial system; and liver parenchymal cells to all proliferating cells in the body. This protein may also have a physiologic role as granulocyte/pollen-binding protein (GPBP) involved in the removal of certain organic matter and allergens from serum.

**Synonyms:**

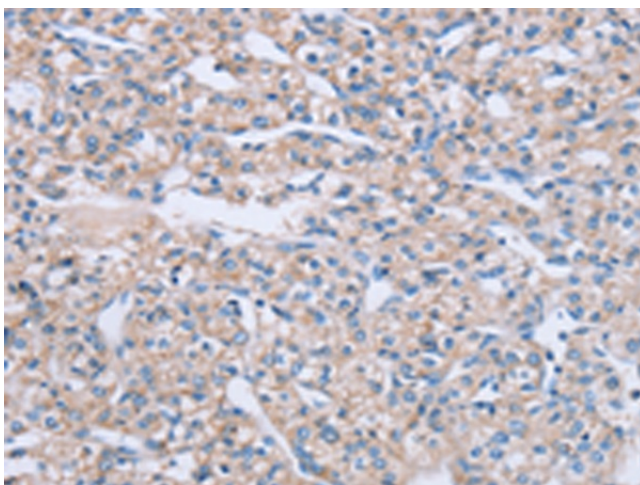
HEL-S-71p; PRO1557; PRO2086; TFQTL1

**Protein Families:**

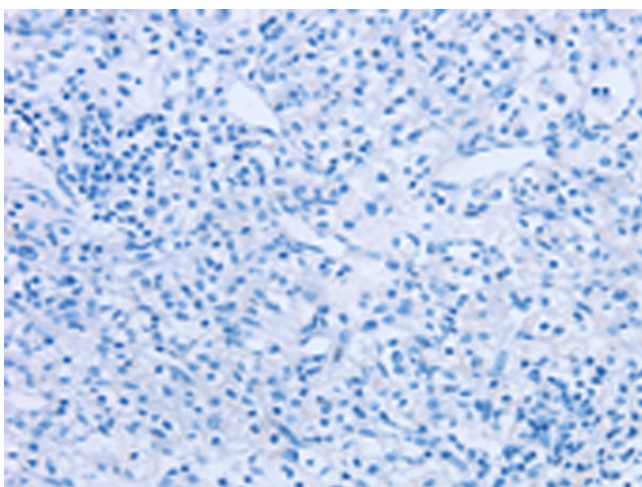
Druggable Genome, Secreted Protein

**Product images:**

Gel: 6%SDS-PAGE  
Lysate: 40  $\mu$ g  
Lane 1-2: Human kidney tissue  
Human prostate tissue  
Primary antibody: [TA321267] (TF Antibody) at dilution 1/200  
Secondary antibody: Goat anti rabbit IgG at 1/8000 dilution  
Exposure time: 20 seconds



Immunohistochemistry of paraffin-embedded Human prostate cancer tissue using [TA321267] (TF Antibody) at dilution 1/20 (Original magnification:  $\times$ 200)



Immunohistochemistry of paraffin-embedded Human prostate cancer tissue using [TA321267] (TF Antibody) at dilution 1/20, treated with synthetic peptide. (Original magnification:  $\times 200$ )