

Product datasheet for **TA321264**

Somatostatin Receptor 4 (SSTR4) Rabbit Polyclonal Antibody

Product data:

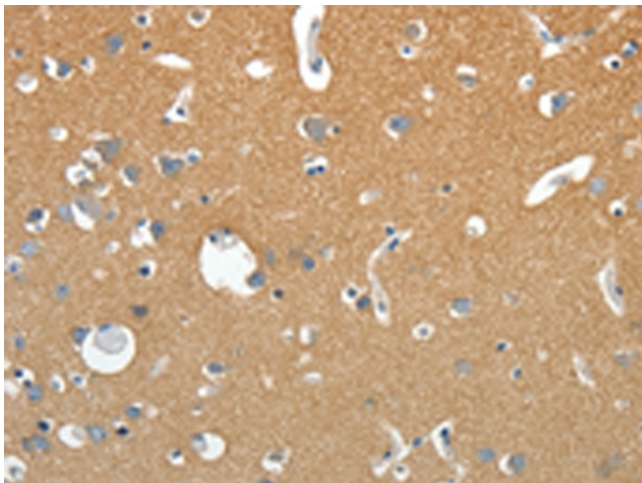
| | |
|-----------------------|-------------------------------------------------------------------------------------------------------------------------------------------------------------------------------------------------------------------------------------------------------------------------------------------------------------------------------------------------------------------------------------------------------------------------|
| Product Type: | Primary Antibodies |
| Applications: | IHC |
| Recommended Dilution: | IHC: 15-50 Positive control: Human brain Predicted cell location: Cytoplasm, Cell membrane |
| Reactivity: | Human, Mouse, Rat |
| Host: | Rabbit |
| Isotype: | IgG |
| Clonality: | Polyclonal |
| Immunogen: | Synthetic peptide corresponding to a region derived from 186-200 amino acids of human somatostatin receptor 4 |
| Formulation: | PBS pH7.3, 0.05% NaN ₃ , 50% glycerol |
| Concentration: | lot specific |
| Purification: | Antigen affinity purification |
| Conjugation: | Unconjugated |
| Storage: | Store at -20°C as received. |
| Stability: | Stable for 12 months from date of receipt. |
| Gene Name: | somatostatin receptor 4 |
| Database Link: | NP_001043 Entrez Gene 20608 Mouse Entrez Gene 25555 Rat Entrez Gene 6754 Human P31391 |
| Background: | Somatostatin acts at many sites to inhibit the release of many hormones and other secretory proteins. The biologic effects of somatostatin are probably mediated by a family of G protein-coupled receptors that are expressed in a tissue-specific manner. SSTR4 is a member of the superfamily of receptors having seven transmembrane segments and is expressed in highest levels in fetal and adult brain and lung. |
| Synonyms: | SS-4-R; SS4-R; SS4R |
| Protein Families: | Druggable Genome, GPCR, Transmembrane |



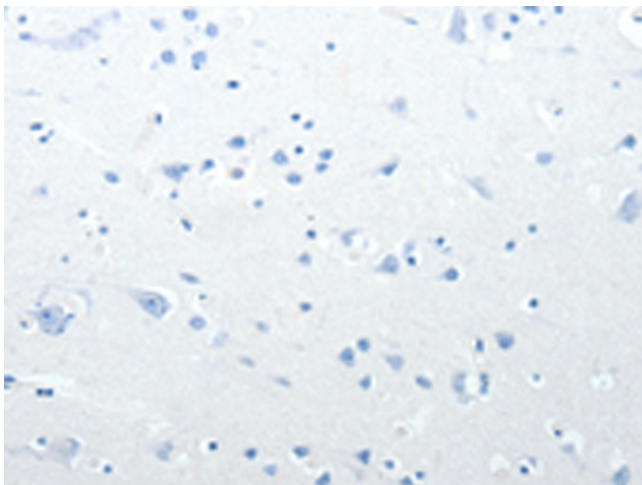
[View online »](#)

Protein Pathways: Neuroactive ligand-receptor interaction

Product images:



Immunohistochemistry of paraffin-embedded Human brain tissue using TA321264 (SSTR4 Antibody) at dilution 1/20 (Original magnification: ×200)



Immunohistochemistry of paraffin-embedded Human brain tissue using TA321264 (SSTR4 Antibody) at dilution 1/20, treated with synthetic peptide. (Original magnification: ×200)