

## Product datasheet for **TA321263**

### Somatostatin Receptor 4 (SSTR4) Rabbit Polyclonal Antibody

#### Product data:

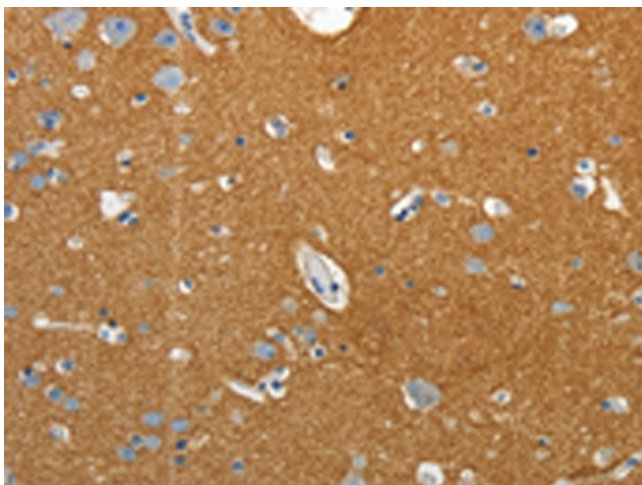
Product Type:	Primary Antibodies
Applications:	IHC
Recommended Dilution:	IHC: 25-100 Positive control: Human brain Predicted cell location: Cytoplasm, Cell membrane
Reactivity:	Human, Mouse, Rat
Host:	Rabbit
Isotype:	IgG
Clonality:	Polyclonal
Immunogen:	Synthetic peptide corresponding to a region derived from 186-200 amino acids of human somatostatin receptor 4
Formulation:	PBS pH7.3, 0.05% NaN <sub>3</sub> , 50% glycerol
Concentration:	lot specific
Purification:	Antigen affinity purification
Conjugation:	Unconjugated
Storage:	Store at -20°C as received.
Stability:	Stable for 12 months from date of receipt.
Gene Name:	somatostatin receptor 4
Database Link:	<a href="#">NP_001043</a> <a href="#">Entrez Gene 20608 Mouse</a> <a href="#">Entrez Gene 25555 Rat</a> <a href="#">Entrez Gene 6754 Human</a> <a href="#">P31391</a>
Background:	Somatostatin acts at many sites to inhibit the release of many hormones and other secretory proteins. The biologic effects of somatostatin are probably mediated by a family of G protein-coupled receptors that are expressed in a tissue-specific manner. SSTR4 is a member of the superfamily of receptors having seven transmembrane segments and is expressed in highest levels in fetal and adult brain and lung.
Synonyms:	SS-4-R; SS4-R; SS4R
Protein Families:	Druggable Genome, GPCR, Transmembrane



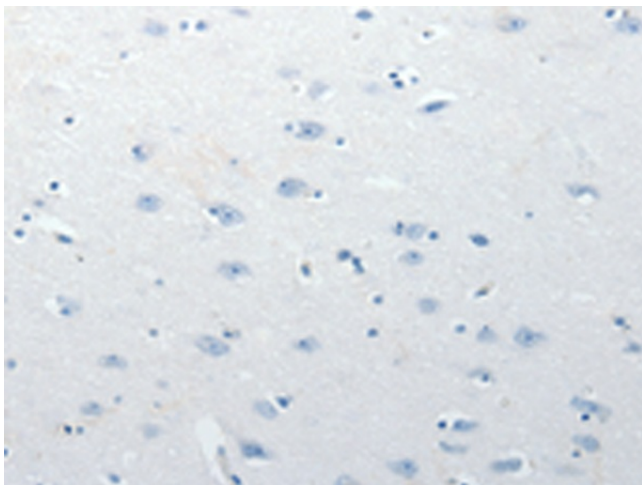
[View online »](#)

Protein Pathways: Neuroactive ligand-receptor interaction

### Product images:



Immunohistochemistry of paraffin-embedded Human brain tissue using TA321263 (SSTR4 Antibody) at dilution 1/25 (Original magnification: ×200)



Immunohistochemistry of paraffin-embedded Human brain tissue using TA321263 (SSTR4 Antibody) at dilution 1/25, treated with synthetic peptide. (Original magnification: ×200)