

Product datasheet for **TA321261**

OPCML Rabbit Polyclonal Antibody

Product data:

Product Type:	Primary Antibodies
Applications:	WB
Recommended Dilution:	WB: 500-2000 WB positive control: Mouse brain tissue
Reactivity:	Human, Mouse, Rat
Host:	Rabbit
Isotype:	IgG
Clonality:	Polyclonal
Immunogen:	Fusion protein corresponding to a region derived from 28-322 amino acids of human opioid binding protein/cell adhesion molecule-like
Formulation:	PBS pH7.3, 0.05% NaN ₃ , 50% glycerol
Concentration:	lot specific
Purification:	Antigen affinity purification
Conjugation:	Unconjugated
Storage:	Store at -20°C as received.
Stability:	Stable for 12 months from date of receipt.
Predicted Protein Size:	38 kDa
Gene Name:	opioid binding protein/cell adhesion molecule-like
Database Link:	NP_001012393 Entrez Gene 116597 Rat Entrez Gene 330908 Mouse Entrez Gene 4978 Human Q14982



[View online »](#)

Background:

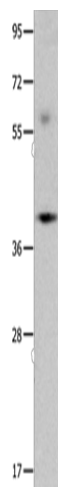
This gene encodes a member of the IGLON subfamily in the immunoglobulin protein superfamily. The encoded protein is localized in the plasma membrane and may have an accessory role in opioid receptor function. This gene has an ortholog in rat and bovine. The opioid binding-cell adhesion molecule encoded by the rat gene binds opioid alkaloids in the presence of acidic lipids; exhibits selectivity for mu ligands and acts as a GPI-anchored protein. Since the encoded protein is highly conserved in species during evolution; it may have a fundamental role in mammalian systems. Two transcript variants encoding different isoforms have been found for this gene.

Synonyms:

IGLON1; OBCAM; OPCM

Protein Families:

Druggable Genome, Transmembrane

Product images:

Gel: 10%SDS-PAGE
Lysate: 40 µg
Lane: Mouse brain tissue
Primary antibody: TA321261 (OPCML Antibody) at dilution 1/400
Secondary antibody: Goat anti rabbit IgG at 1/8000 dilution
Exposure time: 1 minute