

Product datasheet for **TA321260S**

CUL4A Rabbit Polyclonal Antibody

Product data:

Product Type:	Primary Antibodies
Applications:	IHC, WB
Recommended Dilution:	WB: 500-2000 WB positive control: HepG2, Hela, 231 cell and Human fetal brain tissue lysates IHC: 40-200 Positive control: Human esophagus cancer Predicted cell location: Nucleus
Reactivity:	Human, Mouse
Host:	Rabbit
Isotype:	IgG
Clonality:	Polyclonal
Immunogen:	Synthetic peptide corresponding to a region derived from 721-735 amino acids of Human cullin 4A
Formulation:	PBS pH7.3, 0.05% NaN ₃ , 50% glycerol
Purification:	Antigen affinity purification
Conjugation:	Unconjugated
Storage:	Store at -20°C as received.
Stability:	Stable for 12 months from date of receipt.
Predicted Protein Size:	88 kDa
Gene Name:	cullin 4A
Database Link:	NP_001008895 Entrez Gene 99375 Mouse Entrez Gene 8451 Human Q13619



[View online »](#)

Background:

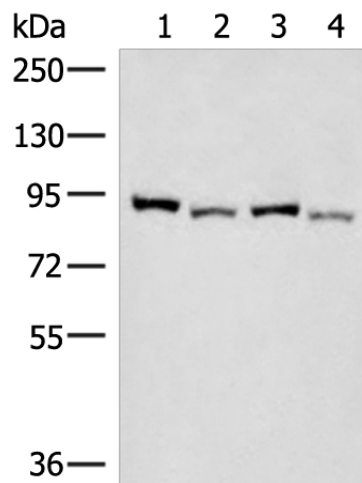
CUL4A is the ubiquitin ligase component of a multimeric complex involved in the degradation of DNA damage-response proteins. Core component of multiple cullin-RING-based E3 ubiquitin-protein ligase complexes which mediate the ubiquitination and subsequent proteasomal degradation of target proteins. As a scaffold protein may contribute to catalysis through positioning of the substrate and the ubiquitin-conjugating enzyme. The E3 ubiquitin-protein ligase activity of the complex is dependent on the neddylation of the cullin subunit and is inhibited by the association of the deneddylated cullin subunit with TIP120A/CAND1. The functional specificity of the E3 ubiquitin-protein ligase complex depends on the variable substrate recognition component. DCX(DET1-COP1) directs ubiquitination of JUN. DCX(DDB2) directs ubiquitination of XPC. In association with RBX1; DDB1 and DDB2 is required for histone H3 and histone H4 ubiquitination in response to ultraviolet and may be important for subsequent DNA repair. DCX(DTL) plays a role in PCNA-dependent polyubiquitination of CDT1 and MDM2-dependent ubiquitination of TP53 in response to radiation-induced DNA damage and during DNA replication.

Synonyms:

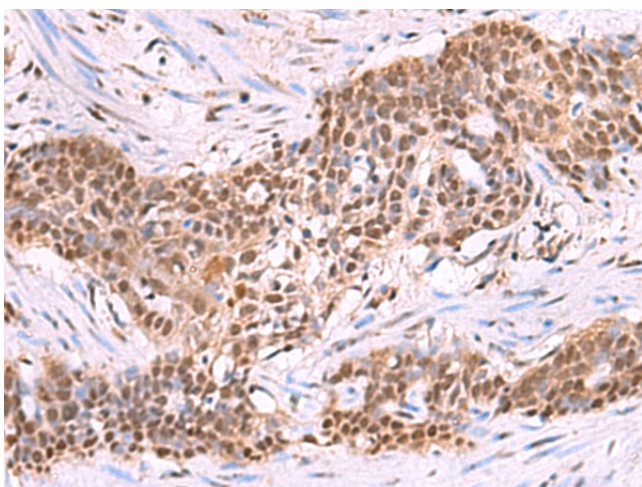
cullin 4A; OTTHUMP00000018753; OTTHUMP00000018754

Protein Pathways:

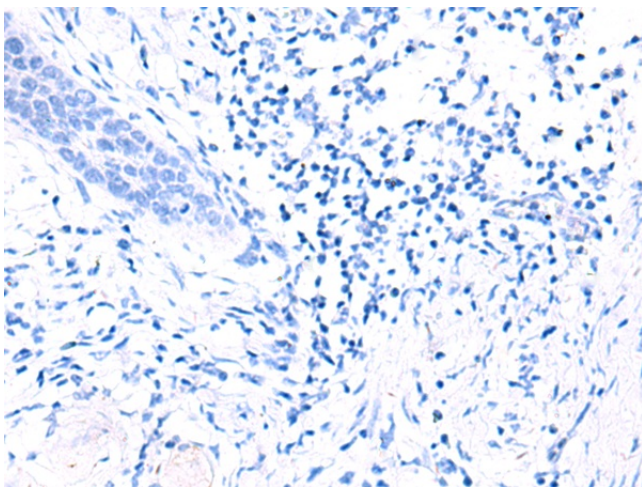
Nucleotide excision repair, Ubiquitin mediated proteolysis

Product images:

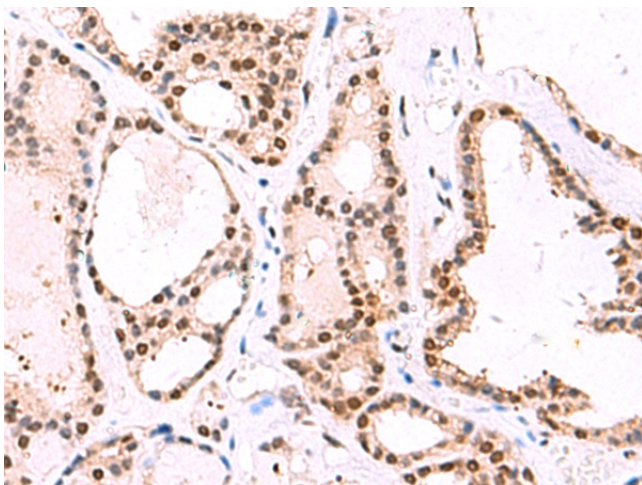
Gel: 6%SDS-PAGE
Lysate: 40 µg
Lane 1-4: HepG2
Hela
231 cell and Human fetal brain tissue lysates
Primary antibody: [TA321260] (CUL4A Antibody)
at dilution 1/500
Secondary antibody: Goat anti rabbit IgG at
1/8000 dilution
Exposure time: 3 seconds



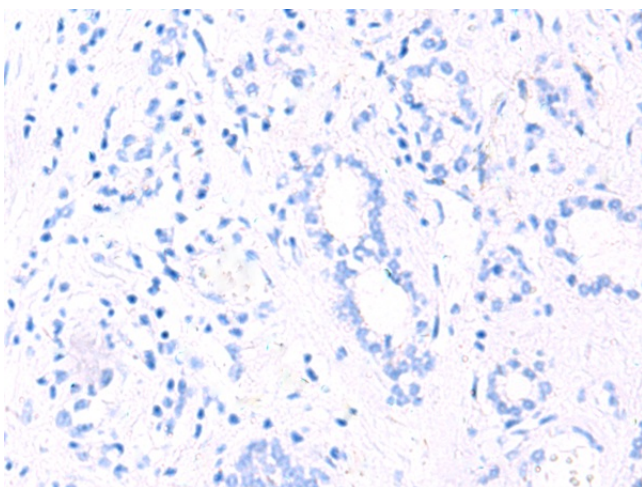
Immunohistochemistry of paraffin-embedded Human esophagus cancer tissue using [TA321260] (CUL4A Antibody) at dilution 1/45 (Original magnification: $\times 200$)



Immunohistochemistry of paraffin-embedded Human esophagus cancer tissue using [TA321260] (CUL4A Antibody) at dilution 1/45, treated with synthetic peptide. (Original magnification: $\times 200$)



Immunohistochemistry of paraffin-embedded Human thyroid cancer tissue using [TA321260] (CUL4A Antibody) at dilution 1/45 (Original magnification: $\times 200$)



Immunohistochemistry of paraffin-embedded Human thyroid cancer tissue using [TA321260] (CUL4A Antibody) at dilution 1/45, treated with synthetic peptide. (Original magnification: ×200)