

Product datasheet for **TA321259S**

CUL4A Rabbit Polyclonal Antibody

Product data:

Product Type:	Primary Antibodies
Applications:	WB
Recommended Dilution:	WB: 500-2000 WB positive control: Human fetal muscle and fetal brain tissue, Hela cells
Reactivity:	Human, Mouse
Host:	Rabbit
Isotype:	IgG
Clonality:	Polyclonal
Immunogen:	Synthetic peptide corresponding to a region derived from 720-734 amino acids of Human cullin 4A
Formulation:	PBS pH7.3, 0.05% NaN ₃ , 50% glycerol
Purification:	Antigen affinity purification
Conjugation:	Unconjugated
Storage:	Store at -20°C as received.
Stability:	Stable for 12 months from date of receipt.
Predicted Protein Size:	88 kDa
Gene Name:	cullin 4A
Database Link:	NP_001008895 Entrez Gene 99375 Mouse Entrez Gene 8451 Human Q13619



[View online »](#)

Background:

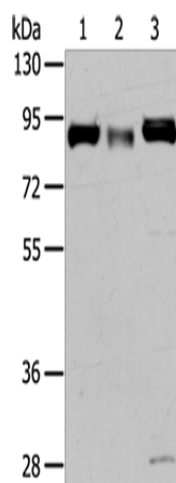
CUL4A is the ubiquitin ligase component of a multimeric complex involved in the degradation of DNA damage-response proteins. Core component of multiple cullin-RING-based E3 ubiquitin-protein ligase complexes which mediate the ubiquitination and subsequent proteasomal degradation of target proteins. As a scaffold protein may contribute to catalysis through positioning of the substrate and the ubiquitin-conjugating enzyme. The E3 ubiquitin-protein ligase activity of the complex is dependent on the neddylation of the cullin subunit and is inhibited by the association of the deneddylated cullin subunit with TIP120A/CAND1. The functional specificity of the E3 ubiquitin-protein ligase complex depends on the variable substrate recognition component. DCX(DET1-COP1) directs ubiquitination of JUN. DCX(DDB2) directs ubiquitination of XPC. In association with RBX1; DDB1 and DDB2 is required for histone H3 and histone H4 ubiquitination in response to ultraviolet and may be important for subsequent DNA repair. DCX(DTL) plays a role in PCNA-dependent polyubiquitination of CDT1 and MDM2-dependent ubiquitination of TP53 in response to radiation-induced DNA damage and during DNA replication.

Synonyms:

cullin 4A; OTTHUMP00000018753; OTTHUMP00000018754

Protein Pathways:

Nucleotide excision repair, Ubiquitin mediated proteolysis

Product images:

Gel: 6%SDS-PAGE

Lysate: 40 µg

Lane 1-3: Human fetal muscle tissue

Human fetal brain tissue

HeLa cells

Primary antibody: [TA321259] (CUL4A Antibody)
at dilution 1/325

Secondary antibody: Goat anti rabbit IgG at
1/8000 dilution

Exposure time: 3 minutes