

## Product datasheet for **TA321255**

### SMAD2 Rabbit Polyclonal Antibody

#### Product data:

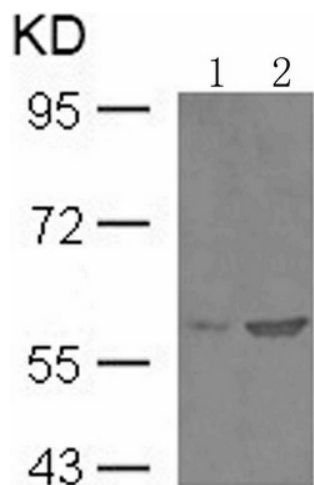
Product Type:	Primary Antibodies
Applications:	WB
Recommended Dilution:	WB: 1:500-1000
Reactivity:	Human, Mouse, Rat
Modifications:	Phospho-specific
Host:	Rabbit
Isotype:	IgG
Clonality:	Polyclonal
Immunogen:	Peptide sequence around phosphorylation site of serine 467 (C-S-S-M-S(p)) derived from Human Smad2.
Formulation:	PBS pH7.3, 0.05% NaN <sub>3</sub> , 50% glycerol
Concentration:	lot specific
Purification:	Antigen affinity purification
Conjugation:	Unconjugated
Storage:	Store at -20°C as received.
Stability:	Stable for 12 months from date of receipt.
Predicted Protein Size:	52 kDa
Gene Name:	SMAD family member 2
Database Link:	<a href="#">NP_005892</a> <a href="#">Entrez Gene 17126 Mouse</a> <a href="#">Entrez Gene 29357 Rat</a> <a href="#">Entrez Gene 4087 Human</a> <a href="#">Q15796</a>
Background:	Transcriptional modulator activated by TGF-beta and activin type 1 receptor kinase. SMAD2 is a receptor-regulated SMAD (R-SMAD). May act as a tumor suppressor in colorectal carcinoma.
Synonyms:	hMAD-2; hSMAD2; JV18; JV18-1; MADH2; MADR2
Protein Families:	Cancer stem cells, Druggable Genome, Embryonic stem cells, ES Cell Differentiation/IPS, Stem cell relevant signaling - JAK/STAT signaling pathway, Stem cell relevant signaling - TGFb/BMP signaling pathway, Transcription Factors



[View online »](#)

**Protein Pathways:** Adherens junction, Cell cycle, Colorectal cancer, Pancreatic cancer, Pathways in cancer, TGF-beta signaling pathway, Wnt signaling pathway

**Product images:**



Predicted band size: 52 kDa. Positive control: HeLa cells untreated or treated with PMA lysate. Recommended dilution: 1/ 500-1000. (Gel: 10%SDS-PAGE Lane 1: HeLa cells untreated with PMA lysate Lane 2: HeLa cells treated with PMA lysate Lysates: 30 ug per lane Primary antibody: 1/500 dilution Secondary antibody: Goat anti Rabbit IgG - H&L (HRP) at 1/10000 dilution Exposure time: 1 minute)