

## Product datasheet for **TA321254**

### Annexin A2 (ANXA2) Rabbit Polyclonal Antibody

#### Product data:

Product Type:	Primary Antibodies
Applications:	IHC, WB
Recommended Dilution:	WB: 500-2000 WB positive control: 293T and HepG2 cells IHC: 30-150 Positive control: Human lung cancer Predicted cell location: Cytoplasm
Reactivity:	Human, Mouse, Rat
Host:	Rabbit
Isotype:	IgG
Clonality:	Polyclonal
Immunogen:	Full length fusion protein
Formulation:	PBS pH7.3, 0.05% NaN <sub>3</sub> , 50% glycerol
Concentration:	lot specific
Purification:	Antigen affinity purification
Conjugation:	Unconjugated
Storage:	Store at -20°C as received.
Stability:	Stable for 12 months from date of receipt.
Predicted Protein Size:	38 kDa
Gene Name:	annexin A2
Database Link:	<a href="#">NP_001002857</a> <a href="#">Entrez Gene 12306 Mouse</a> <a href="#">Entrez Gene 56611 Rat</a> <a href="#">Entrez Gene 302 Human</a> <a href="#">P07355</a>



[View online »](#)

**Background:**

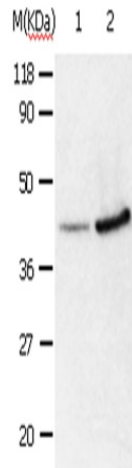
This gene encodes a member of the annexin family. Members of this calcium-dependent phospholipid-binding protein family play a role in the regulation of cellular growth and in signal transduction pathways. This protein functions as an autocrine factor which heightens osteoclast formation and bone resorption. This gene has three pseudogenes located on chromosomes 4; 9 and 10; respectively. Multiple alternatively spliced transcript variants encoding different isoforms have been found for this gene.

**Synonyms:**

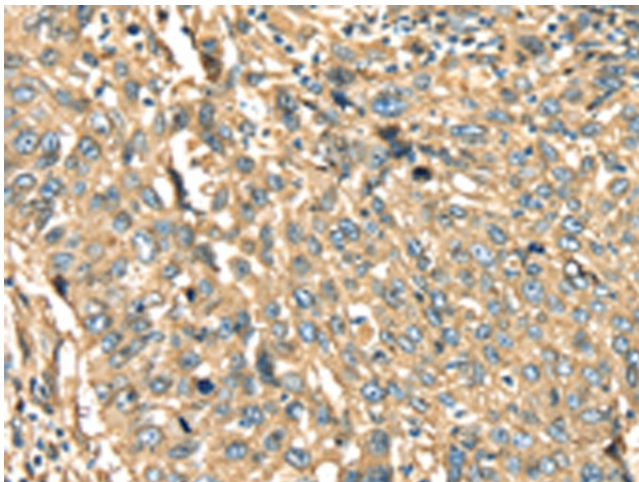
ANX2; ANX2L4; CAL1H; HEL-S-270; LIP2; LPC2; LPC2D; P36; PAP-IV

**Protein Families:**

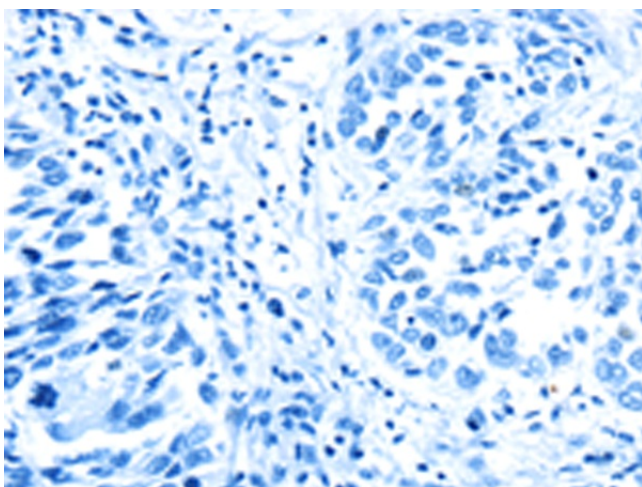
Druggable Genome, Secreted Protein, Stem cell - Pluripotency

**Product images:**

Gel: 8%SDS-PAGE  
Lysate: 30 µg  
Lane 1-2: 293T cells  
HepG2 cells  
Primary antibody: TA321254 (ANXA2 Antibody) at dilution 1/540  
Secondary antibody: Goat anti rabbit IgG at 1/8000 dilution  
Exposure time: 30 seconds



Immunohistochemistry of paraffin-embedded Human lung cancer tissue using TA321254 (ANXA2 Antibody) at dilution 1/40 (Original magnification: x200)



Immunohistochemistry of paraffin-embedded Human lung cancer tissue using TA321254 (ANXA2 Antibody) at dilution 1/40, treated with fusion protein. (Original magnification: ×200)