

## Product datasheet for **TA321251**

### ABH2 (ALKBH2) Rabbit Polyclonal Antibody

#### Product data:

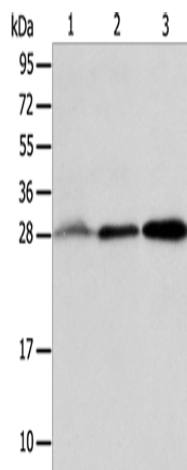
Product Type:	Primary Antibodies
Applications:	WB
Recommended Dilution:	WB: 500-2000 WB positive control: Human fetal liver and seminoma tissue, RAW264.7 cells
Reactivity:	Human, Mouse
Host:	Rabbit
Isotype:	IgG
Clonality:	Polyclonal
Immunogen:	Full length fusion protein
Formulation:	PBS pH7.3, 0.05% NaN <sub>3</sub> , 50% glycerol
Concentration:	lot specific
Purification:	Antigen affinity purification
Conjugation:	Unconjugated
Storage:	Store at -20°C as received.
Stability:	Stable for 12 months from date of receipt.
Predicted Protein Size:	29 kDa
Gene Name:	alkB homolog 2, alpha-ketoglutarate-dependent dioxygenase
Database Link:	<a href="#">NP_001001655</a> <a href="#">Entrez Gene 231642 Mouse</a> <a href="#">Entrez Gene 121642 Human</a> <a href="#">Q6NS38</a>
Background:	The Escherichia coli AlkB protein protects against the cytotoxicity of methylating agents by repair of the specific DNA lesions generated in single-stranded DNA. ALKBH2 and ALKBH3 are E. coli AlkB homologs that catalyze the removal of 1-methyladenine and 3-methylcytosine. Dioxygenase that repairs alkylated DNA and RNA containing 1-methyladenine and 3-methylcytosine by oxidative demethylation. Can also repair alkylated DNA containing 1-ethenoadenine (in vitro). Has strong preference for double-stranded DNA. Has low efficiency with single-stranded substrates. Requires molecular oxygen; alpha-ketoglutarate and iron.
Synonyms:	ABH2



[View online »](#)

Protein Families: Druggable Genome

### Product images:



Gel: 12%SDS-PAGE  
Lysate: 40 µg  
Lane 1-3: Human fetal liver tissue  
Human seminoma tissue  
RAW264.7 cells  
Primary antibody: TA321251 (ALKBH2 Antibody)  
at dilution 1/800  
Secondary antibody: Goat anti rabbit IgG at  
1/8000 dilution  
Exposure time: 2 minutes