

Product datasheet for **TA321250**

Retinoic Acid Receptor alpha (RARA) Rabbit Polyclonal Antibody

Product data:

Product Type:	Primary Antibodies
Applications:	IHC, WB
Recommended Dilution:	ELISA: 1:2000-5000, WB: 1:500-2000, IHC: 1:50-200
Reactivity:	Human, Mouse, Rat
Host:	Rabbit
Isotype:	IgG
Clonality:	Polyclonal
Immunogen:	Fusion protein corresponding to a region derived from 200-419 amino acids of human retinoic acid receptor, alpha
Formulation:	PBS pH7.3, 0.05% NaN ₃ , 50% glycerol
Concentration:	lot specific
Purification:	Antigen affinity purification
Conjugation:	Unconjugated
Storage:	Store at -20°C as received.
Stability:	Stable for 12 months from date of receipt.
Predicted Protein Size:	51 kDa
Gene Name:	retinoic acid receptor alpha
Database Link:	NP_000955 Entrez Gene 19401 Mouse Entrez Gene 24705 Rat Entrez Gene 5914 Human P10276
Background:	This gene represents a nuclear retinoic acid receptor. The encoded protein; retinoic acid receptor alpha; regulates transcription in a ligand-dependent manner. This gene has been implicated in regulation of development; differentiation; apoptosis; granulopoiesis; and transcription of clock genes. Translocations between this locus and several other loci have been associated with acute promyelocytic leukemia. Alternatively spliced transcript variants have been found for this locus.
Synonyms:	NR1B1; RAR

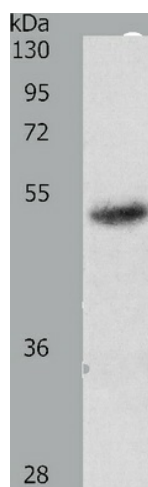


[View online »](#)

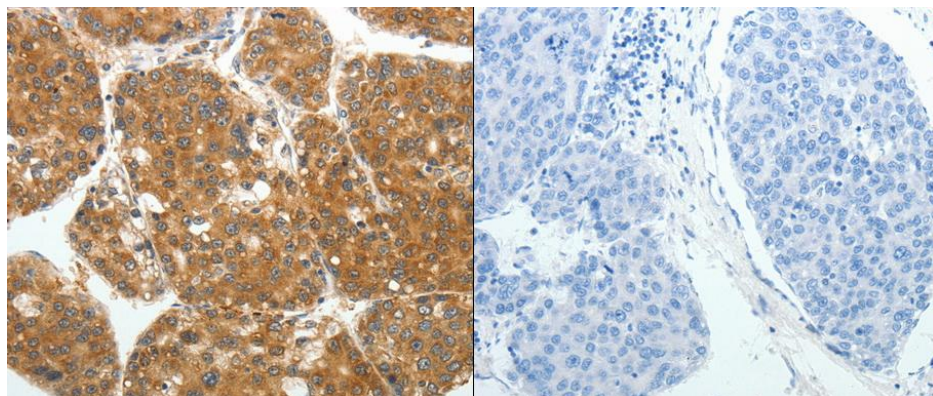
Protein Families: Druggable Genome, Nuclear Hormone Receptor, Transcription Factors

Protein Pathways: Acute myeloid leukemia, Pathways in cancer

Product images:



Predicted band size: 51 kDa. Positive control: Human fetal lung tissue lysate. Recommended dilution: 1/500-2000. (Gel: 10%SDS-PAGE Lysate: 40 ug per lane Primary antibody: 1/700 dilution Secondary antibody: Goat anti Rabbit IgG - H&L (HRP) at 1/10000 dilution Exposure time: 1 minute)



Predicted cell location: Cytoplasm. Positive control: Human liver cancer tissue. Recommended dilution: 1/50-200 The image on the left is immunohistochemistry of paraffin-embedded human liver cancer tissue using RARA antibody at dilution 1/40, on the right is treated with the fusion protein. (Original magnification:x200)