

Product datasheet for **TA321248**

PAF Receptor (PTAFR) Rabbit Polyclonal Antibody

Product data:

Product Type:	Primary Antibodies
Applications:	IHC
Recommended Dilution:	IHC: 25-100 Positive control: Human gastric cancer Predicted cell location: Cytoplasm
Reactivity:	Human
Host:	Rabbit
Isotype:	IgG
Clonality:	Polyclonal
Immunogen:	Synthetic peptide corresponding to a region derived from 1-14 amino acids of Human platelet-activating factor receptor
Formulation:	PBS pH7.3, 0.05% NaN ₃ , 50% glycerol
Concentration:	lot specific
Purification:	Antigen affinity purification
Conjugation:	Unconjugated
Storage:	Store at -20°C as received.
Stability:	Stable for 12 months from date of receipt.
Gene Name:	platelet activating factor receptor
Database Link:	NP_000943 Entrez Gene 5724 Human P25105



[View online »](#)

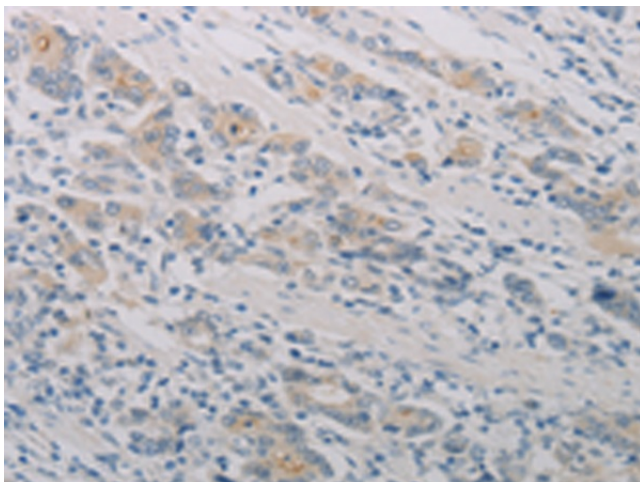
Background: This gene encodes a seven-transmembrane G-protein-coupled receptor for platelet-activating factor (PAF) that localizes to lipid rafts and/or caveolae in the cell membrane. PAF (1-0-alkyl-2-acetyl-sn-glycero-3-phosphorylcholine) is a phospholipid that plays a significant role in oncogenic transformation; tumor growth; angiogenesis; metastasis; and pro-inflammatory processes. Binding of PAF to the PAF-receptor (PAFR) stimulates numerous signal transduction pathways including phospholipase C; D; A2; mitogen-activated protein kinases (MAPKs); and the phosphatidylinositol-calcium second messenger system. Following PAFR activation; cells become rapidly desensitized and this refractory state is dependent on PAFR phosphorylation; internalization; and down-regulation. Alternative splicing results in multiple transcript variants.

Synonyms: PAFR

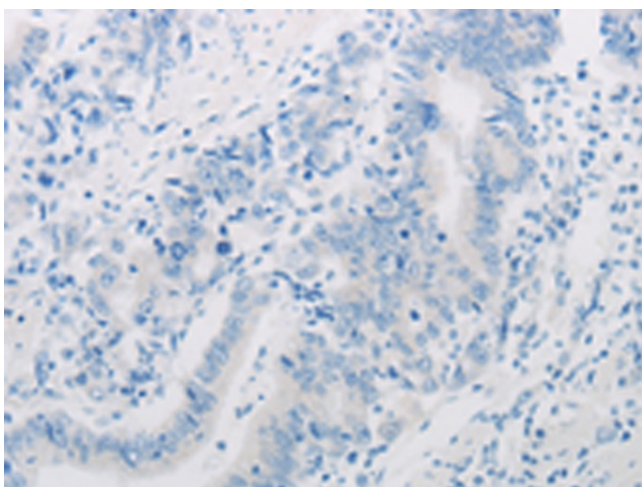
Protein Families: Druggable Genome, GPCR, Transmembrane

Protein Pathways: Calcium signaling pathway, Neuroactive ligand-receptor interaction

Product images:



Immunohistochemistry of paraffin-embedded Human gastric cancer tissue using TA321248 (PTAFR Antibody) at dilution 1/70 (Original magnification: $\times 200$)



Immunohistochemistry of paraffin-embedded Human gastric cancer tissue using TA321248 (PTAFR Antibody) at dilution 1/70, treated with synthetic peptide. (Original magnification: ×200)