

## Product datasheet for **TA321247**

### PTGS1 Rabbit Polyclonal Antibody

#### Product data:

Product Type:	Primary Antibodies
Applications:	IHC, WB
Recommended Dilution:	WB: 500-2000 WB positive control: Hela cells IHC: 25-100 Positive control: Human breast cancer Predicted cell location: Cytoplasm
Reactivity:	Human
Host:	Rabbit
Isotype:	IgG
Clonality:	Polyclonal
Immunogen:	Synthetic peptide corresponding to a region derived from 586-599 amino acids of Human prostaglandin-endoperoxide synthase 1 (prostaglandin G/H synthase and cyclooxygenase)
Formulation:	PBS pH7.3, 0.05% NaN <sub>3</sub> , 50% glycerol
Concentration:	lot specific
Purification:	Antigen affinity purification
Conjugation:	Unconjugated
Storage:	Store at -20°C as received.
Stability:	Stable for 12 months from date of receipt.
Gene Name:	prostaglandin-endoperoxide synthase 1
Database Link:	<a href="#">NP_542158</a> <a href="#">Entrez Gene 5742 Human</a> <a href="#">P23219</a>



[View online »](#)

**Background:**

Cyclooxygenase-1 (COX-1); also known as prostaglandin G/H synthase 1; prostaglandin-endoperoxide synthase 1 or prostaglandin H2 synthase 1; is an enzyme that in humans is encoded by the PTGS1 gene. This is one of two genes encoding similar enzymes that catalyze the conversion of arachidate to prostaglandin. The encoded protein regulates angiogenesis in endothelial cells; and is inhibited by nonsteroidal anti-inflammatory drugs such as aspirin. The protein may promote cell proliferation during tumor progression. Alternative splicing results in multiple transcript variants.

**Synonyms:**

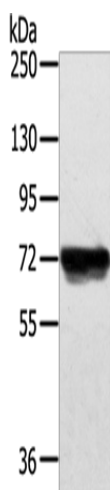
COX1; COX3; HS; PCOX1; PES-1; PGG; PGHS-1; PGHS1; PHS1; PTGHS

**Protein Families:**

Druggable Genome, Transmembrane

**Protein Pathways:**

Arachidonic acid metabolism, Metabolic pathways

**Product images:**

Gel: 6%SDS-PAGE

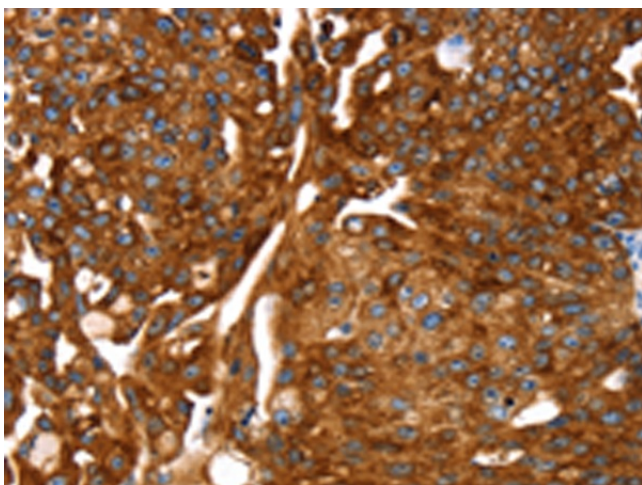
Lysate: 40 µg

Lane: HeLa cells

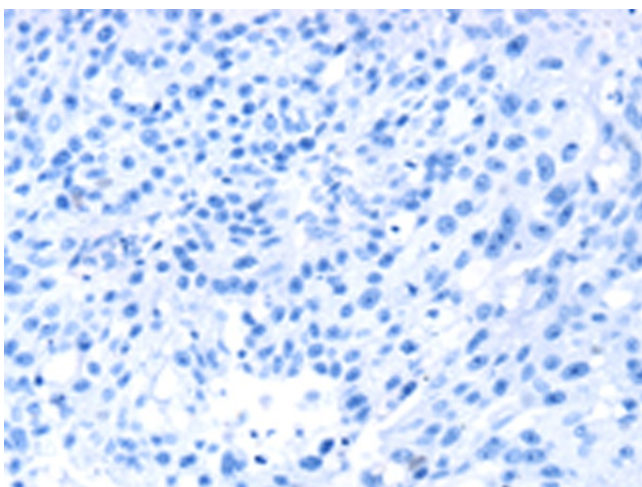
Primary antibody: TA321247 (PTGS1 Antibody) at dilution 1/200

Secondary antibody: Goat anti rabbit IgG at 1/8000 dilution

Exposure time: 20 seconds



Immunohistochemistry of paraffin-embedded Human breast cancer tissue using TA321247 (PTGS1 Antibody) at dilution 1/20 (Original magnification: ×200)



Immunohistochemistry of paraffin-embedded Human breast cancer tissue using TA321247 (PTGS1 Antibody) at dilution 1/20, treated with synthetic peptide. (Original magnification:  $\times 200$ )