

## Product datasheet for **TA321245**

### PTGS1 Rabbit Polyclonal Antibody

#### Product data:

Product Type:	Primary Antibodies
Applications:	WB
Recommended Dilution:	ELISA: 1:200-1000, WB: 1:100-500
Reactivity:	Human, Mouse
Host:	Rabbit
Isotype:	IgG
Clonality:	Polyclonal
Immunogen:	Synthetic peptide (KLH-coupled) derived from human PTGS1
Formulation:	PBS pH7.3, 0.05% NaN <sub>3</sub> , 50% glycerol
Concentration:	lot specific
Purification:	Antigen affinity purification
Conjugation:	Unconjugated
Storage:	Store at -20°C as received.
Stability:	Stable for 12 months from date of receipt.
Predicted Protein Size:	69 kDa
Gene Name:	prostaglandin-endoperoxide synthase 1
Database Link:	<a href="#">NP_000953</a> <a href="#">Entrez Gene 19224 Mouse</a> <a href="#">Entrez Gene 5742 Human</a> <a href="#">P23219</a>

**Background:** This is one of two genes encoding similar enzymes that catalyze the conversion of arachinodate to prostaglandin. The encoded protein regulates angiogenesis in endothelial cells, and is inhibited by nonsteroidal anti-inflammatory drugs such as aspirin. The protein may promote cell proliferation during tumor progression. Alternative splicing results in multiple transcript variants.

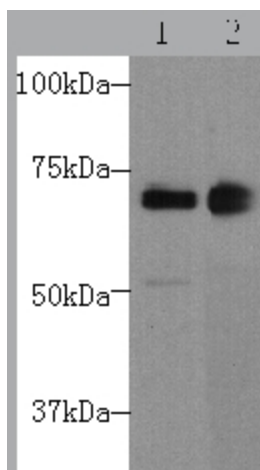
**Synonyms:** COX1; COX3; HS; PCOX1; PES-1; PGG; PGHS-1; PGHS1; PHS1; PTGHS

**Protein Families:** Druggable Genome, Transmembrane

**Protein Pathways:** Arachidonic acid metabolism, Metabolic pathways



[View online »](#)

**Product images:**

Predicted band size: 69 kDa. Positive control: NIH/3T3 and 293T cell lysate. Recommended dilution: 1/ 100-500. (Gel: 8%SDS-PAGE Lane 1: NIH/3T3 cell lysate Lane 2: 293T cell lysate Lysates: 30 ug per lane Primary antibody: 1/200 dilution Secondary antibody: Goat anti Rabbit IgG - H&L (HRP) at 1/10000 dilution Exposure time: 1 minute)