

Product datasheet for **TA321244S**

EP4 (PTGER4) Rabbit Polyclonal Antibody

Product data:

Product Type:	Primary Antibodies
Applications:	WB
Recommended Dilution:	WB: 500-2000 WB positive control: LoVo cells
Reactivity:	Human
Host:	Rabbit
Isotype:	IgG
Clonality:	Polyclonal
Immunogen:	Synthetic peptide corresponding to a region derived from 458-473 amino acids of Human prostaglandin E receptor 4 (subtype EP4)
Formulation:	PBS pH7.3, 0.05% NaN ₃ , 50% glycerol
Purification:	Antigen affinity purification
Conjugation:	Unconjugated
Storage:	Store at -20°C as received.
Stability:	Stable for 12 months from date of receipt.
Predicted Protein Size:	53 kDa
Gene Name:	prostaglandin E receptor 4
Database Link:	NP_000949 Entrez Gene 5734 Human P35408
Background:	The protein encoded by this gene is a member of the G-protein coupled receptor family. This protein is one of four receptors identified for prostaglandin E ₂ (PGE ₂). This receptor can activate T-cell factor signaling. It has been shown to mediate PGE ₂ induced expression of early growth response 1 (EGR1); regulate the level and stability of cyclooxygenase-2 mRNA; and lead to the phosphorylation of glycogen synthase kinase-3. Knockout studies in mice suggest that this receptor may be involved in the neonatal adaptation of circulatory system; osteoporosis; as well as initiation of skin immune responses.
Synonyms:	EP4; EP4R

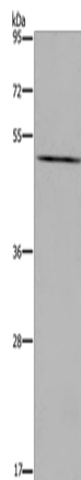


[View online »](#)

Protein Families: Druggable Genome, GPCR, Transmembrane

Protein Pathways: Neuroactive ligand-receptor interaction

Product images:



Gel: 8%SDS-PAGE

Lysate: 40 μ g

Lane: LoVo cells

Primary antibody: [TA321244] (PTGER4 Antibody)
at dilution 1/600

Secondary antibody: Goat anti rabbit IgG at
1/8000 dilution

Exposure time: 1 minute