

Product datasheet for **TA321243**

Prostaglandin D Synthase (PTGDS) Rabbit Polyclonal Antibody

Product data:

| | |
|-----------------------|--|
| Product Type: | Primary Antibodies |
| Applications: | IHC, WB |
| Recommended Dilution: | WB: 1000-5000 WB positive control: Mouse eye tissue lysate IHC: 100-300 Positive control: Human prostate cancer Predicted cell location: Cytoplasm |
| Reactivity: | Human, Mouse |
| Host: | Rabbit |
| Isotype: | IgG |
| Clonality: | Polyclonal |
| Immunogen: | Fusion protein corresponding to a region derived from 23-190 amino acids of human prostaglandin D2 synthase 21kDa (brain) |
| Formulation: | PBS pH7.3, 0.05% NaN ₃ , 50% glycerol |
| Concentration: | lot specific |
| Purification: | Antigen affinity purification |
| Conjugation: | Unconjugated |
| Storage: | Store at -20°C as received. |
| Stability: | Stable for 12 months from date of receipt. |
| Gene Name: | prostaglandin D2 synthase |
| Database Link: | NP_000945 Entrez Gene 19215 Mouse Entrez Gene 5730 Human P41222 |



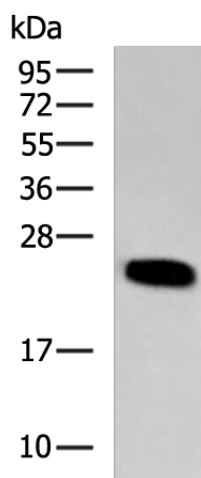
[View online »](#)

Background: The protein encoded by this gene is a glutathione-independent prostaglandin D synthase that catalyzes the conversion of prostaglandin H₂ (PGH₂) to prostaglandin D₂ (PGD₂). PGD₂ functions as a neuromodulator as well as a trophic factor in the central nervous system. PGD₂ is also involved in smooth muscle contraction/relaxation and is a potent inhibitor of platelet aggregation. This gene is preferentially expressed in brain. Studies with transgenic mice overexpressing this gene suggest that this gene may be also involved in the regulation of non-rapid eye movement sleep.?

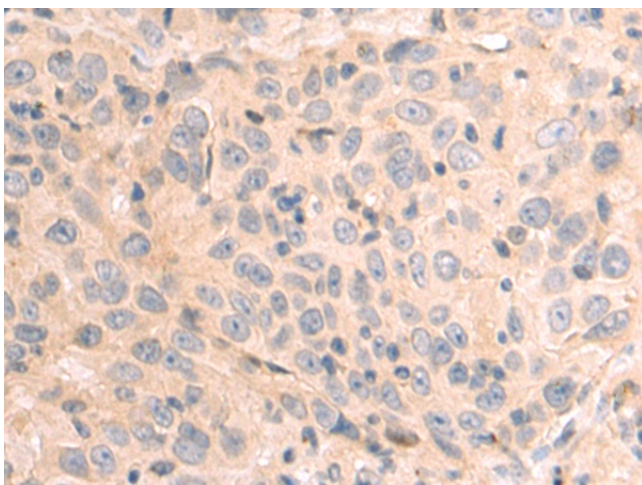
Synonyms: L-PGDS; LPGDS; PDS; PGD2; PGDS; PGDS2

Protein Pathways: Arachidonic acid metabolism, Metabolic pathways

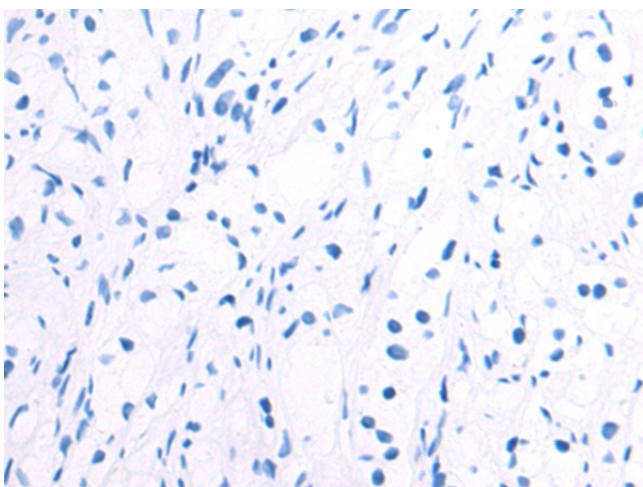
Product images:



Gel: 12%SDS-PAGE
Lysate: 40 µg
Lane: Mouse eye tissue lysate
Primary antibody: TA321243 (PTGDS Antibody) at dilution 1/1300
Secondary antibody: Goat anti rabbit IgG at 1/5000 dilution
Exposure time: 1 minute



Immunohistochemistry of paraffin-embedded Human prostate cancer tissue using TA321243 (PTGDS Antibody) at dilution 1/100 (Original magnification: ×200)



Immunohistochemistry of paraffin-embedded Human prostate cancer tissue using TA321243 (PTGDS Antibody) at dilution 1/100, treated with fusion protein. (Original magnification: ×200)