

## Product datasheet for **TA321242S**

### Prostaglandin D Synthase (PTGDS) Rabbit Polyclonal Antibody

#### Product data:

|                         |   |
|-------------------------|---|
| Product Type:           | Primary Antibodies  |
| Applications:           | IHC, WB   |
| Recommended Dilution:   | WB: 500-2000<br>WB positive control: Hela and Raji cell lysates<br>IHC: 50-200<br>Positive control: Human cervical cancer<br>Predicted cell location: Cytoplasm and Nucleus |
| Reactivity:             | Human, Mouse  |
| Host:                   | Rabbit  |
| Isotype:                | IgG   |
| Clonality:              | Polyclonal  |
| Immunogen:              | Fusion protein corresponding to a region derived from 64-325 amino acids of human prostaglandin D2 synthase 21kDa (brain)prostaglandin D2 synthase 21kDa (brain)            |
| Formulation:            | PBS pH7.3, 0.05% NaN <sub>3</sub> , 50% glycerol  |
| Purification:           | Antigen affinity purification   |
| Conjugation:            | Unconjugated  |
| Storage:                | Store at -20°C as received.   |
| Stability:              | Stable for 12 months from date of receipt.  |
| Predicted Protein Size: | 21 kDa  |
| Gene Name:              | prostaglandin D2 synthase   |
| Database Link:          | <a href="#">NP_000945</a><br><a href="#">Entrez Gene 19215 Mouse</a> <a href="#">Entrez Gene 5730 Human</a><br><a href="#">P41222</a>                                       |



[View online »](#)

**Background:**

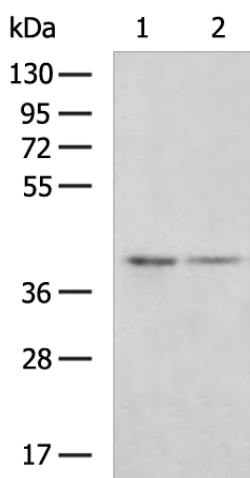
The protein encoded by this gene is a glutathione-independent prostaglandin D synthase that catalyzes the conversion of prostaglandin H<sub>2</sub> (PGH<sub>2</sub>) to postaglandin D<sub>2</sub> (PGD<sub>2</sub>). PGD<sub>2</sub> functions as a neuromodulator as well as a trophic factor in the central nervous system. PGD<sub>2</sub> is also involved in smooth muscle contraction/relaxation and is a potent inhibitor of platelet aggregation. This gene is preferentially expressed in brain. Studies with transgenic mice overexpressing this gene suggest that this gene may be also involved in the regulation of non-rapid eye movement sleep.

**Synonyms:**

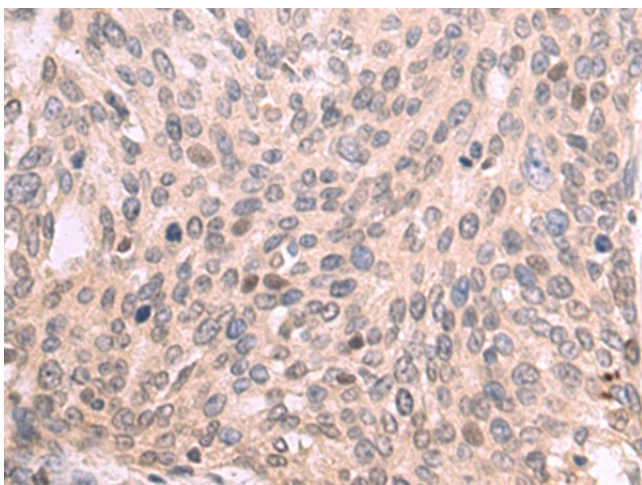
L-PGDS; LPGDS; PDS; PGD2; PGDS; PGDS2

**Protein Pathways:**

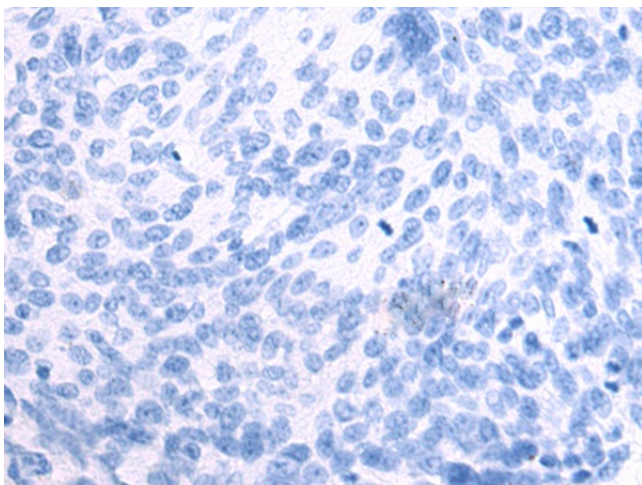
Arachidonic acid metabolism, Metabolic pathways

**Product images:**


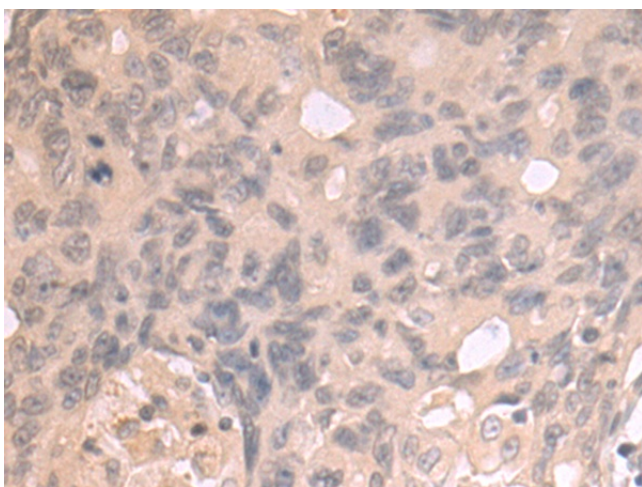
Gel: 8%SDS-PAGE  
 Lysate: 40 µg  
 Lane 1-2: Hela and Raji cell lysates  
 Primary antibody: [TA321242] (MAP2K3 Antibody) at dilution 1/550  
 Secondary antibody: Goat anti rabbit IgG at 1/5000 dilution  
 Exposure time: 10 seconds



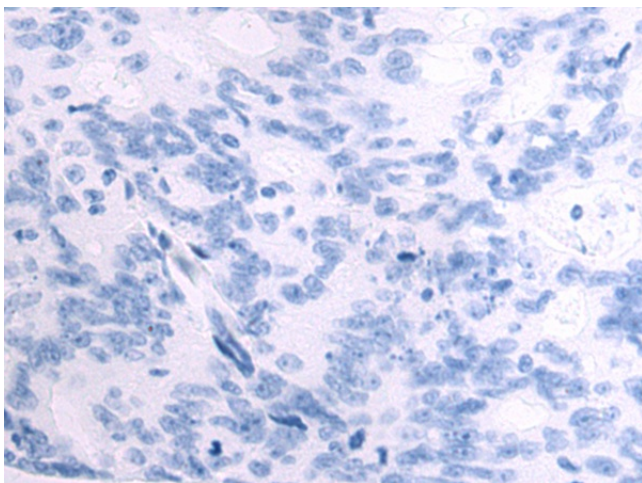
Immunohistochemistry of paraffin-embedded Human cervical cancer tissue using [TA321242] (MAP2K3 Antibody) at dilution 1/80 (Original magnification: ×200)



Immunohistochemistry of paraffin-embedded Human cervical cancer tissue using [TA321242] (MAP2K3 Antibody) at dilution 1/80, treated with fusion protein. (Original magnification: ×200)



Immunohistochemistry of paraffin-embedded Human colorectal cancer tissue using [TA321242] (MAP2K3 Antibody) at dilution 1/80 (Original magnification: ×200)



Immunohistochemistry of paraffin-embedded Human colorectal cancer tissue using [TA321242] (MAP2K3 Antibody) at dilution 1/80, treated with fusion protein. (Original magnification: ×200)