

Product datasheet for **TA321240S**

PCB (PC) Rabbit Polyclonal Antibody

Product data:

Product Type:	Primary Antibodies
Applications:	WB
Recommended Dilution:	WB: 200-1000 WB positive control: Hela cells and human liver cancer tissue
Reactivity:	Human, Mouse, Rat
Host:	Rabbit
Isotype:	IgG
Clonality:	Polyclonal
Immunogen:	Fusion protein corresponding to a region derived from 563-832 amino acids of human pyruvate carboxylase
Formulation:	PBS pH7.3, 0.05% NaN ₃ , 50% glycerol
Purification:	Antigen affinity purification
Conjugation:	Unconjugated
Storage:	Store at -20°C as received.
Stability:	Stable for 12 months from date of receipt.
Predicted Protein Size:	130 kDa
Gene Name:	pyruvate carboxylase
Database Link:	NP_000911 Entrez Gene 25104 Rat Entrez Gene 18517 Mouse Entrez Gene 5091 Human P11498
Background:	This gene encodes pyruvate carboxylase; which requires biotin and ATP to catalyse the carboxylation of pyruvate to oxaloacetate. The active enzyme is a homotetramer arranged in a tetrahedron which is located exclusively in the mitochondrial matrix. Pyruvate carboxylase is involved in gluconeogenesis; lipogenesis; insulin secretion and synthesis of the neurotransmitter glutamate. Mutations in this gene have been associated with pyruvate carboxylase deficiency. Alternatively spliced transcript variants with different 5' UTRs; but encoding the same protein; have been found for this gene.
Synonyms:	PCB

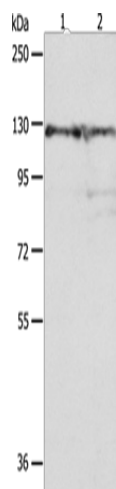


[View online »](#)

Protein Families: Druggable Genome

Protein Pathways: Citrate cycle (TCA cycle), Metabolic pathways, Pyruvate metabolism

Product images:



Gel: 8%SDS-PAGE
Lysate: 40 μ g
Lane 1-2: HeLa cells
human liver cancer tissue
Primary antibody: [TA321240] (PC Antibody) at
dilution 1/100
Secondary antibody: Goat anti rabbit IgG at
1/8000 dilution
Exposure time: 30 seconds