

## Product datasheet for **TA321240**

### PCB (PC) Rabbit Polyclonal Antibody

#### Product data:

Product Type:	Primary Antibodies
Applications:	WB
Recommended Dilution:	WB: 200-1000 WB positive control: Hela cells and human liver cancer tissue
Reactivity:	Human, Mouse, Rat
Host:	Rabbit
Isotype:	IgG
Clonality:	Polyclonal
Immunogen:	Fusion protein corresponding to a region derived from 563-832 amino acids of human pyruvate carboxylase
Formulation:	PBS pH7.3, 0.05% NaN <sub>3</sub> , 50% glycerol
Concentration:	lot specific
Purification:	Antigen affinity purification
Conjugation:	Unconjugated
Storage:	Store at -20°C as received.
Stability:	Stable for 12 months from date of receipt.
Predicted Protein Size:	130 kDa
Gene Name:	pyruvate carboxylase
Database Link:	<a href="#">NP_000911</a> <a href="#">Entrez Gene 25104 Rat</a> <a href="#">Entrez Gene 18517 Mouse</a> <a href="#">Entrez Gene 5091 Human</a> <a href="#">P11498</a>

**Background:** This gene encodes pyruvate carboxylase; which requires biotin and ATP to catalyse the carboxylation of pyruvate to oxaloacetate. The active enzyme is a homotetramer arranged in a tetrahedron which is located exclusively in the mitochondrial matrix. Pyruvate carboxylase is involved in gluconeogenesis; lipogenesis; insulin secretion and synthesis of the neurotransmitter glutamate. Mutations in this gene have been associated with pyruvate carboxylase deficiency. Alternatively spliced transcript variants with different 5' UTRs; but encoding the same protein; have been found for this gene.



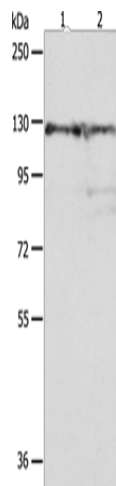
[View online »](#)

Synonyms: PCB

Protein Families: Druggable Genome

Protein Pathways: Citrate cycle (TCA cycle), Metabolic pathways, Pyruvate metabolism

### Product images:



Gel: 8%SDS-PAGE  
Lysate: 40 µg  
Lane 1-2: HeLa cells  
human liver cancer tissue  
Primary antibody: TA321240 (PC Antibody) at  
dilution 1/100  
Secondary antibody: Goat anti rabbit IgG at  
1/8000 dilution  
Exposure time: 30 seconds