

Product datasheet for **TA321235**

P4HB Rabbit Polyclonal Antibody

Product data:

Product Type:	Primary Antibodies
Applications:	WB
Recommended Dilution:	WB: 1:500-2000
Reactivity:	Human, Mouse, Rat
Host:	Rabbit
Isotype:	IgG
Clonality:	Polyclonal
Immunogen:	Fusion protein corresponding to C terminal 180 amino acids of human prolyl 4-hydroxylase, beta polypeptide
Formulation:	PBS pH7.3, 0.05% NaN ₃ , 50% glycerol
Concentration:	lot specific
Purification:	Antigen affinity purification
Conjugation:	Unconjugated
Storage:	Store at -20°C as received.
Stability:	Stable for 12 months from date of receipt.
Predicted Protein Size:	57 kDa
Gene Name:	prolyl 4-hydroxylase subunit beta
Database Link:	NP_000909 Entrez Gene 18453 MouseEntrez Gene 25506 RatEntrez Gene 5034 Human P07237

Background: During their synthesis, secretory proteins translocate into the endoplasmic reticulum (ER) where they are post-translationally modified and properly folded. To reach their native conformation, many secretory proteins require the formation of intra- or inter-molecular disulfide bonds. This process is called oxidative protein folding. Protein disulfide isomerase (PDI) catalyzes the formation and isomerization of these disulfide bonds. Studies on mechanisms of oxidative folding suggest that molecular oxygen oxidizes the ER-protein Ero1, which in turn oxidizes PDI through disulfide exchange. This event is then followed by PDI-catalyzed disulfide bond formation in folding proteins.

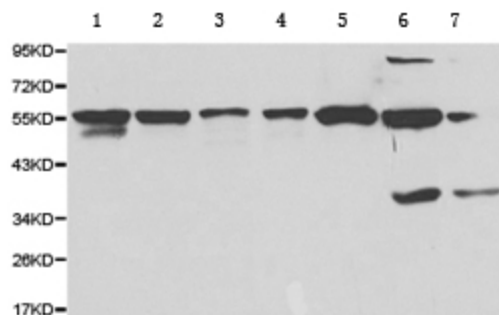


[View online »](#)

Synonyms: DSI; ERBA2L; GIT; P4Hbeta; PDI; PDIA1; PHDB; PO4DB; PO4HB; PROHB

Protein Families: Druggable Genome

Product images:



Predicted band size: 57 kDa. Positive control: THP-1, SW620, 6T-CEM, NIH3T3 and RAW264.7 cell; liver and kidney tissue lysate. Recommended dilution: 1/500-2000. (Gel: 10%SDS-PAGE Lane 1:THP-1 cell lysate Lane 2: SW620 cell lysate Lane 3:6T-CEM cell lysate Lane 4:NIH3T3 cell lysate Lane 5: RAW264.7 cell lysate Lane 6:Liver tissue lysate Lane 7:Kidney tissue lysate Lysates: 40 ug per lane Primary antibody: 1/500 dilution Secondary antibody: Goat anti Rabbit IgG - H&L (HRP) at 1/10000 dilution.