

Product datasheet for **TA321233**

NPY1R Rabbit Polyclonal Antibody

Product data:

Product Type:	Primary Antibodies
Applications:	IHC, WB
Recommended Dilution:	WB: 500-2000 WB positive control: Human fetal brain tissue lysate IHC: 25-100 Positive control: Human cervical cancer Predicted cell location: Cell membrane
Reactivity:	Human, Rat
Host:	Rabbit
Isotype:	IgG
Clonality:	Polyclonal
Immunogen:	Synthetic peptide corresponding to a region derived from 370-384 amino acids of Human neuropeptide Y receptor Y1
Formulation:	PBS pH7.3, 0.05% NaN ₃ , 50% glycerol
Concentration:	lot specific
Purification:	Antigen affinity purification
Conjugation:	Unconjugated
Storage:	Store at -20°C as received.
Stability:	Stable for 12 months from date of receipt.
Predicted Protein Size:	44 kDa
Gene Name:	neuropeptide Y receptor Y1
Database Link:	NP_000900 Entrez Gene 29358 Rat Entrez Gene 4886 Human P25929



[View online »](#)

Background:

Neuropeptide Y (NPY; MIM 162640) is one of the most abundant neuropeptides in the mammalian nervous system and exhibits a diverse range of important physiologic activities; including effects on psychomotor activity; food intake; regulation of central endocrine secretion; and potent vasoactive effects on the cardiovascular system. Two major subtypes of NPY (Y1 and Y2) have been defined by pharmacologic criteria. NPY receptors; such as NPY1R; have been identified in a variety of tissues; including brain; spleen; small intestine; kidney; testis; placenta; and aortic smooth muscle.

Synonyms:

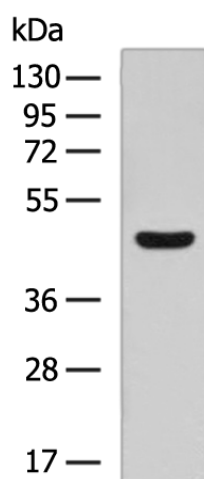
NPY1-R; NPYR

Protein Families:

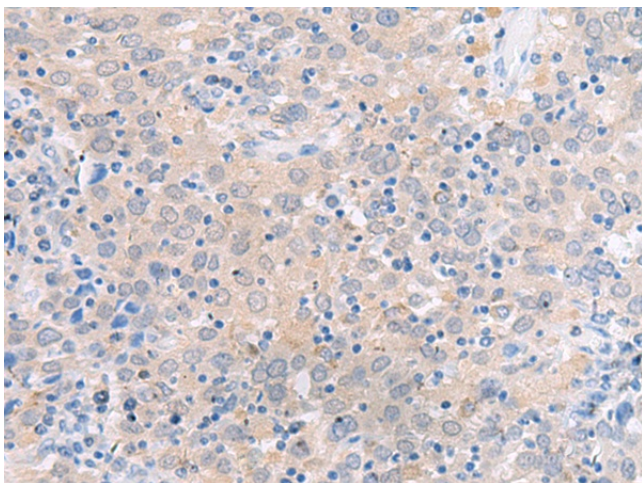
Druggable Genome, GPCR, Transmembrane

Protein Pathways:

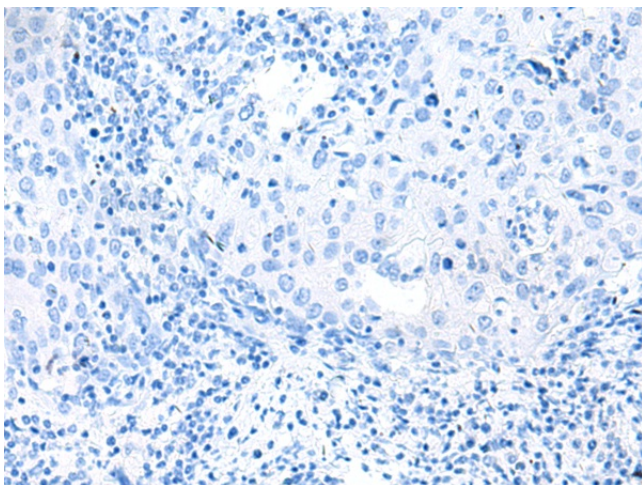
Neuroactive ligand-receptor interaction

Product images:

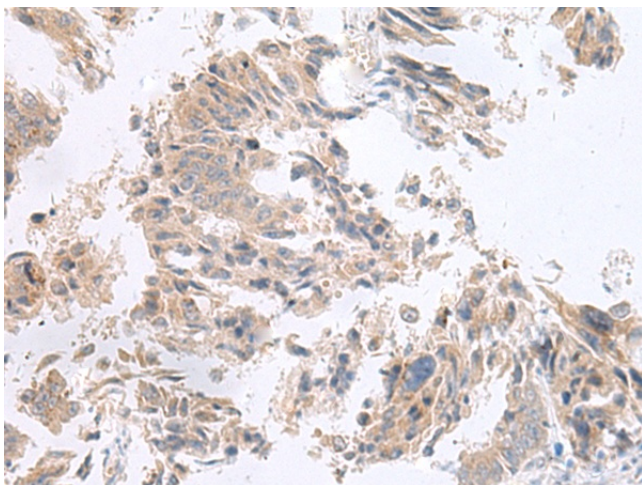
Gel: 8%SDS-PAGE
Lysate: 40 µg
Lane: Human fetal brain tissue lysate
Primary antibody: TA321233 (NPY1R Antibody) at dilution 1/200
Secondary antibody: Goat anti rabbit IgG at 1/8000 dilution
Exposure time: 1 minute



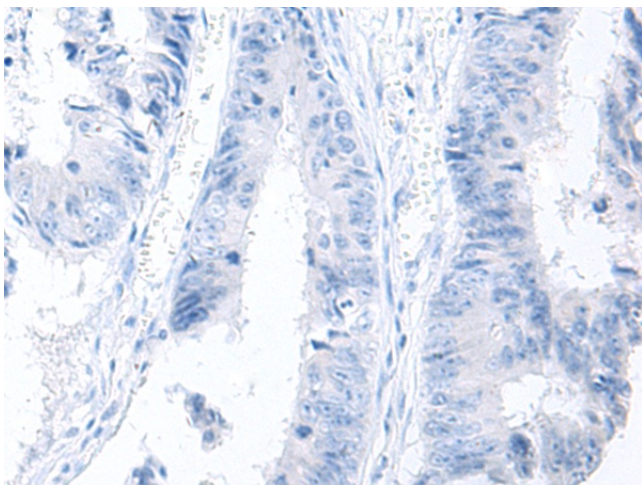
Immunohistochemistry of paraffin-embedded Human cervical cancer tissue using TA321233 (NPY1R Antibody) at dilution 1/20 (Original magnification: ×200)



Immunohistochemistry of paraffin-embedded Human cervical cancer tissue using TA321233 (NPY1R Antibody) at dilution 1/20, treated with synthetic peptide. (Original magnification: ×200)



Immunohistochemistry of paraffin-embedded Human colorectal cancer tissue using TA321233 (NPY1R Antibody) at dilution 1/20 (Original magnification: ×200)



Immunohistochemistry of paraffin-embedded Human colorectal cancer tissue using TA321233 (NPY1R Antibody) at dilution 1/20, treated with synthetic peptide. (Original magnification: ×200)