

## Product datasheet for **TA321232S**

### NPY1R Rabbit Polyclonal Antibody

#### Product data:

Product Type:	Primary Antibodies
Applications:	IHC, WB
Recommended Dilution:	WB: 500-2000 WB positive control: Mouse brain tissue and Human fetal brain tissue lysates IHC: 25-100 Positive control: Human cervical cancer Predicted cell location: Cell membrane
Reactivity:	Human, Mouse, Rat
Host:	Rabbit
Isotype:	IgG
Clonality:	Polyclonal
Immunogen:	Synthetic peptide corresponding to a region derived from 370-384 amino acids of Human neuropeptide Y receptor Y1
Formulation:	PBS pH7.3, 0.05% NaN <sub>3</sub> , 50% glycerol
Purification:	Antigen affinity purification
Conjugation:	Unconjugated
Storage:	Store at -20°C as received.
Stability:	Stable for 12 months from date of receipt.
Predicted Protein Size:	44 kDa
Gene Name:	neuropeptide Y receptor Y1
Database Link:	<a href="#">NP_000900</a> <a href="#">Entrez Gene 18166 Mouse</a> <a href="#">Entrez Gene 29358 Rat</a> <a href="#">Entrez Gene 4886 Human</a> <a href="#">P25929</a>



[View online »](#)

**Background:**

Neuropeptide Y (NPY; MIM 162640) is one of the most abundant neuropeptides in the mammalian nervous system and exhibits a diverse range of important physiologic activities, including effects on psychomotor activity, food intake, regulation of central endocrine secretion, and potent vasoactive effects on the cardiovascular system. Two major subtypes of NPY (Y1 and Y2) have been defined by pharmacologic criteria. NPY receptors, such as NPY1R, have been identified in a variety of tissues, including brain, spleen, small intestine, kidney, testis, placenta, and aortic smooth muscle

**Synonyms:**

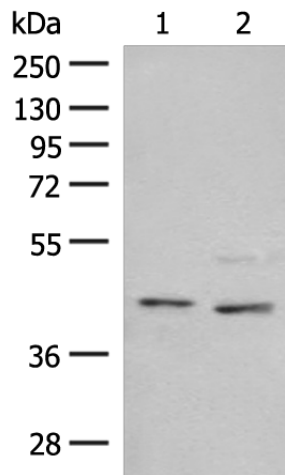
NPY1-R; NPYR

**Protein Families:**

Druggable Genome, GPCR, Transmembrane

**Protein Pathways:**

Neuroactive ligand-receptor interaction

**Product images:**

Gel: 8%SDS-PAGE

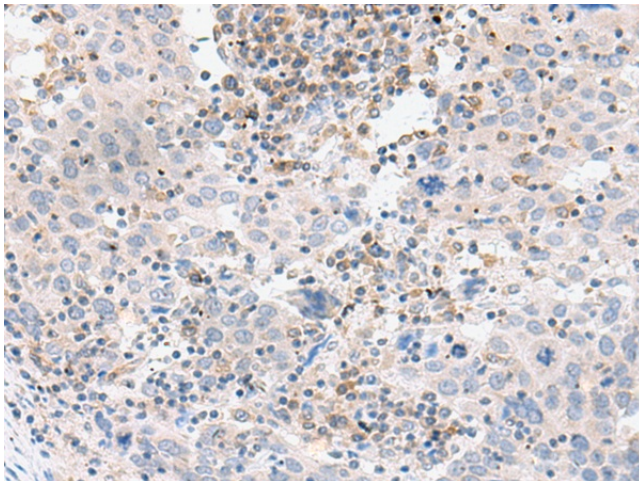
Lysate: 40 µg

Lane 1-2: Mouse brain tissue and Human fetal brain tissue lysates

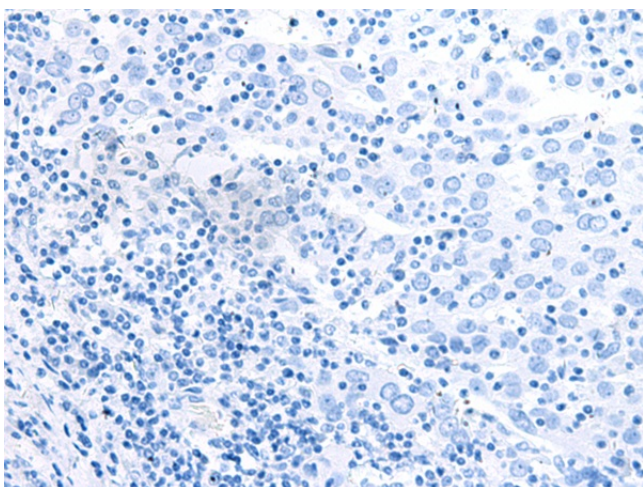
Primary antibody: [TA321232] (NPY1R Antibody) at dilution 1/300

Secondary antibody: Goat anti rabbit IgG at 1/8000 dilution

Exposure time: 1 minute



Immunohistochemistry of paraffin-embedded Human cervical cancer tissue using [TA321232] (NPY1R Antibody) at dilution 1/30 (Original magnification: ×200)



Immunohistochemistry of paraffin-embedded Human cervical cancer tissue using [TA321232] (NPY1R Antibody) at dilution 1/30, treated with synthetic peptide. (Original magnification: ×200)