

Product datasheet for **TA321231**

Neuropeptide Y (NPY) Rabbit Polyclonal Antibody

Product data:

Product Type:	Primary Antibodies
Applications:	WB
Recommended Dilution:	WB: 1000-5000 WB positive control: Mouse adrenal gland tissue lysate
Reactivity:	Human, Mouse, Rat
Host:	Rabbit
Isotype:	IgG
Clonality:	Polyclonal
Immunogen:	Full length fusion protein
Formulation:	PBS pH7.3, 0.05% NaN ₃ , 50% glycerol
Concentration:	lot specific
Purification:	Antigen affinity purification
Conjugation:	Unconjugated
Storage:	Store at -20°C as received.
Stability:	Stable for 12 months from date of receipt.
Predicted Protein Size:	11 kDa
Gene Name:	neuropeptide Y
Database Link:	NP_000896 Entrez Gene 24604 Rat Entrez Gene 109648 Mouse Entrez Gene 4852 Human P01303

Background: This gene encodes a neuropeptide that is widely expressed in the central nervous system and influences many physiological processes; including cortical excitability; stress response; food intake; circadian rhythms; and cardiovascular function. The neuropeptide functions through G protein-coupled receptors to inhibit adenylyl cyclase; activate mitogen-activated protein kinase (MAPK); regulate intracellular calcium levels; and activate potassium channels. A polymorphism in this gene resulting in a change of leucine 7 to proline in the signal peptide is associated with elevated cholesterol levels; higher alcohol consumption; and may be a risk factor for various metabolic and cardiovascular diseases.



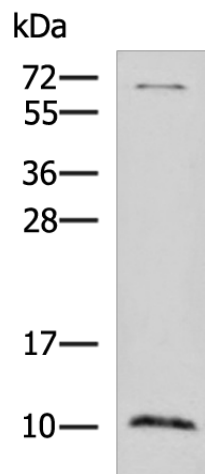
[View online »](#)

Synonyms: PYY4

Protein Families: Druggable Genome, Secreted Protein, Transmembrane

Protein Pathways: Adipocytokine signaling pathway

Product images:



Gel: 12%SDS-PAGE
Lysate: 40 μ g
Lane: Mouse adrenal gland tissue lysate
Primary antibody: TA321231 (NPY Antibody) at dilution 1/1150
Secondary antibody: Goat anti rabbit IgG at 1/5000 dilution
Exposure time: 30 seconds