

Product datasheet for **TA321228S**

CD10 (MME) Rabbit Polyclonal Antibody

Product data:

Product Type:	Primary Antibodies
Applications:	IHC, WB
Recommended Dilution:	WB: 500-2000 WB positive control: 293T cells IHC: 25-100 Positive control: Human colon cancer Predicted cell location: Cytoplasm
Reactivity:	Human, Mouse, Rat
Host:	Rabbit
Isotype:	IgG
Clonality:	Polyclonal
Immunogen:	Synthetic peptide peptide corresponding to a region derived from 519-533 amino acids of human membrane metallo-endopeptidase
Formulation:	PBS pH7.3, 0.05% NaN ₃ , 50% glycerol
Purification:	Antigen affinity purification
Conjugation:	Unconjugated
Storage:	Store at -20°C as received.
Stability:	Stable for 12 months from date of receipt.
Predicted Protein Size:	86 kDa
Gene Name:	membrane metallo-endopeptidase
Database Link:	NP_000893 Entrez Gene 17380 Mouse Entrez Gene 24590 Rat Entrez Gene 4311 Human P08473



[View online »](#)

Background:

This gene encodes a common acute lymphocytic leukemia antigen that is an important cell surface marker in the diagnosis of human acute lymphocytic leukemia (ALL). This protein is present on leukemic cells of pre-B phenotype; which represent 85% of cases of ALL. This protein is not restricted to leukemic cells; however; and is found on a variety of normal tissues. It is a glycoprotein that is particularly abundant in kidney; where it is present on the brush border of proximal tubules and on glomerular epithelium. The protein is a neutral endopeptidase that cleaves peptides at the amino side of hydrophobic residues and inactivates several peptide hormones including glucagon; enkephalins; substance P; neurotensin; oxytocin; and bradykinin. This gene; which encodes a 100-kD type II transmembrane glycoprotein; exists in a single copy of greater than 45 kb. The 5' untranslated region of this gene is alternatively spliced; resulting in four separate mRNA transcripts. The coding region is not affected by alternative splicing.?

Synonyms:

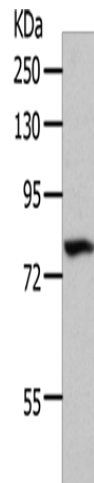
CALLA; CD10; CMT2T; NEP; SCA43; SFE

Protein Families:

Druggable Genome, Protease, Transmembrane

Protein Pathways:

Alzheimer's disease, Hematopoietic cell lineage, Renin-angiotensin system

Product images:

Gel: 8%SDS-PAGE

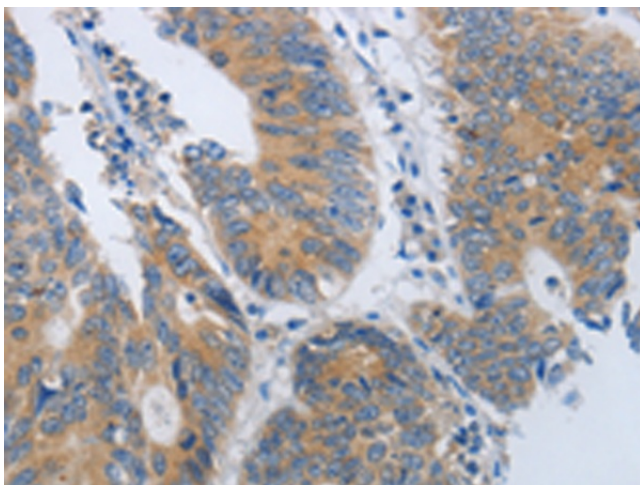
Lysate: 40 µg

Lane: 293T cells

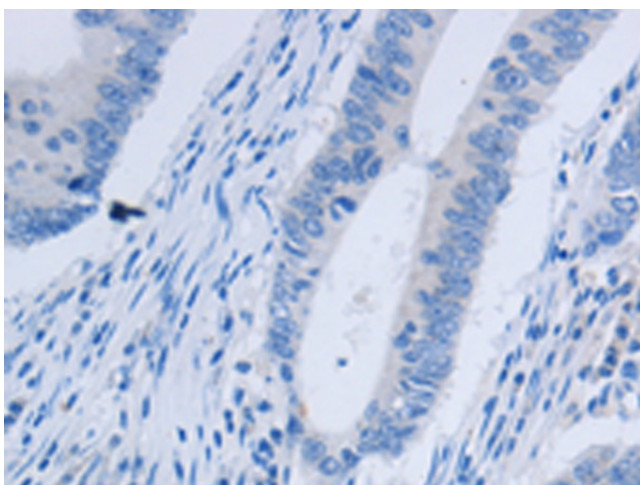
Primary antibody: [TA321228] (MME Antibody) at dilution 1/700

Secondary antibody: Goat anti rabbit IgG at 1/8000 dilution

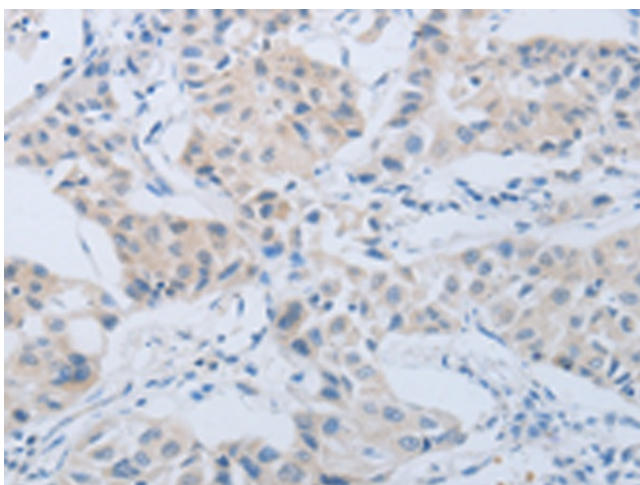
Exposure time: 1 minute



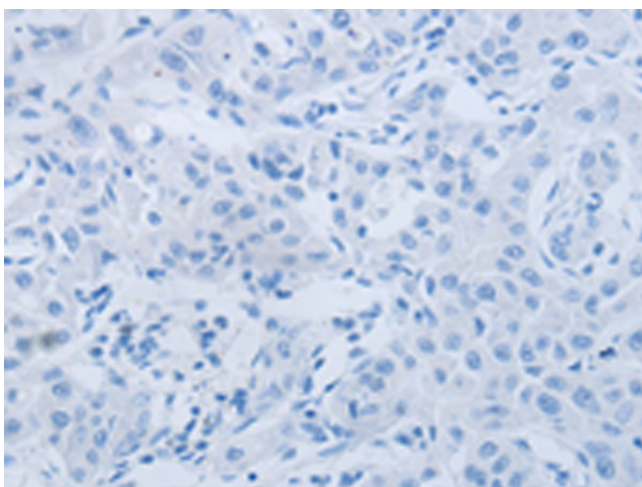
Immunohistochemistry of paraffin-embedded Human colon cancer tissue using [TA321228] (MME Antibody) at dilution 1/45 (Original magnification: $\times 200$)



Immunohistochemistry of paraffin-embedded Human colon cancer tissue using [TA321228] (MME Antibody) at dilution 1/45, treated with synthetic peptide. (Original magnification: $\times 200$)



Immunohistochemistry of paraffin-embedded Human lung cancer tissue using [TA321228] (MME Antibody) at dilution 1/45 (Original magnification: $\times 200$)



Immunohistochemistry of paraffin-embedded Human lung cancer tissue using [TA321228] (MME Antibody) at dilution 1/45, treated with synthetic peptide. (Original magnification: $\times 200$)