

## Product datasheet for **TA321221S**

### HTR2B Rabbit Polyclonal Antibody

#### Product data:

Product Type:	Primary Antibodies
Applications:	IHC
Recommended Dilution:	IHC: 100-300 Positive control: Human gastric cancer Predicted cell location: Cytoplasm
Reactivity:	Human
Host:	Rabbit
Isotype:	IgG
Clonality:	Polyclonal
Immunogen:	Fusion protein corresponding to a region derived from 1-58 amino acids of human 5-hydroxytryptamine receptor 2B
Formulation:	PBS pH7.3, 0.05% NaN <sub>3</sub> , 50% glycerol
Purification:	Antigen affinity purification
Conjugation:	Unconjugated
Storage:	Store at -20°C as received.
Stability:	Stable for 12 months from date of receipt.
Predicted Protein Size:	54 kDa
Gene Name:	5-hydroxytryptamine receptor 2B
Database Link:	<a href="#">NP_000858</a> <a href="#">Entrez Gene 3357 Human</a> <a href="#">P41595</a>



[View online »](#)

**Background:**

This gene encodes one of the several different receptors for 5-hydroxytryptamine (serotonin) that belongs to the G-protein coupled receptor 1 family. Serotonin is a biogenic hormone that functions as a neurotransmitter; a hormone; and a mitogen. Serotonin receptors mediate many of the central and peripheral physiologic functions of serotonin; including regulation of cardiovascular functions and impulsive behavior. Population and family-based analyses of a minor allele (glutamine-to-stop substitution; designated Q20\*) which blocks expression of this protein; and knockout studies in mice; suggest a role for this gene in impulsivity. However; other factors; such as elevated testosterone levels; may also be involved.

**Synonyms:**

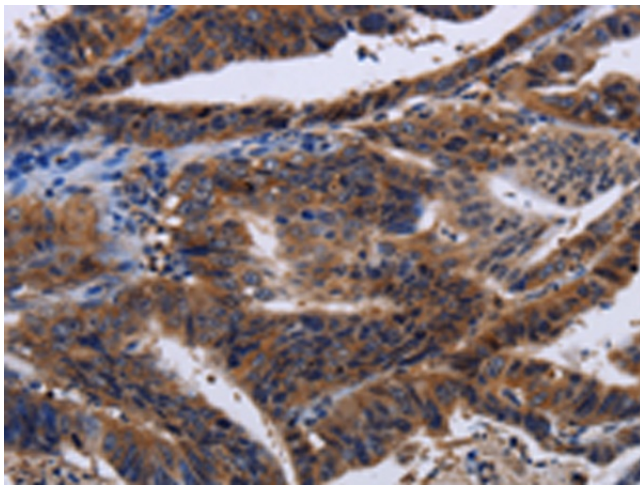
5-HT(2B); 5-HT2B

**Protein Families:**

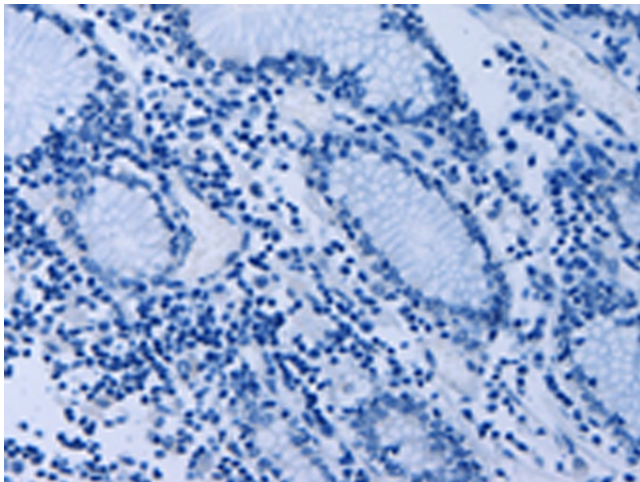
Druggable Genome, Transmembrane

**Protein Pathways:**

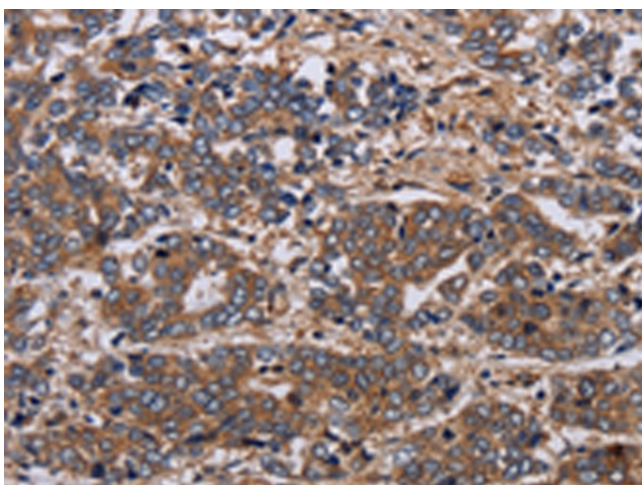
Calcium signaling pathway, Gap junction, Neuroactive ligand-receptor interaction

**Product images:**

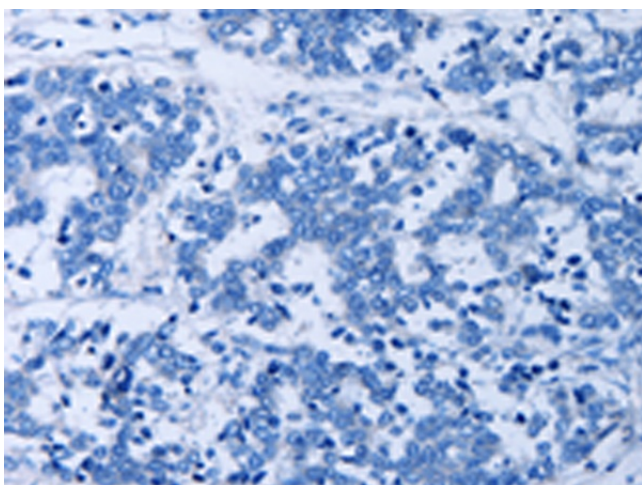
Immunohistochemistry of paraffin-embedded Human gastric cancer tissue using [TA321221] (HTR2B Antibody) at dilution 1/60 (Original magnification: x200)



Immunohistochemistry of paraffin-embedded Human gastric cancer tissue using [TA321221] (HTR2B Antibody) at dilution 1/60, treated with fusion protein. (Original magnification: x200)



Immunohistochemistry of paraffin-embedded Human liver cancer tissue using [TA321221] (HTR2B Antibody) at dilution 1/60 (Original magnification: ×200)



Immunohistochemistry of paraffin-embedded Human liver cancer tissue using [TA321221] (HTR2B Antibody) at dilution 1/60, treated with fusion protein. (Original magnification: ×200)