

Product datasheet for **TA321219**

IGF1 Receptor (IGF1R) Rabbit Polyclonal Antibody

Product data:

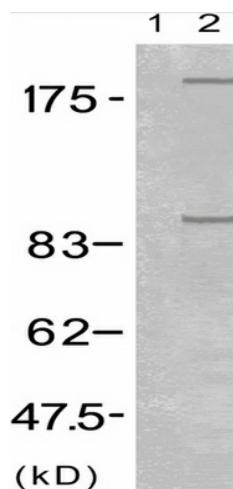
Product Type:	Primary Antibodies
Applications:	IF, WB
Recommended Dilution:	WB: 1:500-1000, IF: 1:100-200
Reactivity:	Human, Mouse, Rat
Modifications:	Phospho-specific
Host:	Rabbit
Isotype:	IgG
Clonality:	Polyclonal
Immunogen:	Peptide sequence around phosphorylation site of tyrosine 1165/tyrosine 1166 (T-D-Y(p)-Y(p)-R-K) derived from Human IGF-1R .
Formulation:	PBS pH7.3, 0.05% NaN ₃ , 50% glycerol
Concentration:	lot specific
Purification:	Antigen affinity purification
Conjugation:	Unconjugated
Storage:	Store at -20°C as received.
Stability:	Stable for 12 months from date of receipt.
Predicted Protein Size:	155 kDa
Gene Name:	insulin like growth factor 1 receptor
Database Link:	NP_000866 Entrez Gene 16001 Mouse Entrez Gene 25718 Rat Entrez Gene 3480 Human P08069
Background:	This receptor binds insulin-like growth factor 1 (IGF1) with a high affinity and IGF2 with a lower affinity. It has a tyrosine-protein kinase activity, which is necessary for the activation of the IGF1-stimulated downstream signaling cascade. When present in a hybrid receptor with INSR, binds IGF1.
Synonyms:	CD221; IGFI; IGFR; JTK13
Protein Families:	Druggable Genome, Protein Kinase, Transmembrane



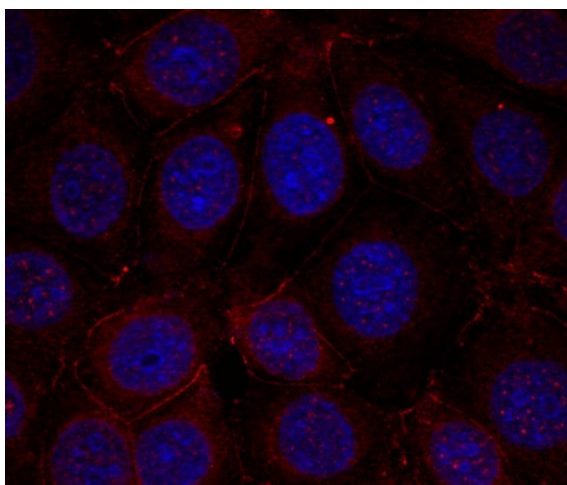
[View online »](#)

Protein Pathways: Adherens junction, Colorectal cancer, Endocytosis, Focal adhesion, Glioma, Long-term depression, Melanoma, Oocyte meiosis, Pathways in cancer, Progesterone-mediated oocyte maturation, Prostate cancer

Product images:



Predicted band size: 155 kDa. Positive control: 293 cells treated with insulin lysate. Recommended dilution: 1/ 500-1000. (Gel: 8%SDS-PAGE Lane 1: 293 cells untreated with insulin lysate Lane 2: 293 cells treated with insulin lysate Lysates: 30 ug per lane Primary antibody: 1/500 dilution Secondary antibody: Goat anti Rabbit IgG - H&L (HRP) at 1/10000 dilution Exposure time: 1 minute)



Predicted cell location: Cell membrane. Positive control: MCF cells. Recommended dilution: 1/ 100-200. The image is immunofluorescence of methanol-fixed MCF cells using IGF1R (Phospho-Tyr1165/Tyr1166) antibody at dilution 1/100. (Original magnification: ×200)