

## Product datasheet for **TA321205**

### **FKBP12 (FKBP1A) Rabbit Polyclonal Antibody**

#### **Product data:**

Product Type:	Primary Antibodies
Applications:	WB
Recommended Dilution:	WB: 1:500-2000
Reactivity:	Human, Mouse, Rat
Host:	Rabbit
Isotype:	IgG
Clonality:	Polyclonal
Immunogen:	Full length fusion protein
Formulation:	PBS pH7.3, 0.05% NaN <sub>3</sub> , 50% glycerol
Concentration:	lot specific
Purification:	Antigen affinity purification
Conjugation:	Unconjugated
Storage:	Store at -20°C as received.
Stability:	Stable for 12 months from date of receipt.
Predicted Protein Size:	12 kDa
Gene Name:	FK506 binding protein 1A
Database Link:	<a href="#">NP_000792</a> <a href="#">Entrez Gene 14225 Mouse</a> <a href="#">Entrez Gene 25639 Rat</a> <a href="#">Entrez Gene 2280 Human</a> <a href="#">P62942</a>



[View online »](#)

**Background:**

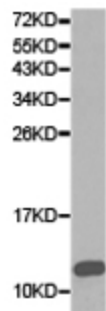
The protein encoded by this gene is a member of the immunophilin protein family, which play a role in immunoregulation and basic cellular processes involving protein folding and trafficking. The protein is a cis-trans prolyl isomerase that binds the immunosuppressants FK506 and rapamycin. It interacts with several intracellular signal transduction proteins including type I TGF-beta receptor. It also interacts with multiple intracellular calcium release channels, and coordinates multi-protein complex formation of the tetrameric skeletal muscle ryanodine receptor. In mouse, deletion of this homologous gene causes congenital heart disorder known as noncompaction of left ventricular myocardium. Multiple alternatively spliced variants, encoding the same protein, have been identified. The human genome contains five pseudogenes related to this gene, at least one of which is transcribed.

**Synonyms:**

FKBP-1A; FKBP-12; FKBP1; FKBP12; PKC12; PKC12; PPIASE

**Protein Families:**

Druggable Genome

**Product images:**

Predicted band size: 12 kDa. Positive control: Mouse cerebellum tissue lysate. Recommended dilution: 1/500-2000. (Gel: 12%SDS-PAGE Lysate: 40 ug Primary antibody: 1/500 dilution Secondary antibody: Goat anti Rabbit IgG - H&L (HRP) at 1/10000 dilution Exposure time: 1 minute)