

## Product datasheet for **TA321202**

### Dopamine Receptor D4 (DRD4) Rabbit Polyclonal Antibody

#### Product data:

Product Type:	Primary Antibodies
Applications:	IHC, WB
Recommended Dilution:	WB: 500-1000 WB positive control: Mouse skeletal muscle tissue IHC: 5-20 Positive control: Human cervical cancer Predicted cell location: Cytoplasm, Cell membrane
Reactivity:	Human, Mouse
Host:	Rabbit
Isotype:	IgG
Clonality:	Polyclonal
Immunogen:	Synthetic peptide corresponding to a region derived from 2-15 amino acids of Human Dopamine receptor D4
Formulation:	PBS pH7.3, 0.05% NaN <sub>3</sub> , 50% glycerol
Concentration:	lot specific
Purification:	Antigen affinity purification
Conjugation:	Unconjugated
Storage:	Store at -20°C as received.
Stability:	Stable for 12 months from date of receipt.
Predicted Protein Size:	48 kDa
Gene Name:	dopamine receptor D4
Database Link:	<a href="#">NP_000788</a> <a href="#">Entrez Gene 13491 Mouse</a> <a href="#">Entrez Gene 1815 Human</a> <a href="#">P21917</a>



[View online »](#)

**Background:**

This gene encodes the D4 subtype of the dopamine receptor. The D4 subtype is a G-protein coupled receptor which inhibits adenylyl cyclase. It is a target for drugs which treat schizophrenia and Parkinson disease. Mutations in this gene have been associated with various behavioral phenotypes; including autonomic nervous system dysfunction; attention deficit/hyperactivity disorder; and the personality trait of novelty seeking. This gene contains a polymorphic number (2-10 copies) of tandem 48 nt repeats; the sequence shown contains four repeats.

**Synonyms:**

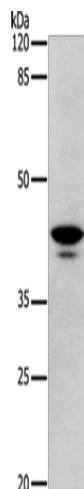
D4DR

**Protein Families:**

Druggable Genome, GPCR, Transmembrane

**Protein Pathways:**

Neuroactive ligand-receptor interaction

**Product images:**

Gel: 10%SDS-PAGE

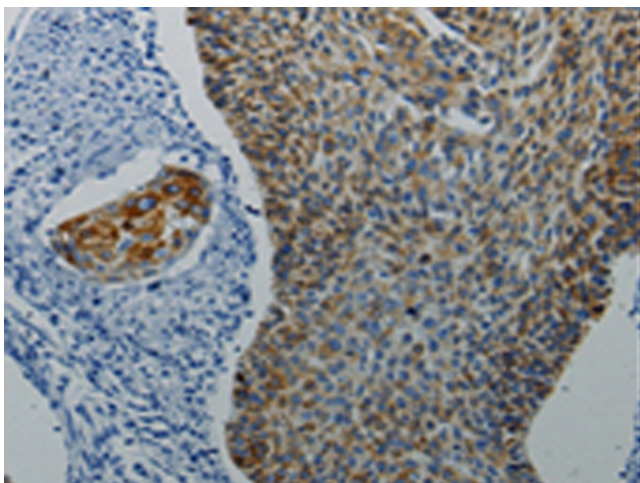
Lysate: 30 µg

Lane: Mouse skeletal muscle tissue

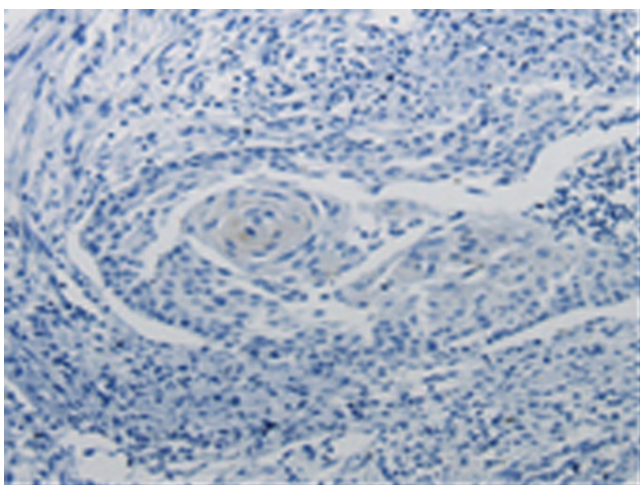
Primary antibody: TA321202 (DRD4 Antibody) at dilution 1/350

Secondary antibody: Goat anti rabbit IgG at 1/8000 dilution

Exposure time: 1 minute



Immunohistochemistry of paraffin-embedded Human cervical cancer tissue using TA321202 (DRD4 Antibody) at dilution 1/5 (Original magnification: ×200)



Immunohistochemistry of paraffin-embedded Human cervical cancer tissue using TA321202 (DRD4 Antibody) at dilution 1/5, treated with synthetic peptide. (Original magnification:  $\times 200$ )