

## Product datasheet for **TA321199**

### Dopamine Receptor D1 (DRD1) Rabbit Polyclonal Antibody

#### Product data:

Product Type:	Primary Antibodies
Applications:	IHC, WB
Recommended Dilution:	WB: 1000-5000 WB positive control: Hela cells IHC: 25-100 Positive control: Human thyroid cancer Predicted cell location: Cytoplasm
Reactivity:	Human
Host:	Rabbit
Isotype:	IgG
Clonality:	Polyclonal
Immunogen:	Synthetic peptide corresponding to a region derived from 10-23 amino acids of Human Dopamine receptor D1
Formulation:	PBS pH7.3, 0.05% NaN <sub>3</sub> , 50% glycerol
Concentration:	lot specific
Purification:	Antigen affinity purification
Conjugation:	Unconjugated
Storage:	Store at -20°C as received.
Stability:	Stable for 12 months from date of receipt.
Predicted Protein Size:	49 kDa
Gene Name:	dopamine receptor D1
Database Link:	<a href="#">NP_000785</a> <a href="#">Entrez Gene 1812 Human P21728</a>



[View online »](#)

**Background:**

This gene encodes the D1 subtype of the dopamine receptor. The D1 subtype is the most abundant dopamine receptor in the central nervous system. This G-protein coupled receptor stimulates adenylyl cyclase and activates cyclic AMP-dependent protein kinases. D1 receptors regulate neuronal growth and development; mediate some behavioral responses; and modulate dopamine receptor D2-mediated events. Alternate transcription initiation sites result in two transcript variants of this gene.

**Synonyms:**

DADR; DRD1A

**Protein Families:**

Druggable Genome, GPCR, Transmembrane

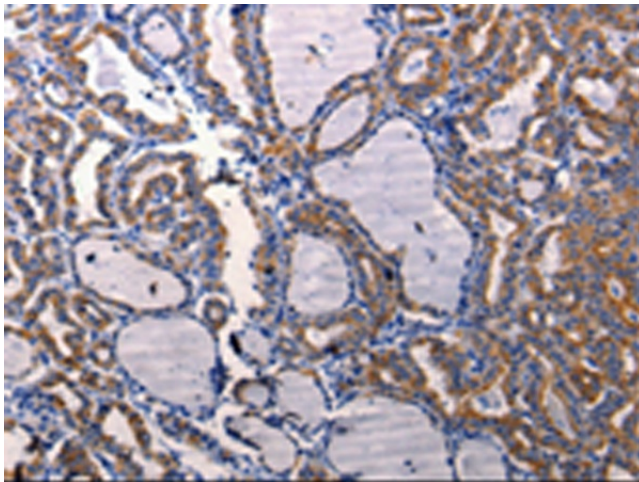
**Protein Pathways:**

Calcium signaling pathway, Gap junction, Neuroactive ligand-receptor interaction

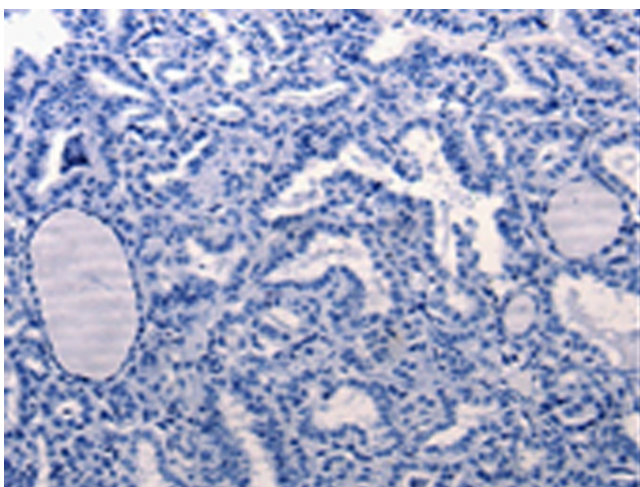
**Product images:**



Gel: 10%SDS-PAGE  
 Lysate: 30 µg  
 Lane: HeLa cells  
 Primary antibody: TA321199 (DRD1 Antibody) at dilution 1/1000  
 Secondary antibody: Goat anti rabbit IgG at 1/8000 dilution  
 Exposure time: 1 minute



Immunohistochemistry of paraffin-embedded Human thyroid cancer tissue using TA321199 (DRD1 Antibody) at dilution 1/50 (Original magnification: x200)



Immunohistochemistry of paraffin-embedded Human thyroid cancer tissue using TA321199 (DRD1 Antibody) at dilution 1/50, treated with synthetic peptide. (Original magnification: ×200)