

## Product datasheet for **TA321197**

### G CSF (CSF3) Rabbit Polyclonal Antibody

#### Product data:

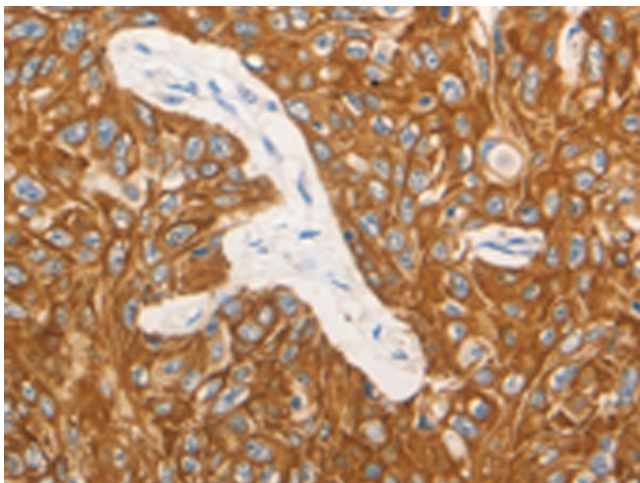
Product Type:	Primary Antibodies
Applications:	IHC
Recommended Dilution:	IHC: 15-50 Positive control: Human esophagus cancer Predicted cell location: Cytoplasm, Cell membrane
Reactivity:	Human
Host:	Rabbit
Isotype:	IgG
Clonality:	Polyclonal
Immunogen:	Synthetic peptide corresponding to a region derived from 50-64 amino acids of human colony stimulating factor 3 (granulocyte)
Formulation:	PBS pH7.3, 0.05% NaN <sub>3</sub> , 50% glycerol
Concentration:	lot specific
Purification:	Antigen affinity purification
Conjugation:	Unconjugated
Storage:	Store at -20°C as received.
Stability:	Stable for 12 months from date of receipt.
Gene Name:	colony stimulating factor 3
Database Link:	<a href="#">NP_000750</a> <a href="#">Entrez Gene 1440 Human</a> <a href="#">P09919</a>
Background:	The protein encoded by this gene is a cytokine that controls the production; differentiation; and function of granulocytes. The active protein is found extracellularly. Alternatively spliced transcript variants have been described for this gene.
Synonyms:	C17orf33; CSF3OS; GCSF
Protein Families:	Druggable Genome, ES Cell Differentiation/IPS, Secreted Protein



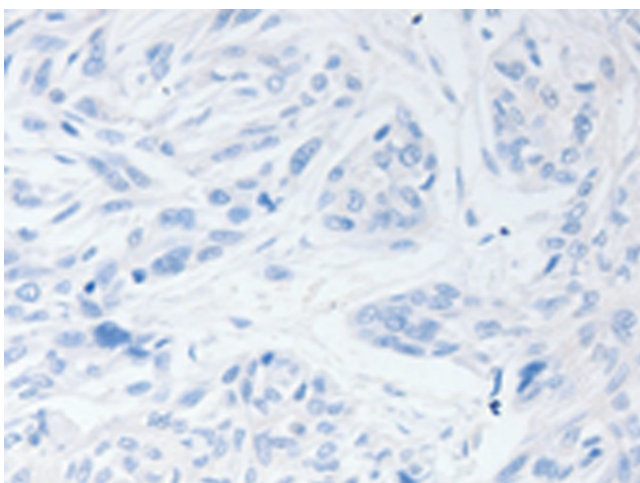
[View online »](#)

**Protein Pathways:** Cytokine-cytokine receptor interaction, Hematopoietic cell lineage, Jak-STAT signaling pathway

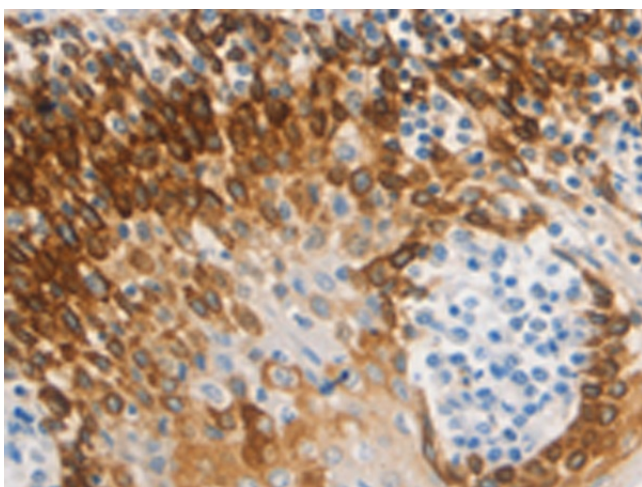
**Product images:**



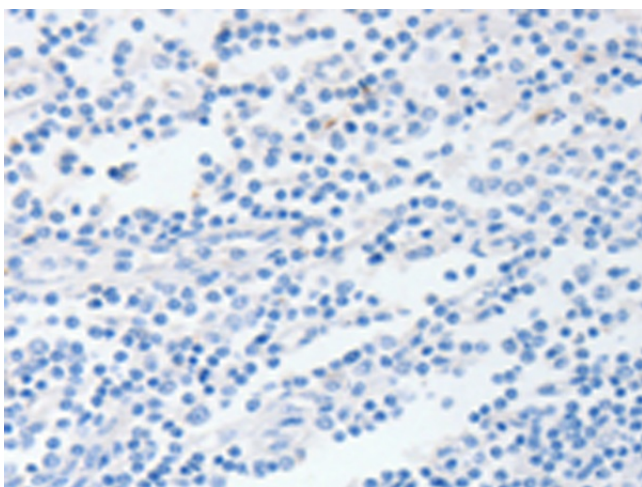
Immunohistochemistry of paraffin-embedded Human esophagus cancer tissue using TA321197 (CSF3 Antibody) at dilution 1/15 (Original magnification:  $\times 200$ )



Immunohistochemistry of paraffin-embedded Human esophagus cancer tissue using TA321197 (CSF3 Antibody) at dilution 1/15, treated with synthetic peptide. (Original magnification:  $\times 200$ )



Immunohistochemistry of paraffin-embedded Human tonsil tissue using TA321197 (CSF3 Antibody) at dilution 1/15 (Original magnification:  $\times 200$ )



Immunohistochemistry of paraffin-embedded Human tonsil tissue using TA321197 (CSF3 Antibody) at dilution 1/15, treated with synthetic peptide. (Original magnification:  $\times 200$ )