

## Product datasheet for **TA321194S**

### CHRNA3 Rabbit Polyclonal Antibody

#### Product data:

Product Type:	Primary Antibodies
Applications:	IHC, WB
Recommended Dilution:	WB: 1000-5000 WB positive control: Hela cells IHC: 15-50 Positive control: Human ovarian cancer Predicted cell location: Cytoplasm
Reactivity:	Human, Mouse, Rat
Host:	Rabbit
Isotype:	IgG
Clonality:	Polyclonal
Immunogen:	Synthetic peptide corresponding to a region derived from 69-83 amino acids of Human cholinergic receptor, nicotinic, alpha 3 (neuronal)
Formulation:	PBS pH7.3, 0.05% NaN <sub>3</sub> , 50% glycerol
Purification:	Antigen affinity purification
Conjugation:	Unconjugated
Storage:	Store at -20°C as received.
Stability:	Stable for 12 months from date of receipt.
Predicted Protein Size:	55 kDa
Gene Name:	cholinergic receptor nicotinic alpha 3 subunit
Database Link:	<a href="#">NP_000734</a> <a href="#">Entrez Gene 25101 Rat</a> <a href="#">Entrez Gene 110834 Mouse</a> <a href="#">Entrez Gene 1136 Human</a> <a href="#">P32297</a>



[View online »](#)

**Background:**

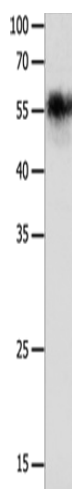
This locus encodes a member of the nicotinic acetylcholine receptor family of proteins. Members of this family of proteins form pentameric complexes comprised of both alpha and beta subunits. This locus encodes an alpha-type subunit; as it contains characteristic adjacent cysteine residues. The encoded protein is a ligand-gated ion channel that likely plays a role in neurotransmission. Polymorphisms in this gene have been associated with an increased risk of smoking initiation and an increased susceptibility to lung cancer. Alternatively spliced transcript variants have been described.

**Synonyms:**

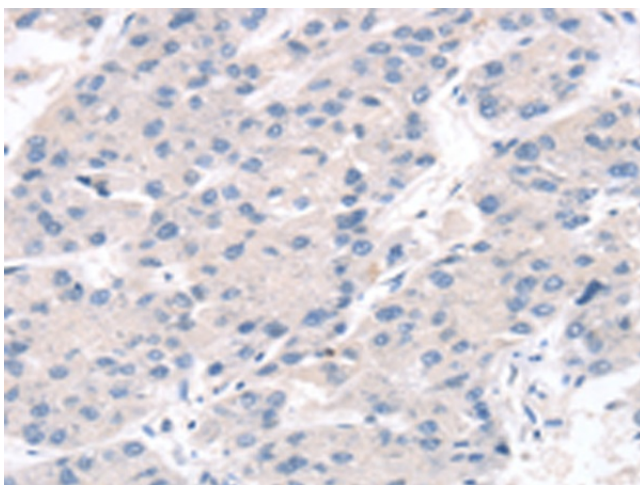
LNCR2; NACHRA3; PAOD2

**Protein Families:**

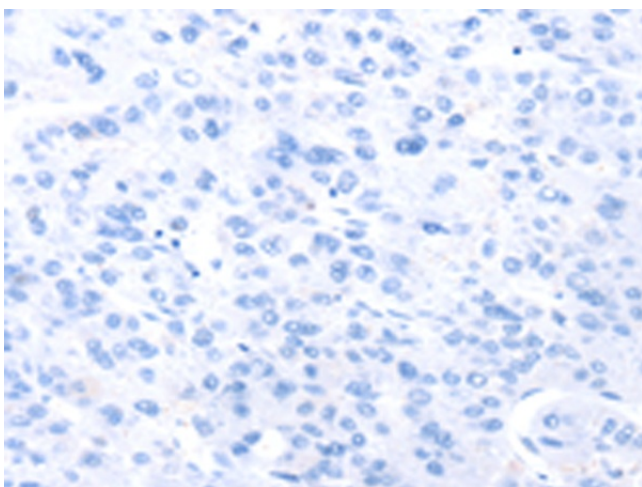
Druggable Genome, Ion Channels: Cys-loop Receptors, Transmembrane

**Product images:**

Gel: 10%SDS-PAGE  
Lysate: 40 µg  
Lane: HeLa cells  
Primary antibody: [TA321194] (CHRNA3 Antibody) at dilution 1/600  
Secondary antibody: Goat anti rabbit IgG at 1/8000 dilution  
Exposure time: 1 minute



Immunohistochemistry of paraffin-embedded Human ovarian cancer tissue using [TA321194] (CHRNA3 Antibody) at dilution 1/10 (Original magnification: ×200)



Immunohistochemistry of paraffin-embedded Human ovarian cancer tissue using [TA321194] (CHRNA3 Antibody) at dilution 1/10, treated with synthetic peptide. (Original magnification:  $\times 200$ )