

## Product datasheet for **TA321188S**

### SOD2 Rabbit Polyclonal Antibody

#### Product data:

Product Type:	Primary Antibodies
Applications:	WB
Recommended Dilution:	WB: 500-2000 WB positive control: Mouse liver tissue
Reactivity:	Human, Mouse, Rat
Host:	Rabbit
Isotype:	IgG
Clonality:	Polyclonal
Immunogen:	Fusion protein corresponding to a region derived from 25-222 amino acids of human superoxide dismutase 2, mitochondrial
Formulation:	PBS pH7.3, 0.05% NaN <sub>3</sub> , 50% glycerol
Purification:	Antigen affinity purification
Conjugation:	Unconjugated
Storage:	Store at -20°C as received.
Stability:	Stable for 12 months from date of receipt.
Predicted Protein Size:	25 kDa
Gene Name:	superoxide dismutase 2, mitochondrial
Database Link:	<a href="#">NP_000627</a> <a href="#">Entrez Gene 20656 Mouse</a> <a href="#">Entrez Gene 24787 Rat</a> <a href="#">Entrez Gene 6648 Human</a> <a href="#">P04179</a>
Background:	This gene is a member of the iron/manganese superoxide dismutase family. It encodes a mitochondrial protein that forms a homotetramer and binds one manganese ion per subunit. This protein binds to the superoxide byproducts of oxidative phosphorylation and converts them to hydrogen peroxide and diatomic oxygen. Mutations in this gene have been associated with idiopathic cardiomyopathy (IDC); premature aging; sporadic motor neuron disease; and cancer. Alternate transcriptional splice variants; encoding different isoforms; have been characterized.
Synonyms:	IPOB; MNSOD; MVCD6

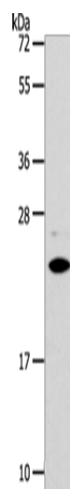


[View online »](#)

Protein Families: Druggable Genome, Transcription Factors

Protein Pathways: Huntington's disease

### Product images:



Gel: 12%SDS-PAGE  
Lysate: 40  $\mu$ g  
Lane: Mouse liver tissue  
Primary antibody: [TA321188] (SOD2 Antibody) at dilution 1/950  
Secondary antibody: Goat anti rabbit IgG at 1/8000 dilution  
Exposure time: 30 seconds