

Product datasheet for **TA321187**

5 Lipoxygenase (ALOX5) Rabbit Polyclonal Antibody

Product data:

Product Type:	Primary Antibodies
Applications:	IHC
Recommended Dilution:	IHC: 25-100 Positive control: Human lung cancer Predicted cell location: Cytoplasm
Reactivity:	Human, Mouse, Rat
Host:	Rabbit
Isotype:	IgG
Clonality:	Polyclonal
Immunogen:	Fusion protein corresponding to N terminal 359 amino acids of Human Arachidonate 5-lipoxygenase Arachidonate 5-lipoxygenase
Formulation:	PBS pH7.3, 0.05% NaN ₃ , 50% glycerol
Concentration:	lot specific
Purification:	Antigen affinity purification
Conjugation:	Unconjugated
Storage:	Store at -20°C as received.
Stability:	Stable for 12 months from date of receipt.
Gene Name:	arachidonate 5-lipoxygenase
Database Link:	NP_000689 Entrez Gene 11689 Mouse Entrez Gene 25290 Rat Entrez Gene 240 Human P09917



[View online »](#)

Background:

This gene encodes a member of the lipoxygenase gene family and plays a dual role in the synthesis of leukotrienes from arachidonic acid. The encoded protein; which is expressed specifically in bone marrow-derived cells; catalyzes the conversion of arachidonic acid to 5(S)-hydroperoxy-6-trans-8;11;14-cis-eicosatetraenoic acid; and further to the allylic epoxide 5(S)-trans-7;9-trans-11;14-cis-eicosatetraenoic acid (leukotriene A4). Leukotrienes are important mediators of a number of inflammatory and allergic conditions. Mutations in the promoter region of this gene lead to a diminished response to antileukotriene drugs used in the treatment of asthma and may also be associated with atherosclerosis and several cancers. Alternatively spliced transcript variants encoding different isoforms have been found for this gene.

Synonyms:

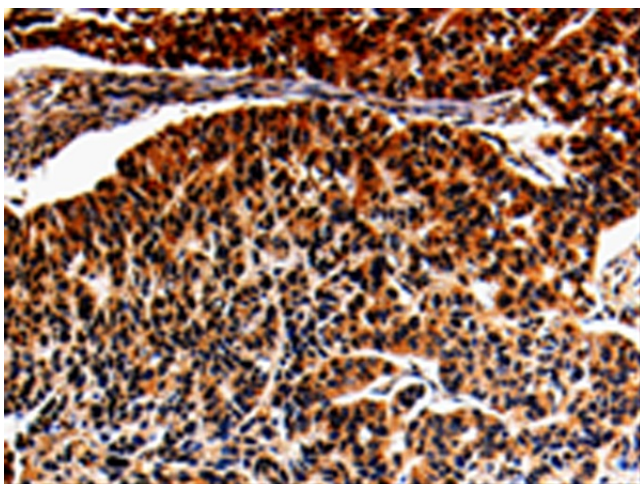
5-LO; 5-LOX; 5LPG; LOG5

Protein Families:

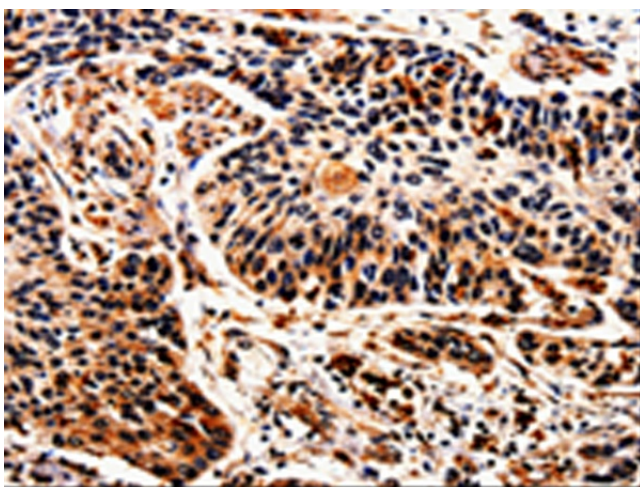
Druggable Genome

Protein Pathways:

Arachidonic acid metabolism, Metabolic pathways

Product images:

Immunohistochemistry of paraffin-embedded Human lung cancer tissue using TA321187 (ALOX5 Antibody) at dilution 1/25. (Original magnification: $\times 200$)



Immunohistochemistry of paraffin-embedded Human esophagus cancer tissue using TA321187 (ALOX5 Antibody) at dilution 1/25. (Original magnification: x200)