

## Product datasheet for **TA321183**

### ALDH1A1 Rabbit Polyclonal Antibody

#### Product data:

Product Type:	Primary Antibodies
Applications:	IHC, WB
Recommended Dilution:	WB: 500-2000 WB positive control: Mouse liver tissue IHC: 50-150 Positive control: Human liver cancer Predicted cell location: Cytoplasm
Reactivity:	Human, Mouse
Host:	Rabbit
Isotype:	IgG
Clonality:	Polyclonal
Immunogen:	Fusion protein corresponding to C terminal 290 amino acids of Human Aldehyde dehydrogenase 1 family, member A2
Formulation:	PBS pH7.3, 0.05% NaN <sub>3</sub> , 50% glycerol
Concentration:	lot specific
Purification:	Antigen affinity purification
Conjugation:	Unconjugated
Storage:	Store at -20°C as received.
Stability:	Stable for 12 months from date of receipt.
Predicted Protein Size:	57 kDa
Gene Name:	aldehyde dehydrogenase 1 family member A1
Database Link:	<a href="#">NP_000680</a> <a href="#">Entrez Gene 11668 Mouse</a> <a href="#">Entrez Gene 216 Human</a> <a href="#">P00352</a>



[View online »](#)

**Background:** This protein belongs to the aldehyde dehydrogenase family of proteins. The product of this gene is an enzyme that catalyzes the synthesis of retinoic acid (RA) from retinaldehyde. Retinoic acid, the active derivative of vitamin A (retinol), is a hormonal signaling molecule that functions in developing and adult tissues. The studies of a similar mouse gene suggest that this enzyme and the cytochrome CYP26A1, concurrently establish local embryonic retinoic acid levels which facilitate posterior organ development and prevent spina bifida. Four transcript variants encoding distinct isoforms have been identified for this gene.

**Synonyms:** ALDC; ALDH-E1; ALDH1; ALDH11; HEL-9; HEL-S-53e; HEL12; PUMB1; RALDH1

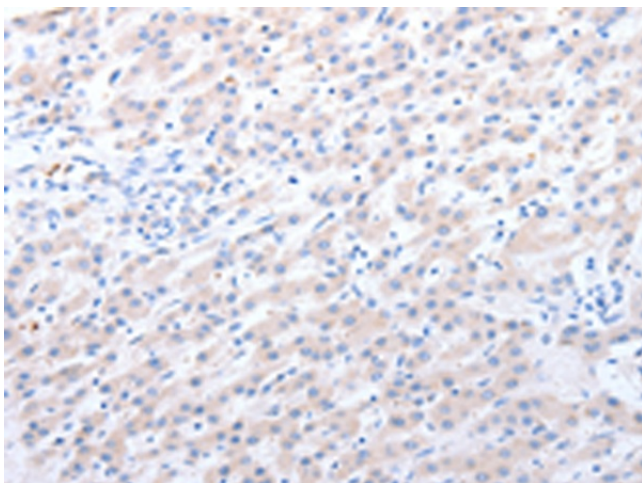
**Protein Families:** Druggable Genome, ES Cell Differentiation/IPS

**Protein Pathways:** Metabolic pathways, Retinol metabolism

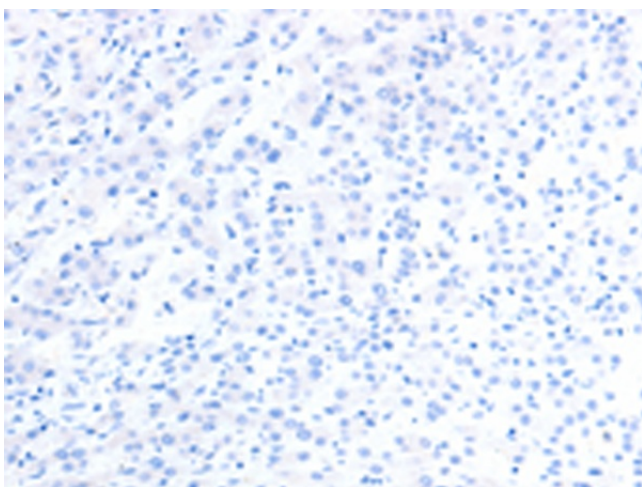
### Product images:



Gel: 10%SDS-PAGE  
Lysate: 30 µg  
Lane: Mouse liver tissue  
Primary antibody: TA321183  
(ALDH1A1/ALDH1A2/ALDH1A3 Antibody) at  
dilution 1/400  
Secondary antibody: Goat anti rabbit IgG at  
1/8000 dilution  
Exposure time: 30 seconds



Immunohistochemistry of paraffin-embedded  
Human liver cancer tissue using TA321183  
(ALDH1A1/ALDH1A2/ALDH1A3 Antibody) at  
dilution 1/40 (Original magnification: ×200)



Immunohistochemistry of paraffin-embedded Human liver cancer tissue using TA321183 (ALDH1A1/ALDH1A2/ALDH1A3 Antibody) at dilution 1/40, treated with fusion protein. (Original magnification:  $\times 200$ )