

Product datasheet for **TA321182**

ALDH1A1 Rabbit Polyclonal Antibody

Product data:

Product Type:	Primary Antibodies
Applications:	IHC, WB
Recommended Dilution:	WB: 500-1000 WB positive control: Human liver cancer tissue IHC: 20-50 Positive control: Human colon cancer Predicted cell location: Cytoplasm
Reactivity:	Human
Host:	Rabbit
Isotype:	IgG
Clonality:	Polyclonal
Immunogen:	Fusion protein corresponding to C terminal 290 amino acids of Human Aldehyde dehydrogenase 1 family, member A2
Formulation:	PBS pH7.3, 0.05% NaN ₃ , 50% glycerol
Concentration:	lot specific
Purification:	Antigen affinity purification
Conjugation:	Unconjugated
Storage:	Store at -20°C as received.
Stability:	Stable for 12 months from date of receipt.
Predicted Protein Size:	57 kDa
Gene Name:	aldehyde dehydrogenase 1 family member A1
Database Link:	NP_000680 Entrez Gene 216 Human P00352



[View online »](#)

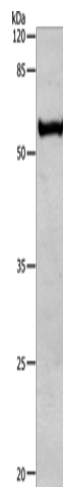
Background: This protein belongs to the aldehyde dehydrogenase family of proteins. The product of this gene is an enzyme that catalyzes the synthesis of retinoic acid (RA) from retinaldehyde. Retinoic acid, the active derivative of vitamin A (retinol), is a hormonal signaling molecule that functions in developing and adult tissues. The studies of a similar mouse gene suggest that this enzyme and the cytochrome CYP26A1, concurrently establish local embryonic retinoic acid levels which facilitate posterior organ development and prevent spina bifida. Four transcript variants encoding distinct isoforms have been identified for this gene.

Synonyms: ALDC; ALDH-E1; ALDH1; ALDH11; HEL-9; HEL-S-53e; HEL12; PUMB1; RALDH1

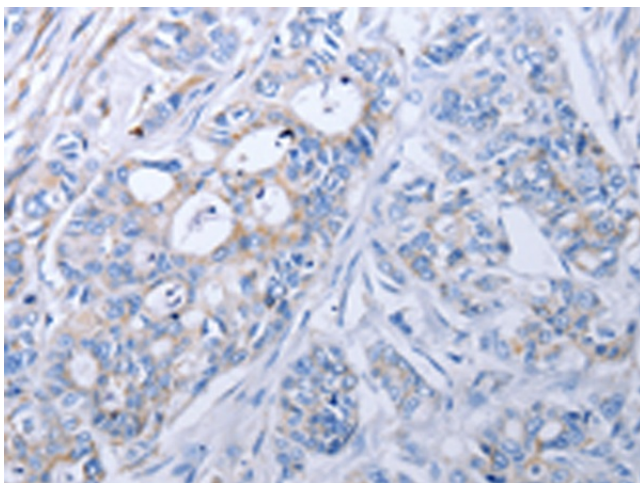
Protein Families: Druggable Genome, ES Cell Differentiation/IPS

Protein Pathways: Metabolic pathways, Retinol metabolism

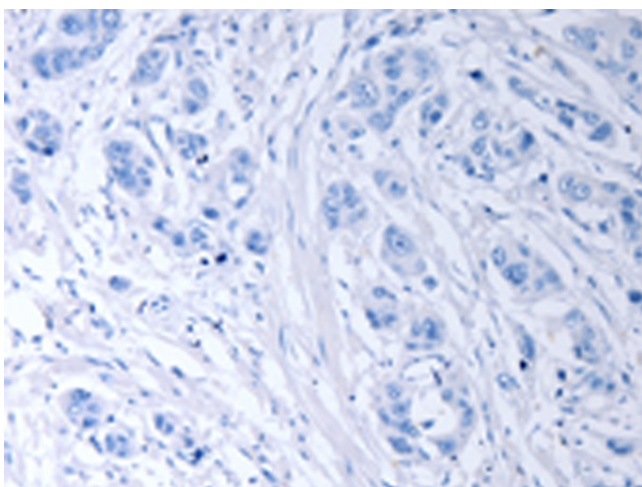
Product images:



Gel: 10%SDS-PAGE
Lysate: 30 μ g
Lane: Human liver cancer tissue
Primary antibody: TA321182
(ALDH1A1/ALDH1A2/ALDH1A3 Antibody) at
dilution 1/450
Secondary antibody: Goat anti rabbit IgG at
1/8000 dilution
Exposure time: 1 minute



Immunohistochemistry of paraffin-embedded
Human colon cancer tissue using TA321182
(ALDH1A1/ALDH1A2/ALDH1A3 Antibody) at
dilution 1/40 (Original magnification: \times 200)



Immunohistochemistry of paraffin-embedded Human colon cancer tissue using TA321182 (ALDH1A1/ALDH1A2/ALDH1A3 Antibody) at dilution 1/40, treated with fusion protein. (Original magnification: x200)